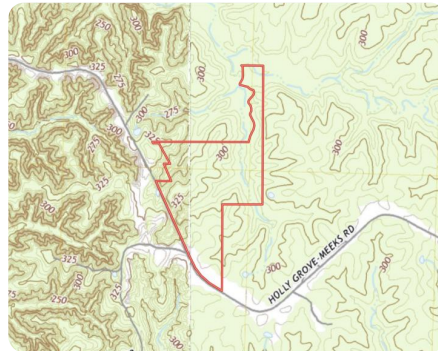




Perfect Affordable Holly Grove Tract

72 +/- Acres | Holmes County, MS | \$168,000



ADDRESS

8007 Holly Grove Meeks Rd
Cruger, MS 38924

LOCATION

From Cruger take Holly Grove Rd for approximately 4 miles the property is on your left.

PROPERTY SUMMARY

This is a great location just on the edge of where the hills meet the Mississippi Delta on the Northwest Corner of Holmes County. This tract is approximately 10 minutes from Morgan Brake Refuge and 20 minutes from Mathews Brake Refuge with the city of Greenwood only being a short 25-minute drive. This is a perfect father-and-son hunting tract offering you some nice food plots, dense timber, and cover to hold deer, turkeys, and other small game. The roads and plots are already in place. This tract has plenty of room to set up a camper and is priced right.

Take advantage of this affordable opportunity and call today!

nationalland.com/listing/perfect-affordable-holly-grove-tract



National Land Realty
18648 Hwy 18
Raymond, MS 39154
NationalLand.com



Greg Clearman
Office: 601-895-1956
Cell: 601-408-0019
Fax: 601-878-5424
Gclearman@NationalLand.com

The above information is from sources deemed reliable, however the accuracy is not guaranteed. National Land Realty assumes no liability for error, omissions or investment results.