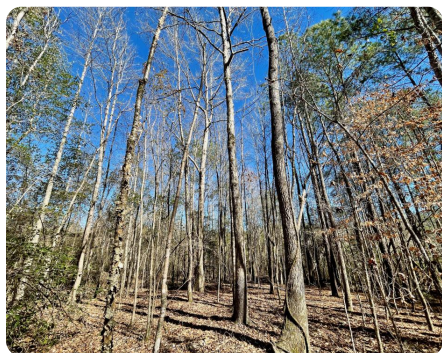


SOLD



Owens Cemetery Recreational & Hunting Tract

275 +/- Acres | Fayette County, AL



ADDRESS

0 Owens Rd
Fayette, AL 35555

LOCATION

Contact listing agent for directions.

PROPERTY SUMMARY

The Owens Cemetery Tract is located south of Fayette, Alabama, and features relatively mild, rolling topography, productive timber soils, and excellent turkey, deer, and upland hunting opportunities.

The tract enjoys public road frontage on both Owens Road and Owens Cutoff Road with power available nearby. The secluded location with public road access is ideal for hunting and other recreational activities. Owens Road cuts the property into 105 +/- and 170 +/- acre sections, respectively. Each of the two sections has a large creek bottom that runs the length of the land that provides a vital water source and forms a corridor in which wild game concentrates.

The property is comprised of natural regeneration mixed timber that offers diversity both for wildlife and future timber sales. There are approximately 70 acres of hardwood-dominant mixed timber along the network of creeks transecting the tract.

nationalland.com/listing/owens-cemetery-recreational-hunting-tract



National Land Realty
9 N. Conception St.
Mobile, AL 36602
NationalLand.com



Mitchell Jones
Office: 205-551-8982
Cell: 205-529-5500
Fax: 888-672-1810
Mjones@NationalLand.com

The above information is from sources deemed reliable, however the accuracy is not guaranteed.
National Land Realty assumes no liability for error, omissions or investment results.