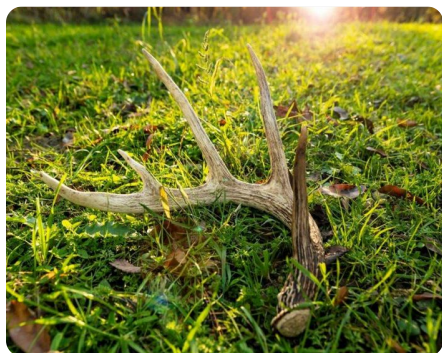


SOLD



Drakes Bayou

1,140 +/- Acres | Claiborne County, MS



ADDRESS

01 Shiloh Rd
Port Gibson, MS 39150

LOCATION

From HWY 61 and Shiloh Rd
intersect, Take Shiloh Rd for 1.5 Miles

Property is on your right

PROPERTY SUMMARY

Drakes Bayou is a one of kind sportsman paradise offering a 1140+/- acre game rich sanctuary with world class whitetails, waterfowl and a healthy population of turkeys.

This tract features 23 large food plots, shooting houses, extensive road system, large mature hardwood bottoms and some select cut areas to enhance the habitat for wildlife. It is diversified by having approximately 300 acres in hills and 700+/- acres in bottomland along the famous Big Black River.

You will enjoy a private gated entrance with a long private driveway assuring privacy and tranquility. The 4 BR/2 BA camp is in great condition with full kitchen, laundry room and large front and back dry canopies.

It also includes a nice game cleaning area and a dry storage building. The camp is on community water and power with plenty of room to build your dream lodge.

Drakes Bayou is a premier property with neighbors that take great pride in growing trophy bucks. Call today to schedule your showing.

nationalland.com/listing/drakes-bayou



National Land Realty
18648 Hwy 18
Raymond, MS 39154
NationalLand.com



Greg Clearman
Office: 601-895-1956
Cell: 601-408-0019
Fax: 601-878-5424
Gclearman@NationalLand.com

The above information is from sources deemed reliable, however the accuracy is not guaranteed.
National Land Realty assumes no liability for error, omissions or investment results.