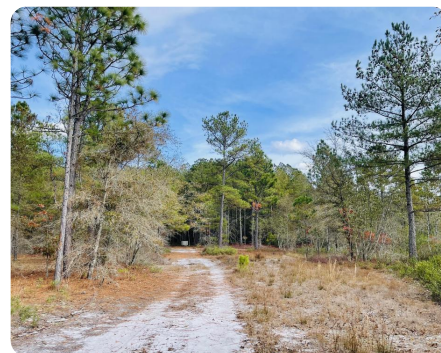
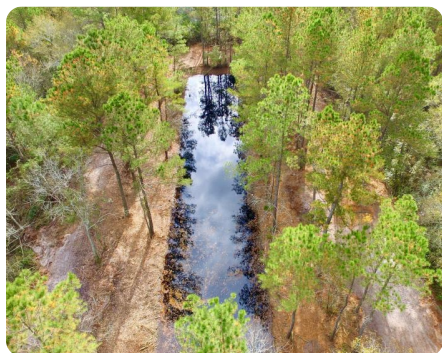


**SOLD**



## Braxton Pond Hunting and Timber Land

123 +/- Acres | Bladen County, NC



### ADDRESS

Braxton Edge Rd  
Ammon, NC 28441

### LOCATION

Located at the end of Braxton Edge Rd

### PROPERTY SUMMARY

Just 25 minutes from Fayetteville and 20 minutes from Elizabethtown, Braxton Pond offers over 123 acres ideal for the sportsman or someone looking to have a place in the country. The last property on a dead end road offers privacy and easy access to the property. There are mature plantation pines, a freshwater pond, shooting lanes, food plots, and box stands already in place. Also already in place is 3.5+/- miles of roads and trails throughout the property. This is the ideal turn key recreational property with turkey, whitetail deer, and the occasional bear! Call Cailein to set up your private showing.

[nationalland.com/listing/braxton-pond-hunting-and-timber-land](https://nationalland.com/listing/braxton-pond-hunting-and-timber-land)



**National Land Realty**  
2220 Peanut Plant Road  
Elizabethtown, NC 28337  
[NationalLand.com](https://NationalLand.com)



**Cailein Campbell**  
Office: 828-622-4794  
Cell: 828-460-4049  
Fax: 864-331-1610  
[Ccampbell@nationalland.com](mailto:Ccampbell@nationalland.com)

The above information is from sources deemed reliable, however the accuracy is not guaranteed.  
National Land Realty assumes no liability for error, omissions or investment results.