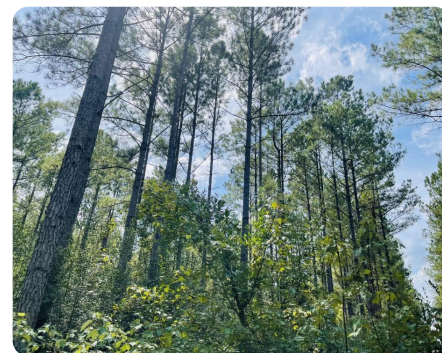
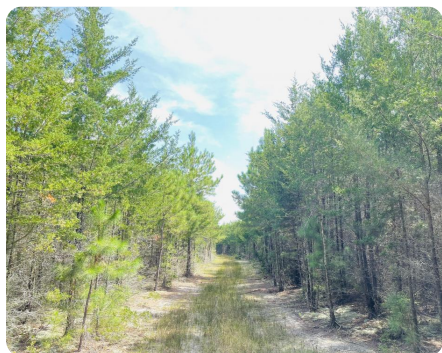


SOLD



Turnbull Plantation.

149 +/- Acres | Bladen County, NC



ADDRESS

0 Braxton Edge Road
Fayetteville, NC 28312

LOCATION

Contact Agent

PROPERTY SUMMARY

Offering Turnbull Plantation- a 150+/- acre tract with abundant wildlife perfect for the recreational buyer. Deer hunt, turkey hunt! There are approximately 40 acres of timber that has been cut on the property leaving it open and easily accessible. The remaining land is a mix of mature planted pine and hardwood mix. The Eastern portion of the property is a great natural wildlife area with hardwoods and thick areas for cover. In the back of the property you'll find a gorgeous stand of merchantable plantation pine ready for thinning or final harvest. There are newly rocked roads cut through offering a great recreational value. If you have considered investing in land AND being able to enjoy it, this is the one! Located only 30 minutes from Fayetteville and 1.5 hour from Wilmington/Wrightsville Beach.

nationalland.com/listing/turnbull-plantation-2



National Land Realty
2220 Peanut Plant Road
Elizabethtown, NC 28337
Nationalland.com



Cailein Campbell
Office: 828-622-4794
Cell: 828-460-4049
Fax: 864-331-1610
Ccampbell@nationalland.com

The above information is from sources deemed reliable, however the accuracy is not guaranteed. National Land Realty assumes no liability for error, omissions or investment results.