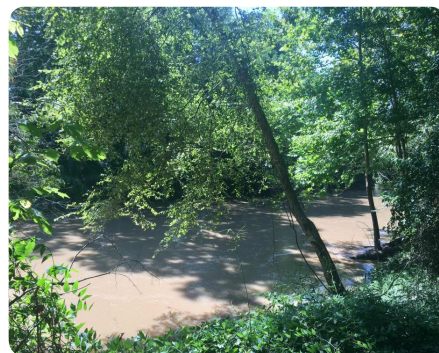


**SOLD**



## Strong River Getaway at Mays Bridge

3.4 +/- Acres | Simpson County, MS



### ADDRESS

000 Strong River Road  
Mendenhall, MS 39114

### LOCATION

Go North on Hwy 13 off Hwy 49, turn left onto Strong River road and property is on the right at the Strong River Bridge.

### PROPERTY SUMMARY

Strong River Hideaway is located at the old Mays Bridge and Mays swimming hole in Simpson County. Take advantage of access to the Strong River with paved road frontage on Strong River road just minutes from Mendenhall, MS. Imagine building your own dream cabin on the banks of the Strong River surrounded by hardwood timber. Countless hours of fishing, campfires, and family fun await on this river property!

Matt Anderson 601-408-5155

[nationalland.com/listing/strong-river-getaway-at-mays-bridge](https://nationalland.com/listing/strong-river-getaway-at-mays-bridge)



**National Land Realty**  
11 Willow Bend Drive  
Hattiesburg, MS 39402  
[NationalLand.com](https://NationalLand.com)



**Matt Anderson**  
Office: 601-803-7145  
Cell: 601-408-5155  
Fax: 601-544-4401  
[mattanderson@nationalland.com](mailto:mattanderson@nationalland.com)

The above information is from sources deemed reliable, however the accuracy is not guaranteed.  
National Land Realty assumes no liability for error, omissions or investment results.