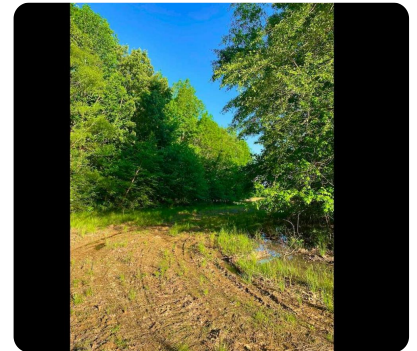


SOLD



Looxahoma Investment Property

60 +/- Acres | Tate County, MS



ADDRESS

--Looxahoma Circle
Looxahoma, MS 38668

LOCATION

From I-55 head North to the Senatobia exit. Take a right on Highway 4 E. Turn Left onto Looxahoma Circle. Look for sign on the right.

PROPERTY SUMMARY

Beautiful, 60+/- acres in Tate County, Mississippi. Complete with road frontage on Looxahoma Circle. This property is located south of Independence, MS and north of Looxahoma, and it is only a short drive to Interstate 55! This tract consists of some farmland with income and mixed hardwood making it diverse for wildlife. This is the perfect tract for hunting or to build your new home. There is also a property across Looxahoma Circle. Its listing number is 2062307. This property is priced to sell! Call Howard today for your private showing!

nationalland.com/listing/looxahoma-investment-property



National Land Realty
415 Lee Horn Drive
Suite 3
Houston, MS 38851
NationalLand.com



Howard Netterville
Office: 662-202-0884
Cell: 601-870-5922
Fax: 864-331-1610
hnetterville@nationalland.com

The above information is from sources deemed reliable, however the accuracy is not guaranteed. National Land Realty assumes no liability for error, omissions or investment results.