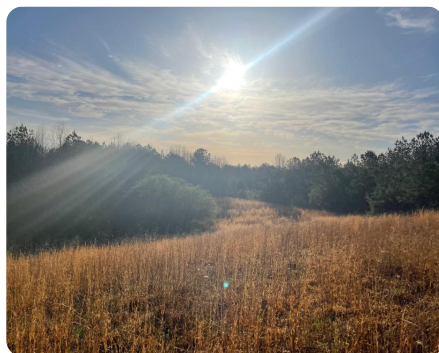


**SOLD**



## Squaw Creek Recreation/Hunting Tract

65 +/- Acres | Winston County, AL



### ADDRESS

0 County Road 29  
Double Springs, AL 35553

### LOCATION

From Double Springs  
Alabama, take 195 S for .3  
miles. Turn right onto CO RD  
25 for 6.6 miles, turn left onto  
Rocky Plains road. Travel 1.4  
miles; property will be on your  
left.

### PROPERTY SUMMARY

Blank slate recreational/hunting tract with flat to rolling terrain. Several food plots and good internal road system in place. Squaw creek is on the Eastern boundary providing water for wildlife year around. Private and surrounded by large tract owners, William Bankhead National forest and timber company. Deeded Access. Come and make this tract your own.

[nationalland.com/listing/double-springs-hunting-tract-65-acres](https://nationalland.com/listing/double-springs-hunting-tract-65-acres)



**National Land Realty**  
2633 Valleydale Rd.  
Suite 150  
Birmingham, AL 35244  
[Nationalland.com](https://Nationalland.com)



**Chris Padgett**  
Office: 855-384-5263  
Cell: 205-276-2446  
Fax: 864-331-1610  
[Cpadgett@nationalland.com](mailto:Cpadgett@nationalland.com)

The above information is from sources deemed reliable, however the accuracy is not guaranteed.  
National Land Realty assumes no liability for error, omissions or investment results.