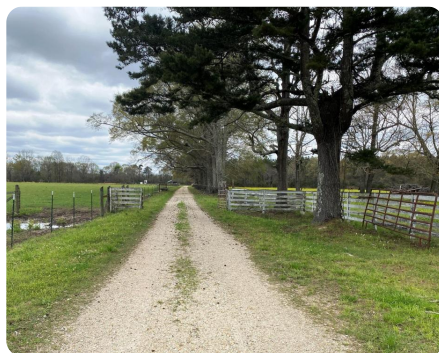
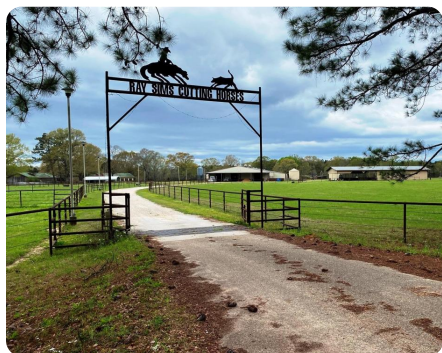


**SOLD**



## Sims Ranch on Leaf River

383 +/- Acres | Forrest County, MS



### ADDRESS

745 Old River Road  
Petal, MS 39465

### LOCATION

From South Hattiesburg (Hwy 98/Hwy 49 intersection) go 2.0 miles east on Hwy 98 to Northgate/Ralston Road and turn left on Ralston and go 0.8 miles to James St. and go through to become Sims Road, then go 1.8 miles to Old River Road, then right and go 0.8 miles to Ray Sims sign

### PROPERTY SUMMARY

This iconic 383-acre ranch has over a dozen barns and structures and presents 193 acres of timberland along 1 mile of Leaf River. The 190 acres of cattle ranch are fenced and cross-fenced with cattle work-up areas, with XL large barn/arena that once hosted equestrian events, sheds, hay barn, and equipment barns. As a bonus, there are entertainment venues on the ranch including an authentic saloon, pavilion, and hospitality center. There is even a skeet field with a clubhouse. The timberland consists of 108 acres of 25-30-year-old pines with 85 acres of bottomland hardwood and hardwood bays. The riverlands boast numerous sloughs for diverse wildlife habitats. Obviously, deer and turkey are abundant in the river bottom and diverse timber.

[nationalland.com/listing/sims-ranch-on-leaf-river](https://nationalland.com/listing/sims-ranch-on-leaf-river)



**National Land Realty**  
11 Willow Bend Drive  
Hattiesburg, MS 39402  
[NationalLand.com](https://NationalLand.com)



**Mark Anderson**  
Office: 601-891-5494  
Cell: 601-596-2207  
[manderson@nationalland.com](mailto:manderson@nationalland.com)

The above information is from sources deemed reliable, however the accuracy is not guaranteed.  
National Land Realty assumes no liability for error, omissions or investment results.