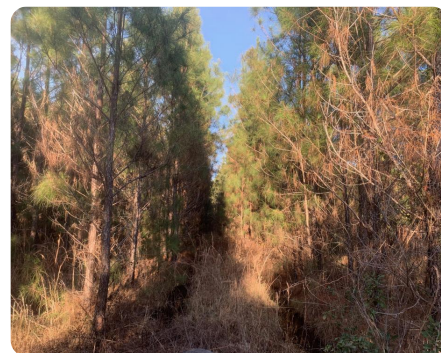
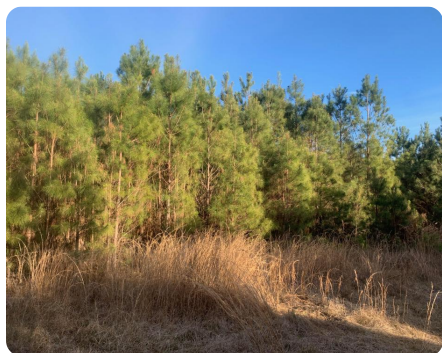


SOLD



South Sumter Timber Investment

20.5 +/- Acres | Sumter County, SC



ADDRESS

0 Bethel Church Road
Pinewood, SC 29125

LOCATION

PROPERTY SUMMARY

This 20 acre tract features frontage on Bethel Church Road, a county paved road, and is approximately ten miles southwest of the city of Sumter, and less than an hour from Columbia. The property is also extremely close to Manchester State Forest. The tract is predominately 7 year old loblolly pine and a small section of mixed hardwood. Other features include level topography and an access road into the property. Have a manageable recreational property, or invest in young growth timber; this tract allows you the opportunity to do it all. Schedule your tour today for the chance to experience country recreation at its best!

nationalland.com/listing/south-sumter-timber-investment



National Land Realty
1721 Saunders Street
Columbia, SC 29201
NationalLand.com



Tom Culclasure
Office: 855-384-5263
Cell: 843-327-6894
Fax: 864-331-1610
TomC@nationalland.com

The above information is from sources deemed reliable, however the accuracy is not guaranteed.
National Land Realty assumes no liability for error, omissions or investment results.