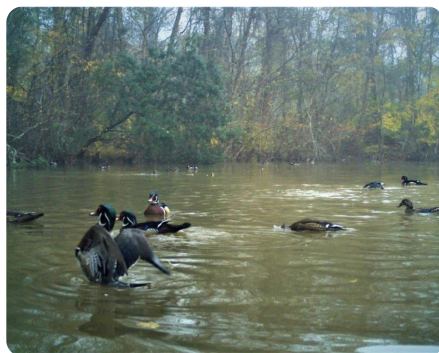


SOLD



Calebee Creek Tract

94.12 +/- Acres | Macon County, AL



ADDRESS

0 Davisville St
Tuskegee, AL 36083

LOCATION

Central East Alabama in South central Macon County. Located 9 miles South of Tuskegee. Fronting HWY 29. Convenient to Auburn, Montgomery, Troy, and Columbus, Georgia. Contact us for property location details.

PROPERTY SUMMARY

This hunting, recreation, timber, and real estate investment has frontage on Hwy 29 and Davisville St in Tuskegee, AL. The property consists of 71+/- acres of merchantable bottomland hardwoods, 12+/- acres of merchantable planted pines, 6+/- acres of open water duck ponds, 5+/- acres of established food plots, and numerous old creeks that meander through and hold ducks. Excellent duck, deer, turkey, and other small game hunting with shooting houses in place and internal roads to get to those perfect hunting areas. Great location only 35 minutes from Auburn, 50 minutes from Montgomery, 55 minutes from Troy, and 54 minutes from Columbus, Georgia. Call Jerry Joe Ingram at 334-300-4273 or Drew Nix at 334-782-8754 to schedule your private showing today!

nationalland.com/listing/calebee-creek-tract



National Land Realty
4267 Lomac Street
Montgomery, AL 36106
NationalLand.com

Jerry Joe Ingram, Jr.
Office: 334-300-4273
Cell: 334-300-4273
Fax: 864-331-1610
jingram@nationalland.com

Drew Nix
Office: 855-384-5263
Cell: 334-782-8754
Fax: 864-331-1610
Dnix@NationalLand.com

The above information is from sources deemed reliable, however the accuracy is not guaranteed.
National Land Realty assumes no liability for error, omissions or investment results.