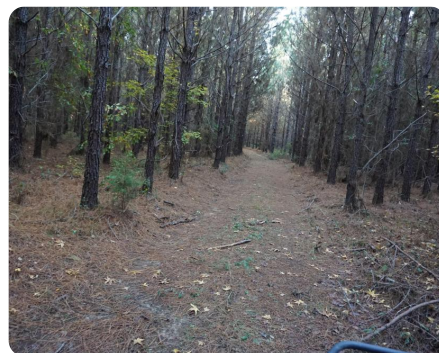
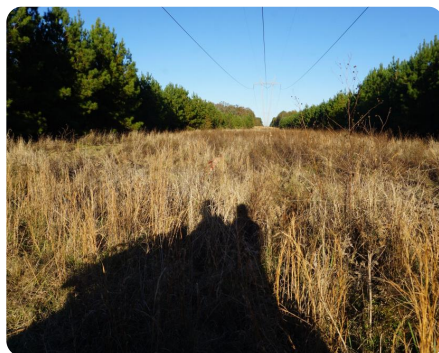


**SOLD**



## Kinterbish Creek Timber & Hunting Tract

400 +/- Acres | Sumter County, AL



### ADDRESS

0 Charles Spur Road  
Cuba, AL 36907

### LOCATION

Contact us for property  
location details.

### PROPERTY SUMMARY

This secluded timber and hunting property is located in the Kinterbish hunting area with over 6,000 ft of frontage on the Kinterbish Creek. The property features several ages of pine ranging from 8 to 19 yrs old. The tract has a good camp site and electricity and county water are available. Call Monroe Payne at 205-652-3333 for more information.

[nationalland.com/listing/kinterbish-creek-timber-hunting-tract](http://nationalland.com/listing/kinterbish-creek-timber-hunting-tract)



**National Land Realty**  
2809 8th Street  
Tuscaloosa, AL 35401  
[NationalLand.com](http://NationalLand.com)



**Monroe Payne**  
Office: 205-343-2110  
Cell: 205-652-3333  
Fax: 205-343-2144  
[Mpayne@nationalland.com](mailto:Mpayne@nationalland.com)

The above information is from sources deemed reliable, however the accuracy is not guaranteed.  
National Land Realty assumes no liability for error, omissions or investment results.