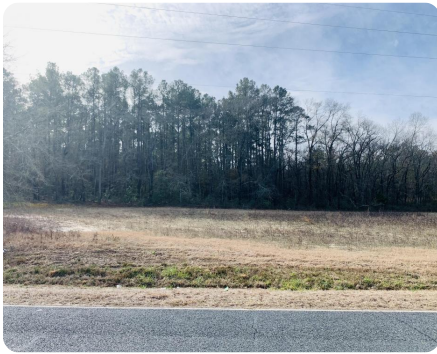


SOLD



## Log Cabin Lot 5

2 +/- Acres | Scotland County, NC



### ADDRESS

Log Cabin Road  
Laurinburg, NC 28352

### LOCATION

Contact Agent

### PROPERTY SUMMARY

Fronting on Log Cabin Road, this 2 acre lot is nestled on a quiet country road. There is power available and the land has been cleared making it build ready. There is additional land available if interested! Under 2 hours from Charlotte and Wilmington, just under 1 hour from Fayetteville! For more information, contact Cailein directly at email: [ccampbell@nationallandrealty.com](mailto:ccampbell@nationallandrealty.com) or phone: 910-338-9667!

[nationalland.com/listing/log-cabin-lot-5](https://nationalland.com/listing/log-cabin-lot-5)



National Land Realty  
2220 Peanut Plant Road  
Elizabethtown, NC 28337  
[NationalLand.com](https://NationalLand.com)



**Cailein Campbell**  
Office: 828-622-4794  
Cell: 828-460-4049  
Fax: 864-331-1610  
[Ccampbell@nationalland.com](mailto:Ccampbell@nationalland.com)

The above information is from sources deemed reliable, however the accuracy is not guaranteed. National Land Realty assumes no liability for error, omissions or investment results.