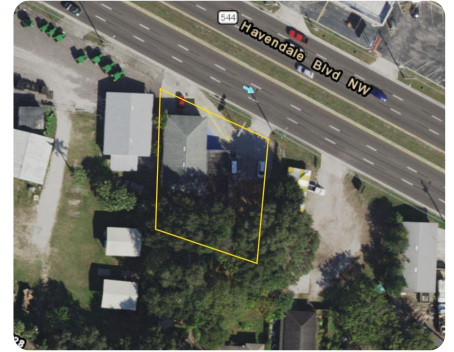


SOLD



Commercial Property on Havendale Blvd.

1. +/- Acres | Polk County, FL



ADDRESS

3112 Havendale Blvd.
Winter Haven, FL 33881

PROPERTY SUMMARY

FOR SALE-- Commercial property with 120 feet of frontage on busy Havendale Blvd. with daily traffic counts at 25,500 AADT. Property consists of two separate lots for a total of 0.3 acres. Most recently used for a day care but potential for various commercial uses and Future Land Use is Linear Commercial Corridor which allows for retail, office, medical office and some industrial uses as well. Building is 3,612 SF, concrete block and mostly clear span with 12' high ceilings. Currently 9 parking spaces but play yards could be opened up for more parking if needed.

nationalland.com/listing/commercial-income-property-on-havendale-blvd



National Land Realty
141 5th Street NW
Suite 202
Winter Haven, FL 33881
NationalLand.com



Erin Carden, CCIM
Office: 863-293-5600
Cell: 863-604-0564
Fax: 834-331-1610

The above information is from sources deemed reliable, however the accuracy is not guaranteed.
National Land Realty assumes no liability for error, omissions or investment results.