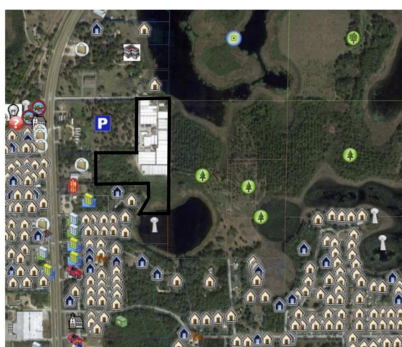


SOLD



Waterfront nursery – 160,000 sq. ft. greenhouses on 12.5 acres

11 +/- Acres | Lake County, FL



ADDRESS

16436 Whistling Pines Road
Umatilla, FL 32784-8158

PROPERTY SUMMARY

This 12.5 acre waterfront property includes 160,000 +/- sq. ft. of greenhouses, warehouses, potting sheds, etc. A 4+ acres heavily wooded vacant parcel is also included. This is one of three locations for the Whistling Pines nursery. Natural gas, wells, and three phase power are at the site.

nationalland.com/listing/waterfront-nursery-160000-sq-ft-greenhouses-on-11-acres



National Land Realty
339 W Alfred Street
Tavares, FL 32778
NationalLand.com



Richard Gonzalez, ALC, CCIM, MSC
Office: 352-408-3892
Cell: 352-408-3892

The above information is from sources deemed reliable, however the accuracy is not guaranteed.
National Land Realty assumes no liability for error, omissions or investment results.