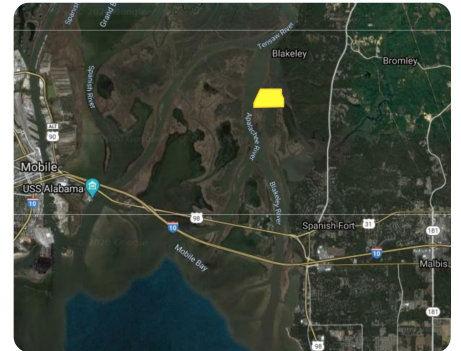


SOLD



The Apalachee River Bay Minette Basin Tract

223 +/- Acres | Baldwin County, AL



ADDRESS

0 Water Road
Spanish Fort, AL 36527

LOCATION

Contact us for property location details. PLEASE NOTE: PROPERTY IS ONLY ACCESSIBLE BY BOAT OR AIR.

PROPERTY SUMMARY

Hunt and fish across tens of thousands of acres right at your fingertips by utilizing this unique property. It's located in the Mobile-Tensaw River Delta on the Apalachee River just off Bay Minette Basin and the mouth of Mobile Bay, minutes from multiple boat ramps and water accessible restaurants of Spanish Fort, Highway 225, I-10, and the causeway. Build your hunting or fishing cabin and explore the Five Rivers and Mobile area area to your heart's desire or utilize the property for conservation use and tax shelter. Feasible divisions may be considered. Contact Clint Flowers, ALC at 855.NLR.LAND for more information.

nationalland.com/listing/the-apalachee-river-bay-minette-basin-tract



National Land Realty
9 N. Conception St.
Mobile, AL 36602
NationalLand.com



Clint Flowers, ALC
Office: 855-657-5263
Cell: 251-387-0787
cflowers@nationalland.com

The above information is from sources deemed reliable, however the accuracy is not guaranteed. National Land Realty assumes no liability for error, omissions or investment results.