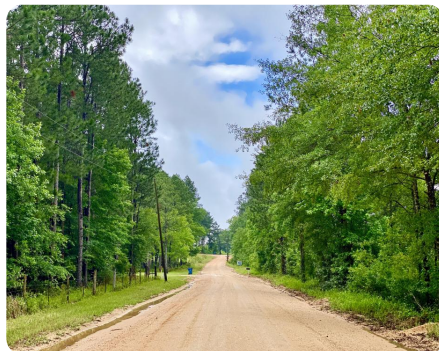


SOLD



Laton Hill Escatawpa River Tract

213 +/- Acres | Washington County, AL



ADDRESS

0 Jessie Williams Road
Millry, AL 36558

LOCATION

Contact us for property location details.

PROPERTY SUMMARY

This versatile and divisible hunting and timber investment near the quiet community of Laton Hill could also make a great home site or farm. Enjoy hunting the abundant deer, turkey, and other small game and road frontage with utilities. Conveniently located to the schools, shopping, and churches of Chatom, minutes from Highway 56, and only a short drive from Highway 45 and the Mississippi line. The headwaters of the Escatawpa River flow through the property, and there are several large potential fishing lake sites surrounded by scenic home or camp sites. Contact Clint Flowers, ALC at 855.NLR.LAND for more information.

nationalland.com/listing/laton-hill-escatawpa-river-tract



National Land Realty
9 N. Conception St.
Mobile, AL 36602
NationalLand.com



Clint Flowers, ALC
Office: 251-572-7366
Cell: 251-387-0787
cflowers@nationalland.com

The above information is from sources deemed reliable, however the accuracy is not guaranteed.
National Land Realty assumes no liability for error, omissions or investment results.