

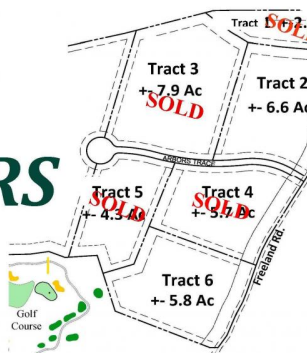
SOLD

# NATIONAL LAND REALTY®

## St. Francisville Rural Homesite Tract 2

6.61 +/- Acres | West Feliciana Parish, LA

### THE ARBORS



### ADDRESS

14848 Arbors Trace  
Saint Francisville, LA 70775

### LOCATION

From St. Francisville - Travel approximately 2 miles south on U.S Hwy 61 and turn left onto LA Hwy 965; travel 6.0 miles and turn right onto Freeland Rd; travel 0.6 miles and property is on the right (between the Fire Station and The Bluffs Golf Course)

### PROPERTY SUMMARY

The Arbors is a new, restricted residential subdivision that includes 6 estate-size, wooded tracts ranging in size from 4.3 to 7.9 acres. **Only 2 tracts remain.** Located minutes from St. Francisville and only 35 minutes from downtown Baton Rouge in beautiful, quiet West Feliciana Parish. Perfect place to build with nature as wildlife is plentiful and the scenery is gorgeous. Located adjacent to The Bluffs golf course and subdivision, however, **The Arbors is not included in The Bluffs POA.** The new Arbors Trace is a private asphalt road and underground utilities, natural gas and public water are available. The West Feliciana Parish school district is rated as one of the best public school districts in the state.

[nationalland.com/listing/st-francisville-rural-homesite-lot-2](http://nationalland.com/listing/st-francisville-rural-homesite-lot-2)

NATIONAL  
LAND  
REALTY®

National Land Realty  
37283 Swamp Road  
Unit 702  
Prairieville, LA 70769  
[NationalLand.com](http://NationalLand.com)



**Warren Peters**  
Office: 225-831-8513  
Cell: 225-938-9293  
Fax: 864-331-1610  
[Wpeters@nationalland.com](mailto:Wpeters@nationalland.com)

The above information is from sources deemed reliable, however the accuracy is not guaranteed. National Land Realty assumes no liability for error, omissions or investment results.