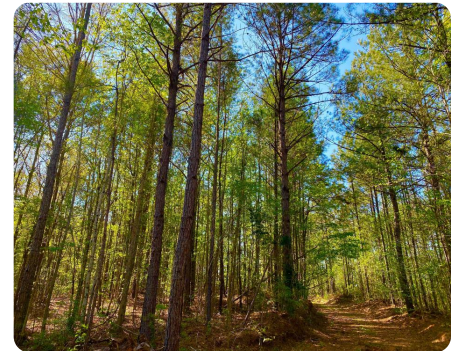
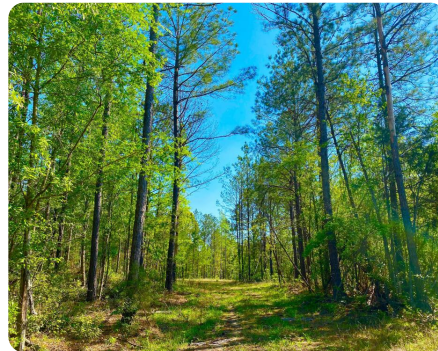
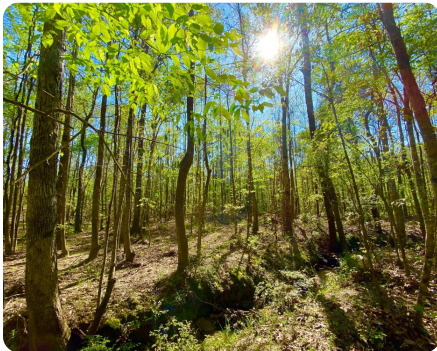


SOLD



# The Sweet Water Bashi Hunting & Timber Investment

131 +/- Acres | Marengo County, AL



## ADDRESS

0 Sumter Rodgers Road  
Sweet Water, AL 36782

## LOCATION

Contact us for property  
location details.

## PROPERTY SUMMARY

This diverse timber and hunting investment near Bashi, just a short drive from Highway 10 at Sweet Water and Highway 43 at Thomasville, has a lot to offer. Enjoy quick access off of a paved county road, power and water are available, and there are multiple nice potential camp and fishing lake sites. A beautiful creek runs through the property with a wide hardwood hammock running with it, there are multiple food plots, and this area is known for trophy deer and turkey hunting along with abundant dove and other small game. Timber consists of 49+/- acres of 2019 pine plantation and 81+/- acres of once thinned pine plantation and areas of mature hardwood. Tracts this size and quality aren't available often in this area. Contact Clint Flowers, ALC at 855.NLR.LAND for more information.

[nationalland.com/listing/the-sweet-water-bashi-hunting-timber-investment](https://nationalland.com/listing/the-sweet-water-bashi-hunting-timber-investment)



National Land Realty  
9 N. Conception St.  
Mobile, AL 36602  
[NationalLand.com](https://NationalLand.com)



Clint Flowers, ALC  
Office: 855-657-5263  
Cell: 251-387-0787  
[cflowers@nationalland.com](mailto:cflowers@nationalland.com)

The above information is from sources deemed reliable, however the accuracy is not guaranteed.  
National Land Realty assumes no liability for error, omissions or investment results.