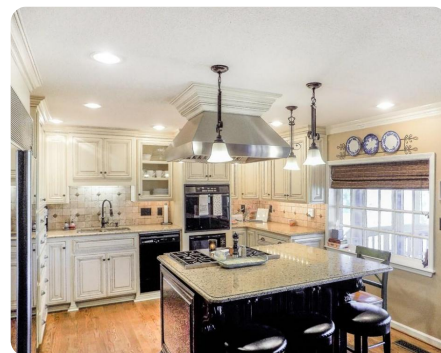


SOLD



Clayton Farm & Home

5 +/- Acres | Barbour County, AL



ADDRESS

3376 HWY 30
Clayton, AL 36016

LOCATION

Located near Boyd Bros
Trucking off of HWY 30 in
Clayton AL. Near Abercrombie
Fish Camp.

PROPERTY SUMMARY

This scenic farm in Clayton is a rare find: The custom home overlooks rolling pastures. It's 4BR/3 BA with a covered front porch & screened side porch, rich pecan trees, it has a large chef's kitchen, laundry/mudroom, den, formal dining room, and a large 2 car garage. The pasture is fenced/cross-fenced and has a small barn. A short drive from Lake Eufaula, famous for it's bass fishing. Around 2.5 to 3 hours from Florida beaches. Additional acreage available. Contact Forrest During or Jeffrey Williams at 855.NLR.LAND for more information.

nationalland.com/listing/home-with-up-to-240-acres



National Land Realty
170 S. Oates St., Suite 5
Dothan, AL 36301
NationalLand.com

Forrest During
Office: 855-657-5263
Cell: 205-902-8779
Fax: 888-672-1810
Fduring@nationalland.com

Jeffrey Williams
Office: 855-657-5263
Cell: 334-355-0812
Fax: 888-672-1810

The above information is from sources deemed reliable, however the accuracy is not guaranteed.
National Land Realty assumes no liability for error, omissions or investment results.