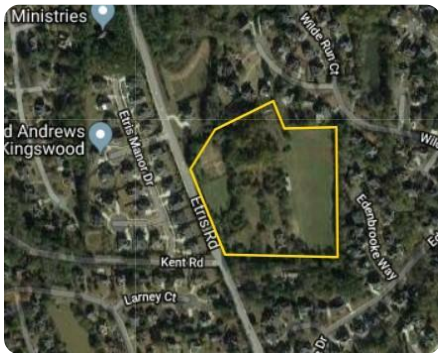


SOLD



Prime Development Opportunity in Roswell

11.75 +/- Acres | Fulton County, GA



ADDRESS

12155 & 12165 Etris Road
Roswell, GA 30075

LOCATION

GA-400N to G-140 (exit 7B). Merge onto Holcomb Bridge Rd. Turn right on Crabapple Rd. Turn left onto Etris Rd, 0.6 miles on the right.

PROPERTY SUMMARY

Highly sought-after City of Roswell. Excellent schools, shopping, and dining. 11.75 +/- level acres and 510+/- ft of paved frontage along Etris Road. Right across the street from highly successful Edward Andrews Homes Kingswood development. Perfect for the high-end residential developer.

nationalland.com/listing/prime-development-opportunity-in-roswell



National Land Realty
2250 North Druid Hills Road
Ste 234
Atlanta, GA 30329
NationalLand.com



Brian Prusik
Office: 770-749-7135
Cell: 770-335-3078
Fax: 864-331-1610
Bprusik@nationalland.com

The above information is from sources deemed reliable, however the accuracy is not guaranteed.
National Land Realty assumes no liability for error, omissions or investment results.