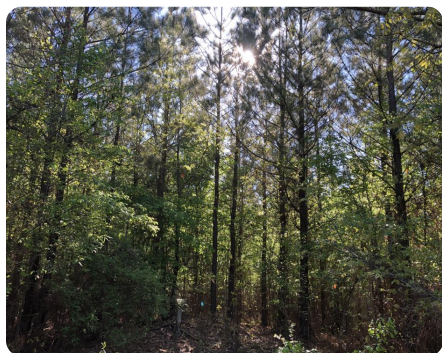


SOLD



## Investment Timberland

99 +/- Acres | Calhoun County, MS



### ADDRESS

00 Hwy 460  
Vardaman, MS 38878

### LOCATION

### PROPERTY SUMMARY

Investment worthy timberland with ample paved road frontage and utilities available. 1 & 12 year old pine plantations on gentle rolling hills in a quiet rural setting almost ready for a first thinning.

[nationalland.com/listing/investment-timberland](https://nationalland.com/listing/investment-timberland)



**National Land Realty**  
415 Lee Horn Drive  
Suite 3  
Houston, MS 38851  
[NationalLand.com](https://NationalLand.com)



**Mark Lewis, ALC**  
Office: 405-788-1304  
Cell: 662-418-4422  
[mlewis@nationalland.com](mailto:mlewis@nationalland.com)

The above information is from sources deemed reliable, however the accuracy is not guaranteed.  
National Land Realty assumes no liability for error, omissions or investment results.