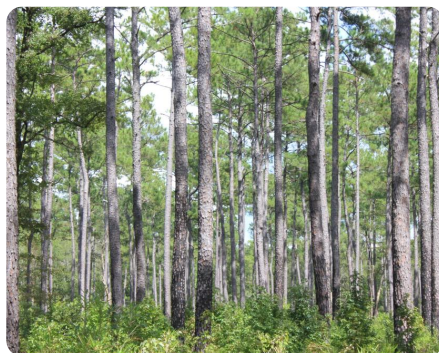
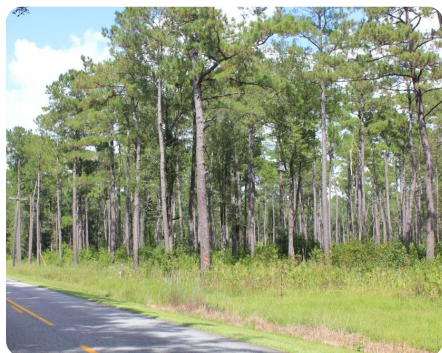


**SOLD**



## Shulerville Farm and Timber Investment

29.5 +/- Acres | Berkeley County, SC



### ADDRESS

0 Shulerville Road  
Shulerville, SC 29453

### PROPERTY SUMMARY

This is an excellent opportunity to own large acreage in the Francis Marion National Forest now with paved road frontage and access. This property features mature planted and natural pines. The land is in a quiet and secluded area, but only 30 minutes from the conveniences of Mt. Pleasant and 15 minutes to the fishing village of McClellanville. Adjacent acreage can also be purchased totaling 151 +/- acres.

[nationalland.com/listing/shulerville-42-acres](https://nationalland.com/listing/shulerville-42-acres)



**National Land Realty**  
669 Marina Drive  
Ste B-4  
Charleston, SC 29492  
[NationalLand.com](https://NationalLand.com)



**Gregory Greer**  
Office: 855-384-5263  
Cell: 843-754-3064  
Fax: 864-331-1610  
[Ggreer@nationalland.com](mailto:Ggreer@nationalland.com)

The above information is from sources deemed reliable, however the accuracy is not guaranteed.  
National Land Realty assumes no liability for error, omissions or investment results.