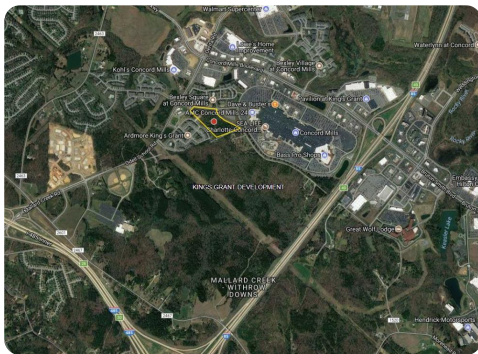


UNDER CONTRACT



11.5 Acres Development Land Concord Mills Mall, Charlotte, NC

11.5 +/- Acres (\$224,957/acre) | Mecklenburg County, NC | \$2,587,000



ADDRESS

9004 Carolina Lily Ln
Charlotte, NC 28262

LOCATION

Property is located off of Carolina Lily Lane just south of Concord Mills Mall

PROPERTY SUMMARY

The parcel straddles the Mecklenburg/Cabarrus County line with 6.5 acres located in Mecklenburg County and 5 acres located in Cabarrus County. The site is across the street from Concord Mills Mall, one of the largest tourist attractions in the state of North Carolina. The last leg of I-485, Charlotte's Outer-Belt, was completed in 2015 and includes a new interchange less than 1 mile south of the property. This interchange provides a new point of access for those visiting the mall. The increased traffic flow funnels directly by the site as cars access the mall's southern ring road.

nationalland.com/listing/115-acres-development-land-concord-mills-mall-charlotte-nc



National Land Realty
1822 S Wendover Road
Charlotte, NC 28211
NationalLand.com



Peter Mazeine
Office: 704-228-4925
Cell: 704-906-1202
Fax: 864-331-1610
Pmazeine@nationalland.com

The above information is from sources deemed reliable, however the accuracy is not guaranteed. National Land Realty assumes no liability for error, omissions or investment results.