

**FIVE FT. PIERCE
LOTS**

4.15 +/- Acres

Saint Lucie County, FL

\$89,600

**NATIONAL
LAND
REALTY®**



**NATIONAL
LAND
REALTY®**

National Land Realty
141 5th Street NW
Suite 202
Winter Haven, FL 33881
www.NationalLand.com



Chip Fortenberry, ALC, MBA
Office: 863.293.5600
Cell: 863.673.9368
Fax: 888.823.0412
Cfortenberry@NationalLand.com

The information herein is from sources deemed reliable, however the accuracy is not guaranteed.
National Land Realty assumes no liability for error, omissions or investment results.



OVERVIEW:

5 individual wooded lots for sale ranging from .46 acres to 1.29 acres. 4 of the lots are zoned industrial with one being residential Zillow predicts the home values in Fort Pierce North will rise 12.7% (2021) in the next year.

PARCEL #/ID: 1428-702-0627-000-3, 1428-702-0198-000-6, 1428-702-0188-000-3, 1428-702-0172-000-8, 1428-702-0548-000-5

TAXES: \$1,323/year (2021)

ADDRESS:

Hawthorn Road
Fort Pierce, FL 34946

LOCATION:

From Kings Highway and County Road 608 east, travel east on County Road 608 2.6 miles to Hawthorn Rd.

ACREAGE BREAKDOWN:

4.15 +/- acres

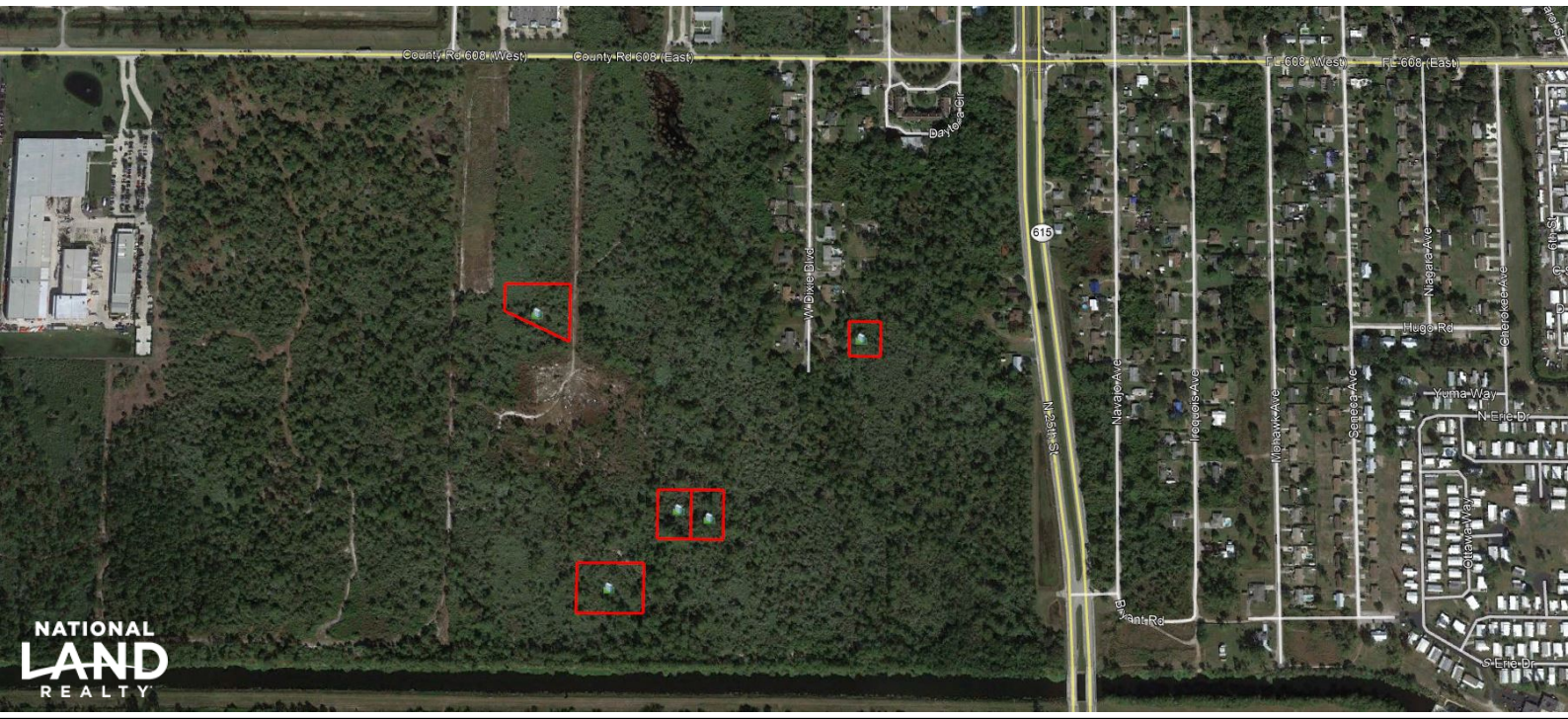


PROPERTY HIGHLIGHTS:

- 10 mins to shopping, the Florida Turnpike and Interstate 95
- 1 minute from Ft. Pierce International Airport
- 9 minutes to beaches
- Zoned for White City Elementary School, Dan Mccarty Middle School and Fort Pierce Westwood High School
- 64 minutes to Palm Beach International Airport

VIEW FULL LISTING:

www.nationalland.com/viewlisting.php?listingid=1392632





National Land Realty
141 5th Street NW
Suite 202
Winter Haven, FL 33881
www.NationalLand.com



Chip Fortenberry, ALC, MBA
Office: 863.293.5600
Cell: 863.673.9368
Fax: 888.823.0412
Cfortenberry@NationalLand.com