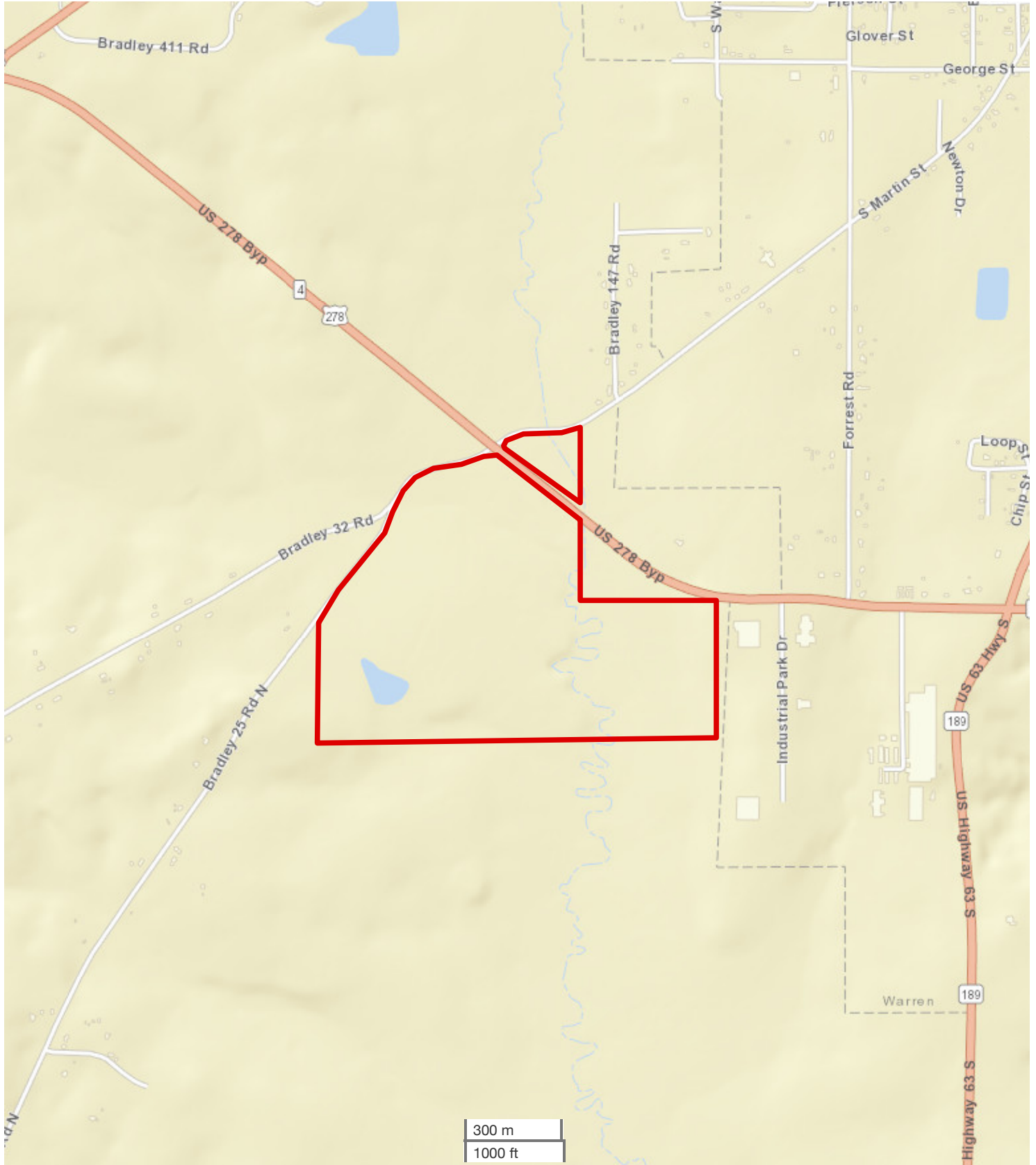




JERAMY STEPHENS, ALC
Broker/Partner, Little Rock, AR Office
Cell: 870-672-3250
Office: 864-331-1600
Fax: 501-325-0080
Jstephens@nationalland.com

190+/- Acres Commercial Development
Bradley County, AR
190 +/- Acres (\$3,261/acre)
\$619,500



All boundary lines noted in pictures, aerials or maps should be considered estimates and not relied on as legal documents or descriptions.