

**ALTURAS CITRUS
GROVE**

**44 +/- Acres
Polk County, FL**

\$299,000

PENDING

**NATIONAL
LAND
REALTY®**



**NATIONAL
LAND
REALTY®**

National Land Realty
141 5th Street NW
Suite 202
Winter Haven, FL 33881
www.NationalLand.com



Chip Fortenberry, ALC, MBA
Office: 863.293.5600
Cell: 863.673.9368
Fax: 888.823.0412
Cfortenberry@NationalLand.com

The information herein is from sources deemed reliable, however the accuracy is not guaranteed.
National Land Realty assumes no liability for error, omissions or investment results.



OVERVIEW:

44 acre citrus grove. 20 acres tangerines, 8 acres lemons, 12 acres Valencia Oranges. 6 inch well with diesel power unit and 6 inch centrifugal pump which pumps out of pond with diesel power unit. Jet Irrigation. 100% of grove irrigated at same time. Agent is owner of the grove.

PARCEL #/ID: 263015000000013030, 263015000000013010, 263010000000024020,263010000000024030

TAXES: \$769/year (2019)

ADDRESS:

Estes Road
Bartow, FL 33830

LOCATION:

From Alturas Loop Road, drive east on Estes road to grove

ACREAGE BREAKDOWN:

44 +/- acres

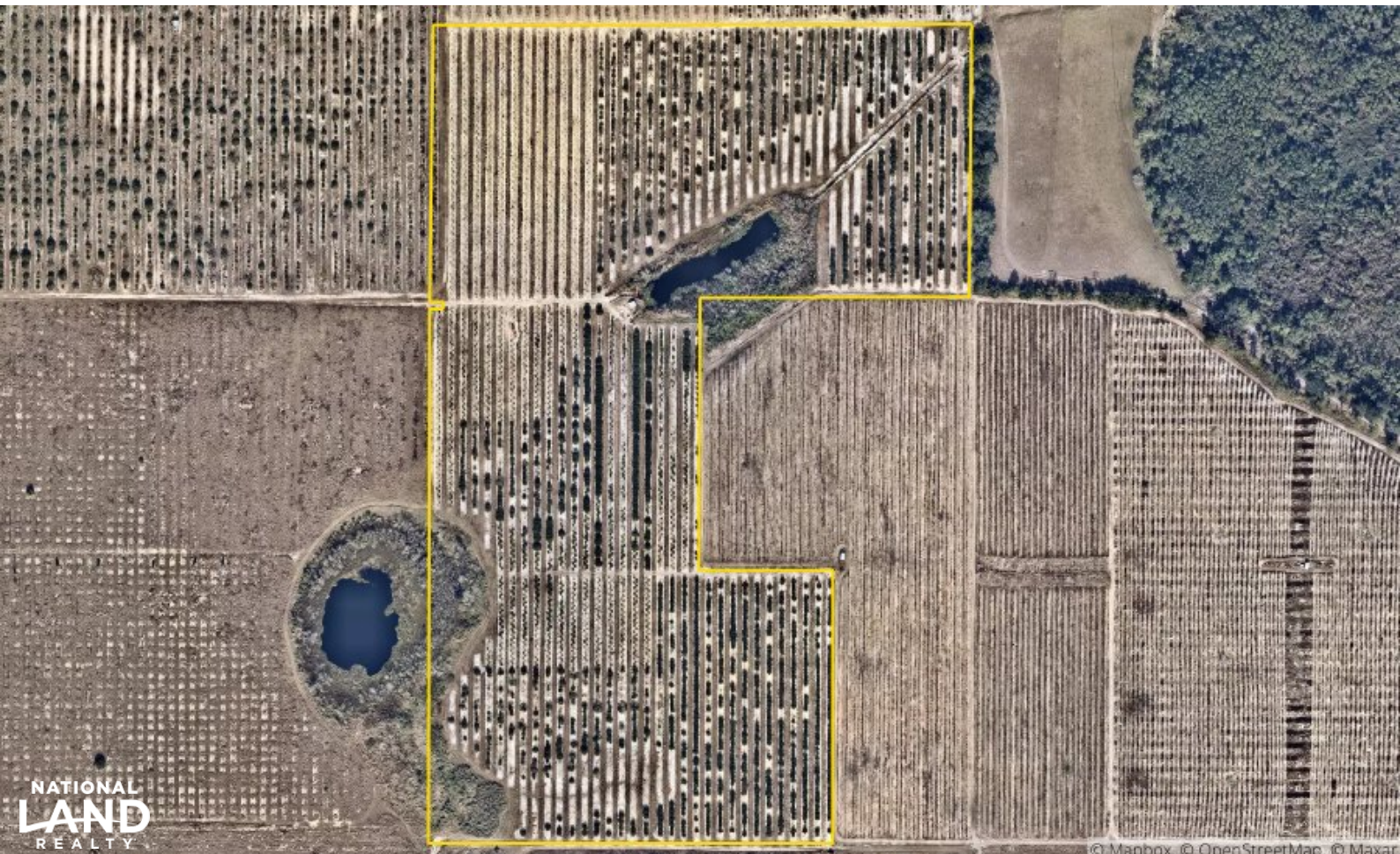


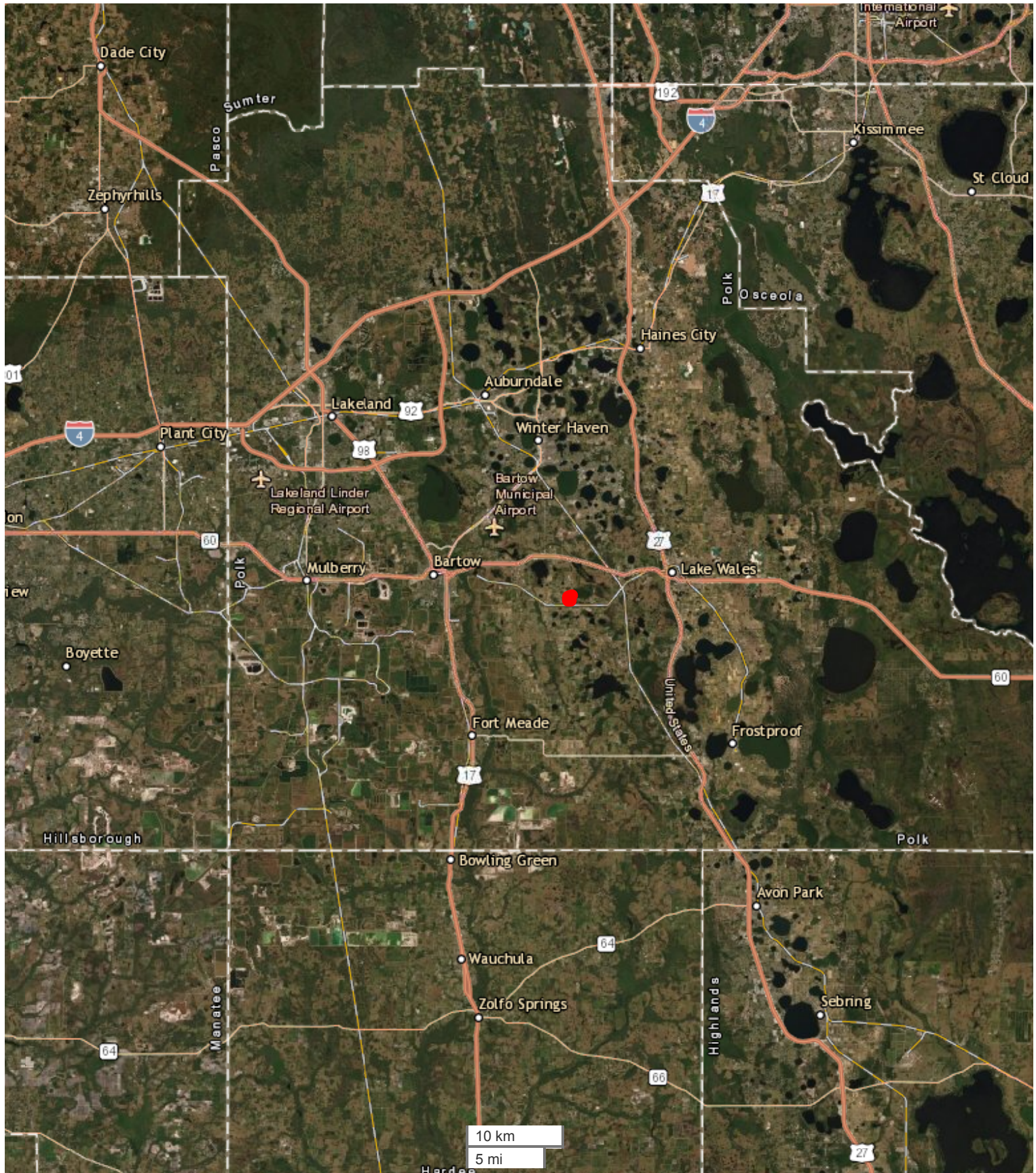
PROPERTY HIGHLIGHTS:

- 20 acres tangerines, 8 acres lemons, 12 acres Valencia Oranges.
- 6 inch well with diesel power unit and 6 inch centrifugal pump that pumps out of pond with diesel power unit. Jet Irrigation. 100% of grove irrigated at same time.
- Set up for fertigation and chemigation
- Water Use Permit through 2033
- High fruit contract on Valencia's for next two years
- 5 minutes to SR 60
- 20 minutes to Downtown Winter Haven

VIEW FULL LISTING:

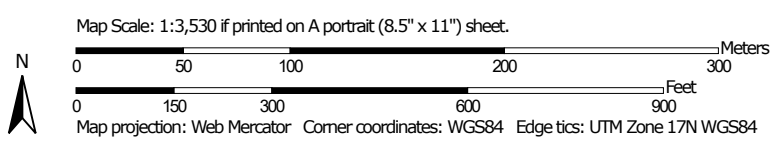
www.nationalland.com/viewlisting.php?listingid=1944212





All boundary lines noted in pictures, aerials or maps should be considered estimates and not relied on as legal documents or descriptions.

Soil Map—Polk County, Florida



MAP LEGEND

Area of Interest (AOI)

 Area of Interest (AOI)

Soils

 Soil Map Unit Polygons

 Soil Map Unit Lines

 Soil Map Unit Points

Special Point Features



Blowout



Borrow Pit



Clay Spot



Closed Depression



Gravel Pit



Gravelly Spot



Landfill



Lava Flow



Marsh or swamp



Mine or Quarry



Miscellaneous Water



Perennial Water



Rock Outcrop



Saline Spot



Sandy Spot



Severely Eroded Spot



Sinkhole



Slide or Slip



Sodic Spot



Spoil Area



Stony Spot



Very Stony Spot



Wet Spot



Other



Special Line Features

Water Features



Streams and Canals

Transportation



Rails



Interstate Highways



US Routes



Major Roads



Local Roads

Background



Aerial Photography

MAP INFORMATION

The soil surveys that comprise your AOI were mapped at 1:20,000.

Warning: Soil Map may not be valid at this scale.

Enlargement of maps beyond the scale of mapping can cause misunderstanding of the detail of mapping and accuracy of soil line placement. The maps do not show the small areas of contrasting soils that could have been shown at a more detailed scale.

Please rely on the bar scale on each map sheet for map measurements.

Source of Map: Natural Resources Conservation Service

Web Soil Survey URL:

Coordinate System: Web Mercator (EPSG:3857)

Maps from the Web Soil Survey are based on the Web Mercator projection, which preserves direction and shape but distorts distance and area. A projection that preserves area, such as the Albers equal-area conic projection, should be used if more accurate calculations of distance or area are required.

This product is generated from the USDA-NRCS certified data as of the version date(s) listed below.

Soil Survey Area: Polk County, Florida

Survey Area Data: Version 18, Jun 11, 2020

Soil map units are labeled (as space allows) for map scales 1:50,000 or larger.

Date(s) aerial images were photographed: Dec 19, 2013—Nov 26, 2017

The orthophoto or other base map on which the soil lines were compiled and digitized probably differs from the background imagery displayed on these maps. As a result, some minor shifting of map unit boundaries may be evident.

Map Unit Legend

Map Unit Symbol	Map Unit Name	Acres in AOI	Percent of AOI
2	Apopka fine sand, 0 to 5 percent slopes	1.0	2.4%
3	Candler sand, 0 to 5 percent slopes	13.2	30.5%
13	Samsula muck, frequently ponded, 0 to 1 percent slopes	0.0	0.0%
15	Tavares fine sand, 0 to 5 percent slopes	16.9	38.9%
21	Immokalee sand	12.2	28.2%
68	Arents, 0 to 5 percent slopes	0.0	0.1%
Totals for Area of Interest		43.5	100.0%