

**FIRST STREET &  
AVENUE O  
COMMERCIAL  
PROPERTY  
0.58 +/- Acres  
Polk County, FL  
\$595,000**

**NATIONAL  
LAND  
REALTY®**



**NATIONAL  
LAND  
REALTY®**

**National Land Realty**  
141 5th Street NW  
Suite 202  
Winter Haven, FL 33881  
[www.NationalLand.com](http://www.NationalLand.com)



**Chip Fortenberry, ALC, MBA**  
Office: 863.293.5600  
Cell: 863.673.9368  
Fax: 888.823.0412  
[Cfortenberry@NationalLand.com](mailto:Cfortenberry@NationalLand.com)

The information herein is from sources deemed reliable, however the accuracy is not guaranteed.  
National Land Realty assumes no liability for error, omissions or investment results.



**OVERVIEW:**

0.58 acre commercial property with 900 Sq/ft office building on corner of 1st St and Ave O. Tenant in office. Perfect for office buildings, medical offices, retail.

**PARCEL #/ID:** 262833654500000146, 262833654500000145

**TAXES:** \$3,906/year (2019)

**ADDRESS:**

1500 SE 1st St  
Winter Haven, FL 33880

**LOCATION:**

Located on the corner of 1st St. SE and Ave O Winter Haven, FL 33884

**ACREAGE BREAKDOWN:**

0.58 +/- acres

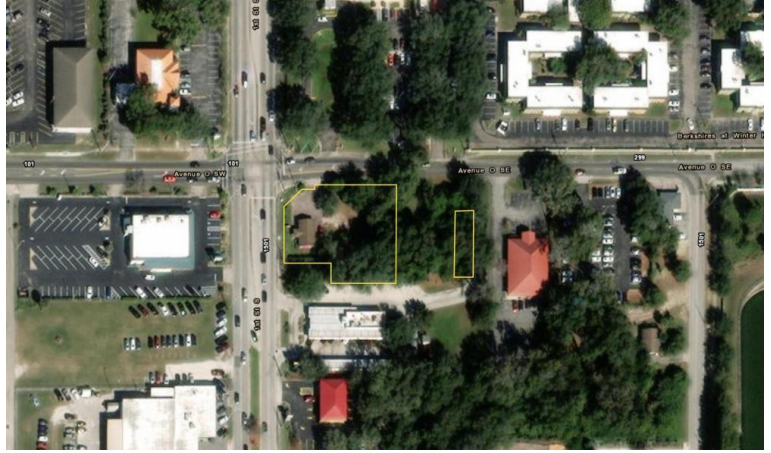


## PROPERTY HIGHLIGHTS:

- 0.58 acre commercial property with 900 Sq/ft office building on corner of 1st St and Ave O
- Tenant in office
- Perfect for office buildings, medical offices, retail
- Medical offices surround the site
- 2 minutes to Hospital
- Power, water, sewer, telephone, internet, natural gas available

## VIEW FULL LISTING:

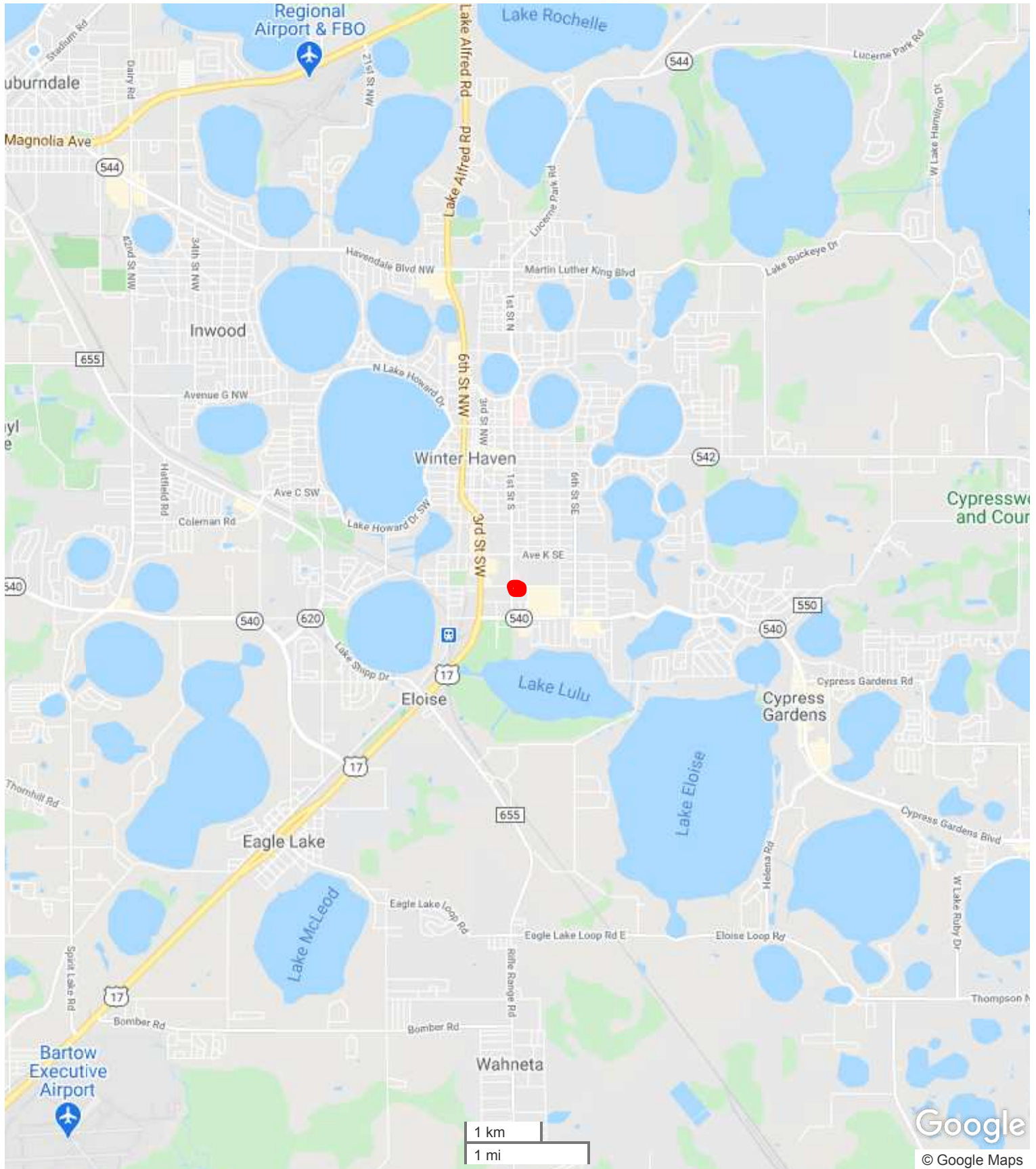
[www.nationalland.com/viewlisting.php?listingid=1817114](http://www.nationalland.com/viewlisting.php?listingid=1817114)







*All boundary lines noted in pictures, aerials or maps should be considered estimates and not relied on as legal documents or descriptions.*



All boundary lines noted in pictures, aerials or maps should be considered estimates and not relied on as legal documents or descriptions.