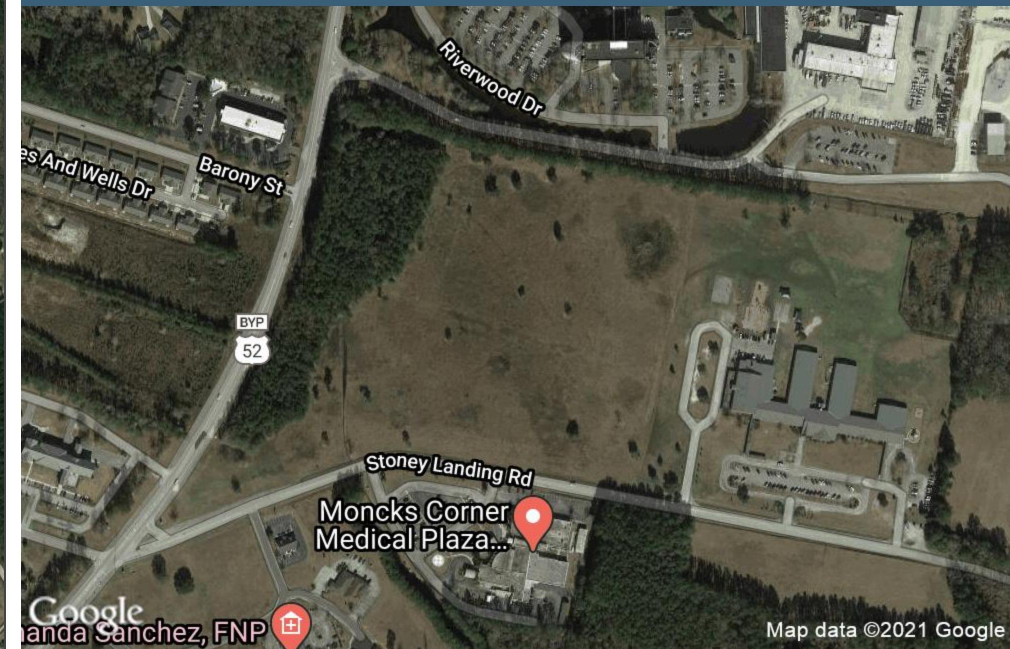


Retail Map

Aerial View

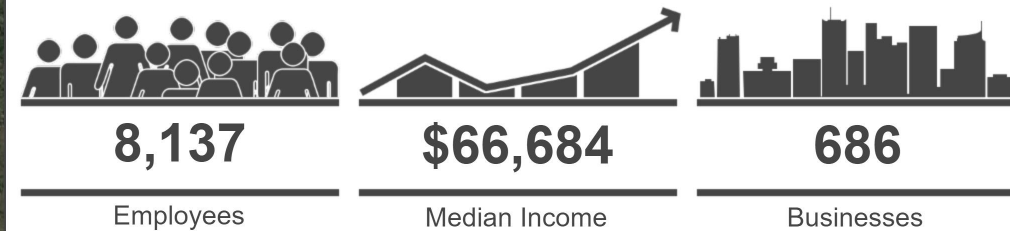


Description

Demographics

	1 mi radius	3 mi radius	5 mi radius
Population	2,218	11,703	22,068
Households	811	4,302	7,997
Population Median Age	37.3	38.2	38.3
5 Yr Pop Growth (Total%)	13.8%	15.0%	15.4%

5 Mile Information



**NATIONAL
LAND
REALTY**

Prepared For **Hunter Suggs**