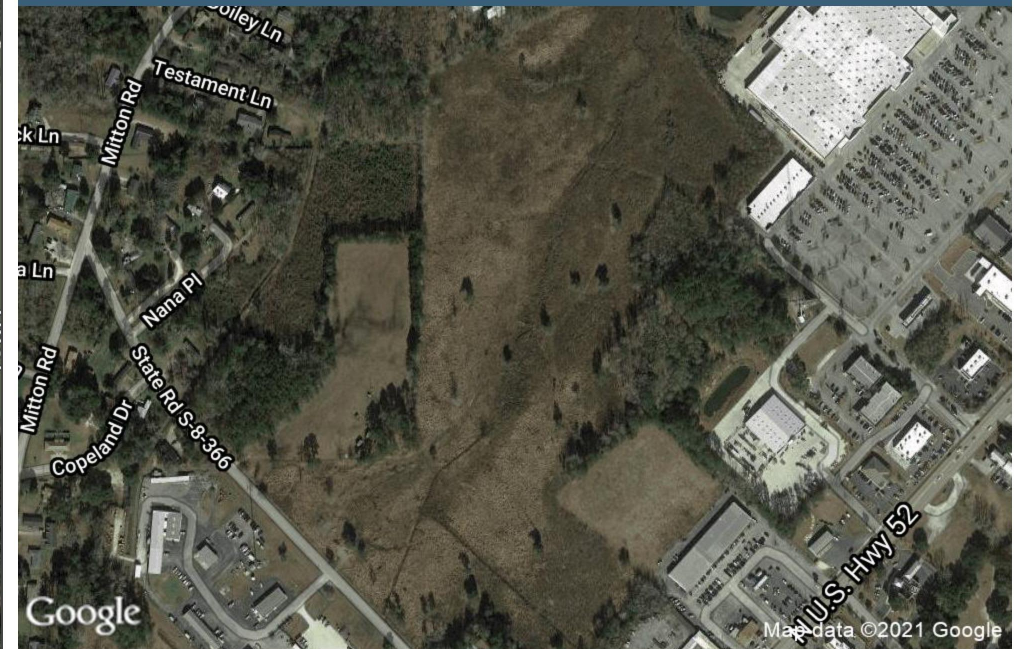




Retail Map

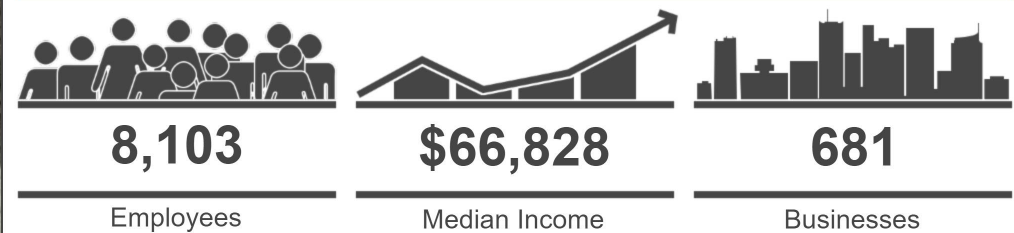
Aerial View



Demographics

	1 mi radius	3 mi radius	5 mi radius
Population	1,228	11,742	21,832
Households	474	4,332	7,907
Population Median Age	39.3	38.4	38.3
5 Yr Pop Growth (Total%)	15.1%	14.9%	15.4%

5 Mile Information



**NATIONAL
LAND
REALTY**

Prepared For **Hunter Suggs**