

PEGGY'S COVE LOT 1
7.11 +/- Acres
Lake County, FL
\$174,000

NEW LISTING

NATIONAL
LAND
REALTY®



NATIONAL
LAND
REALTY®

National Land Realty
339 W Alfred Street
Tavares, FL 32778
www.NationalLand.com



Richard Gonzalez, ALC, CCIM, MSC
Office: 352.408.3892
Cell: 352.408.3892
Fax: 864.331.1610
Rgonzalez@NationalLand.com

The information herein is from sources deemed reliable, however the accuracy is not guaranteed.
National Land Realty assumes no liability for error, omissions or investment results.



OVERVIEW:

Come enjoy peace and quiet on this 7+ acre lot on a small lake. Canoe, kayak, fish, and swim in your own backyard paradise. The AG zoning allows you to have your horses and chickens too. With ample frontage on Skyline drive, the property is easily accessed. Build your dream home on the hill overlooking this pretty 8 acre lake.

PARCEL #/ID: 18-18-27-0400-000- 00100

TAXES: \$1,454/year (2020)

ADDRESS:

Skyline Drive
Umatilla, FL 32784

LOCATION:

From Hwy. 19 and CR 450A, travel east on 450A to 44A, travel N on 44A 2 miles to Skyline drive, travel N on Skyline 0.8 miles (adjacent to Umatilla airport) to S end of the property. N end of property is about 200 yards S of Saltsdale.

ACREAGE BREAKDOWN:

7.11+/- acres



PROPERTY HIGHLIGHTS:

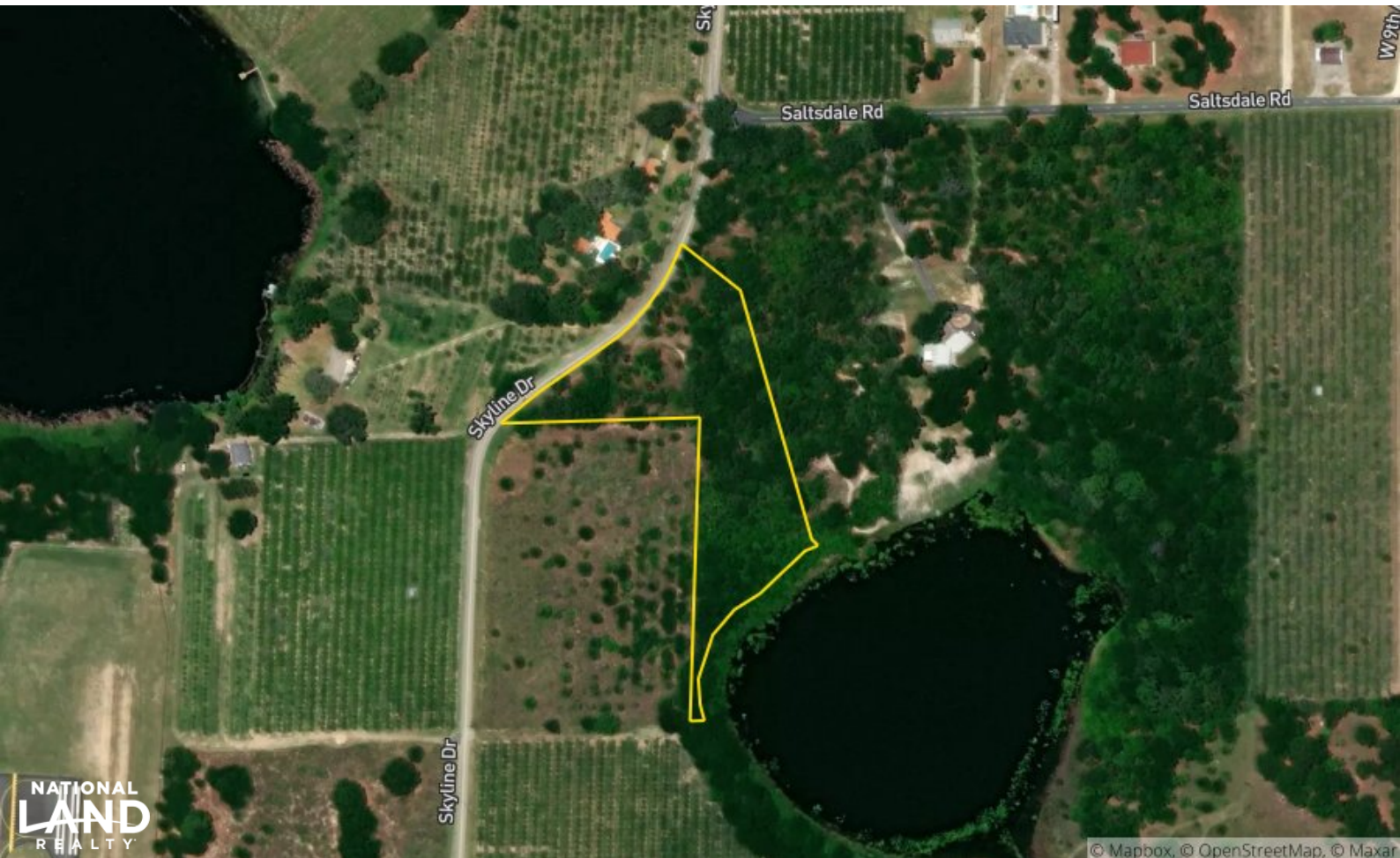
- Private lakefront setting
- Wonderful hilltop views
- Great homesite in the country
- Excellent frontage on Skyline drive
- Nice mix of topography

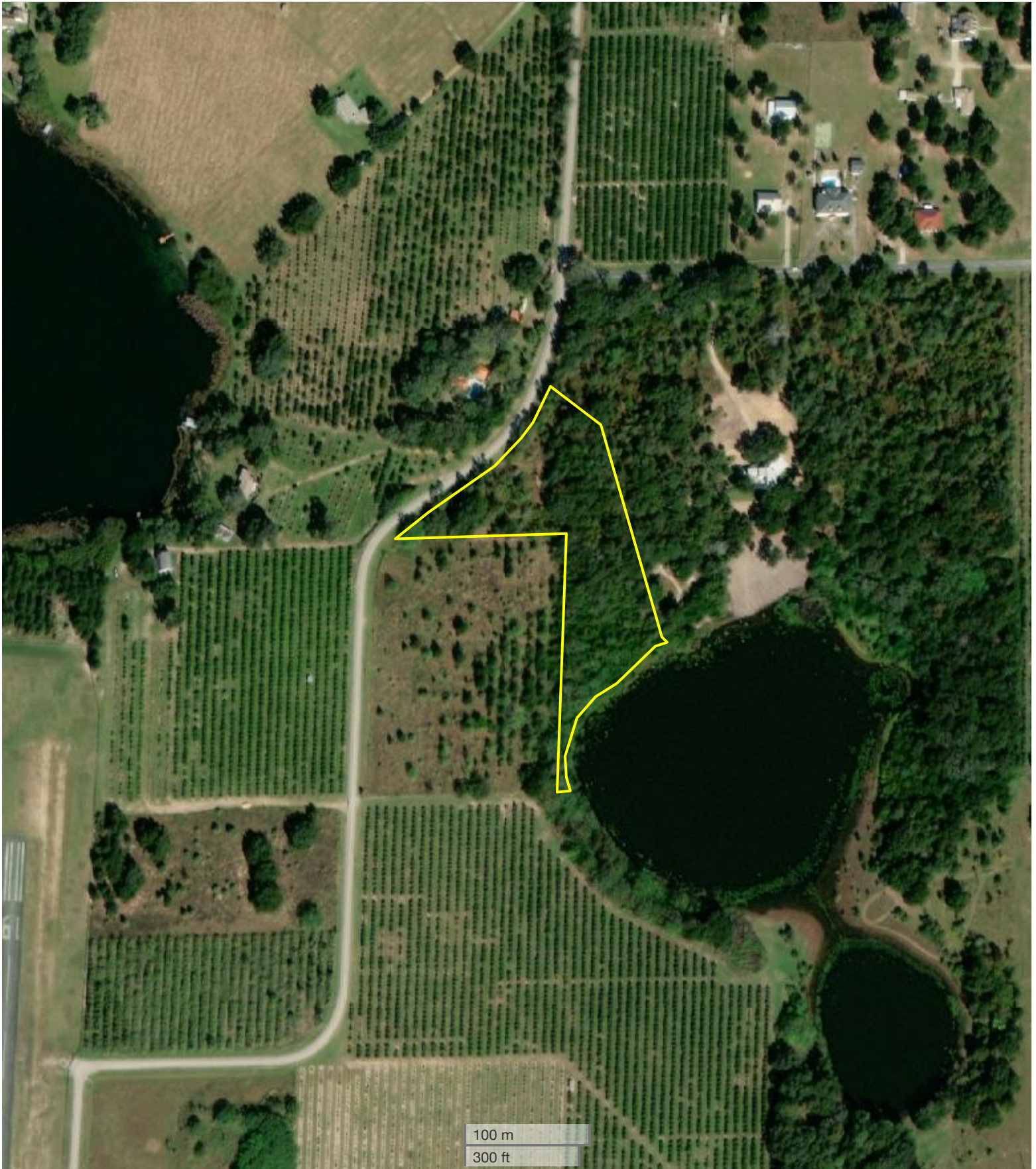
LEGAL DESCRIPTION:

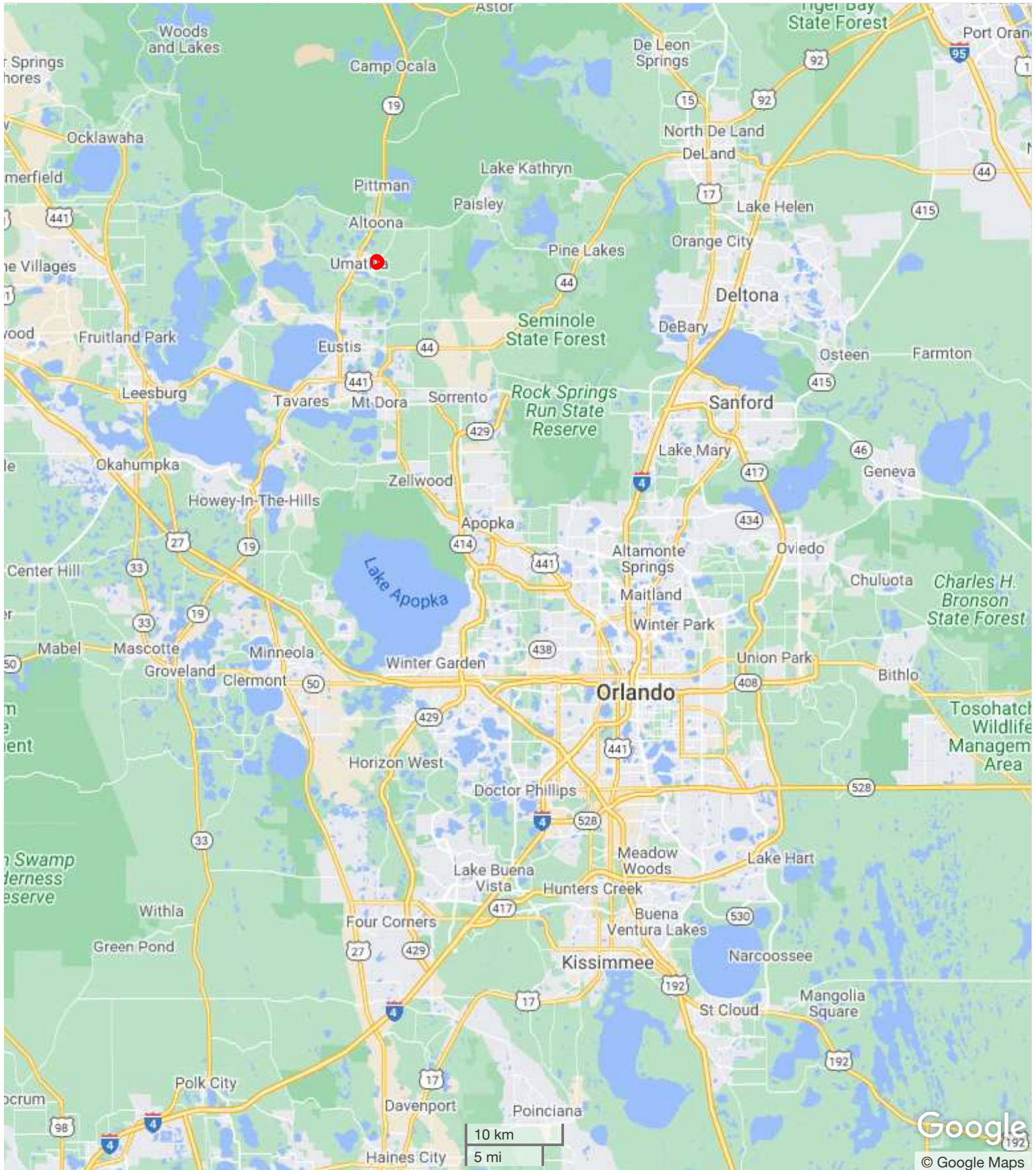
PEGGY'S COVE PB 58 PG 89-90 LOT 1 ORB 4162
PG 2395 ORB 4720 PG 481

VIEW FULL LISTING:

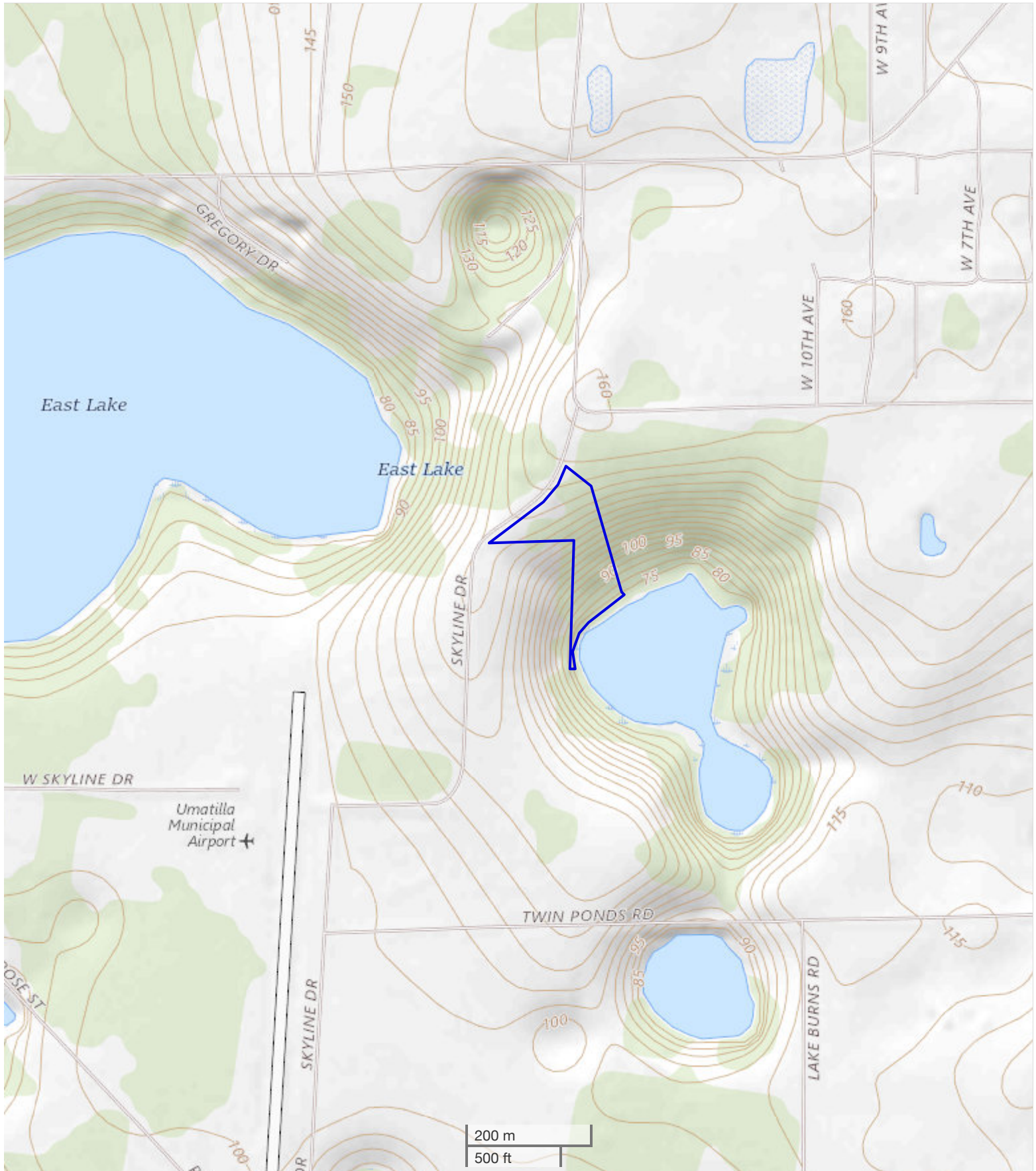
www.nationalland.com/viewlisting.php?listingid=2012429







All boundary lines noted in pictures, aerials or maps should be considered estimates and not relied on as legal documents or descriptions.



All boundary lines noted in pictures, aerials or maps should be considered estimates and not relied on as legal documents or descriptions.

