

2237 ACRES BEAVER COUNTY

2237 +/- Acres
Beaver County, OK

\$2,561,365

NATIONAL
LAND
REALTY®



National Land Realty
1805 E 8th Street
Chandler, OK 74834
www.NationalLand.com



Jeff Danker
Office: 405.240.5351
Cell: 405.229.8458
Fax: 864.331.1610
Jdanker@nationalland.com



Daniel McVay
Office: 405.240.5351
Cell: 918.223.7780
Fax: 864.331.1610
Dmcvay@nationalland.com

The information herein is from sources deemed reliable, however the accuracy is not guaranteed.
National Land Realty assumes no liability for error, omissions or investment results.



OVERVIEW:

Don't miss this one! One of the premier destinations for big Whitetail's. Located just west of LaVerne Oklahoma this ranch has it all. 2237 acres that has the Kiowa Creek running right through the heart of it. This property is littered with big deer, turkeys and quail. But also has some of the best grazing for cattle around. With several cross fences and lots of water the property can be utilized in so many ways. It also has a nice home and beautiful barns with pipe fencing. Priced right so book an appointment to see this great property today.

PARCEL #/ID: 0000-29-03N-28E-0-002-00

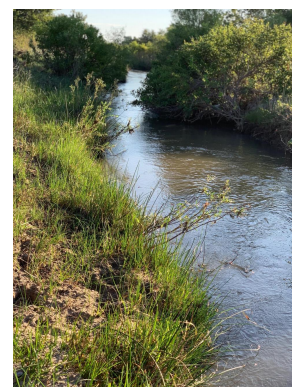
TAXES: (Call Agent for Details)

ADDRESS:

0 N. 1650 Road
Laverne, OK 73848

LOCATION:

Go 6 miles west of LaVerne, OK on E0210 rd. Turn south on N1680 rd and go 2 miles. Turn west on EW23 and go 1 mile.



PROPERTY HIGHLIGHTS:

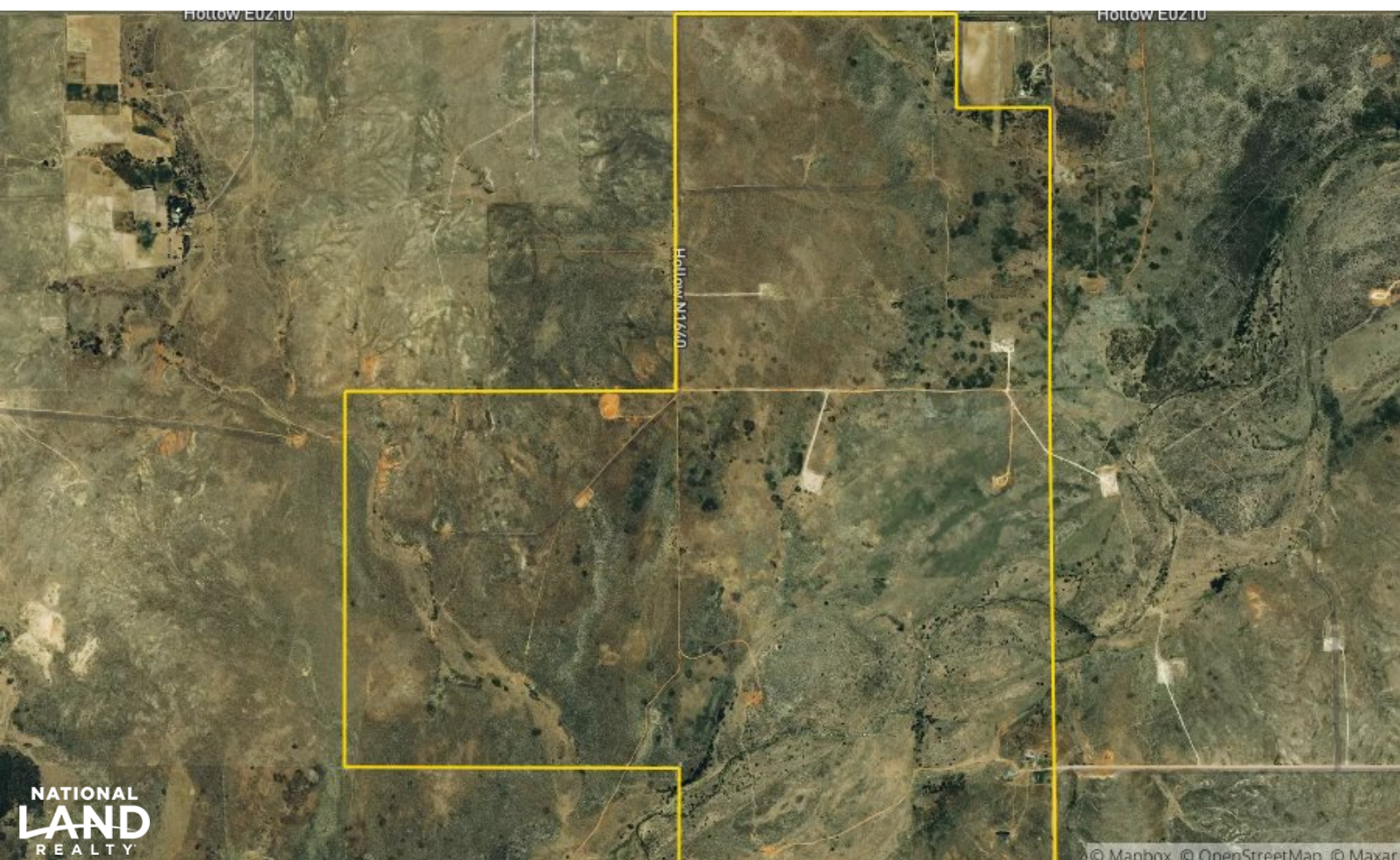
- A must see one-of-a-kind property.
- This property is very secluded with private access.
- Sportsman's paradise!
- Variety of outdoor sporting opportunities.
- Highly productive
- Pasture with beautiful river bottom.
- A viable cattle grazing operation.
- Large population of deer, turkeys, quail and small game.
- Surrounded by hundreds thousands of acres of strictly managed big buck producing habitat.
- One of Oklahoma's best big buck counties with outstanding genetics in this region.

LEGAL DESCRIPTION:

W2NE4-SENE4-W2-SE4,
0000-31-03N-28E-0-001-00, N2N2 LESS 2.7974
acres, NE4-NESE4, N2- NESE4 -NWSW4, N2- SW4,
SE4, SE4-SENE4

VIEW FULL LISTING:


www.nationalland.com/viewlisting.php?listingid=1389367









A portrait of a man with a beard and mustache, wearing a brown cowboy hat and a brown and black plaid shirt over a blue collared shirt. He is standing outdoors with trees in the background.

Daniel McVay
Office: 405.240.5351
Cell: 918.223.7780
Fax: 864.331.1610
Dmcvay@nationalland.com