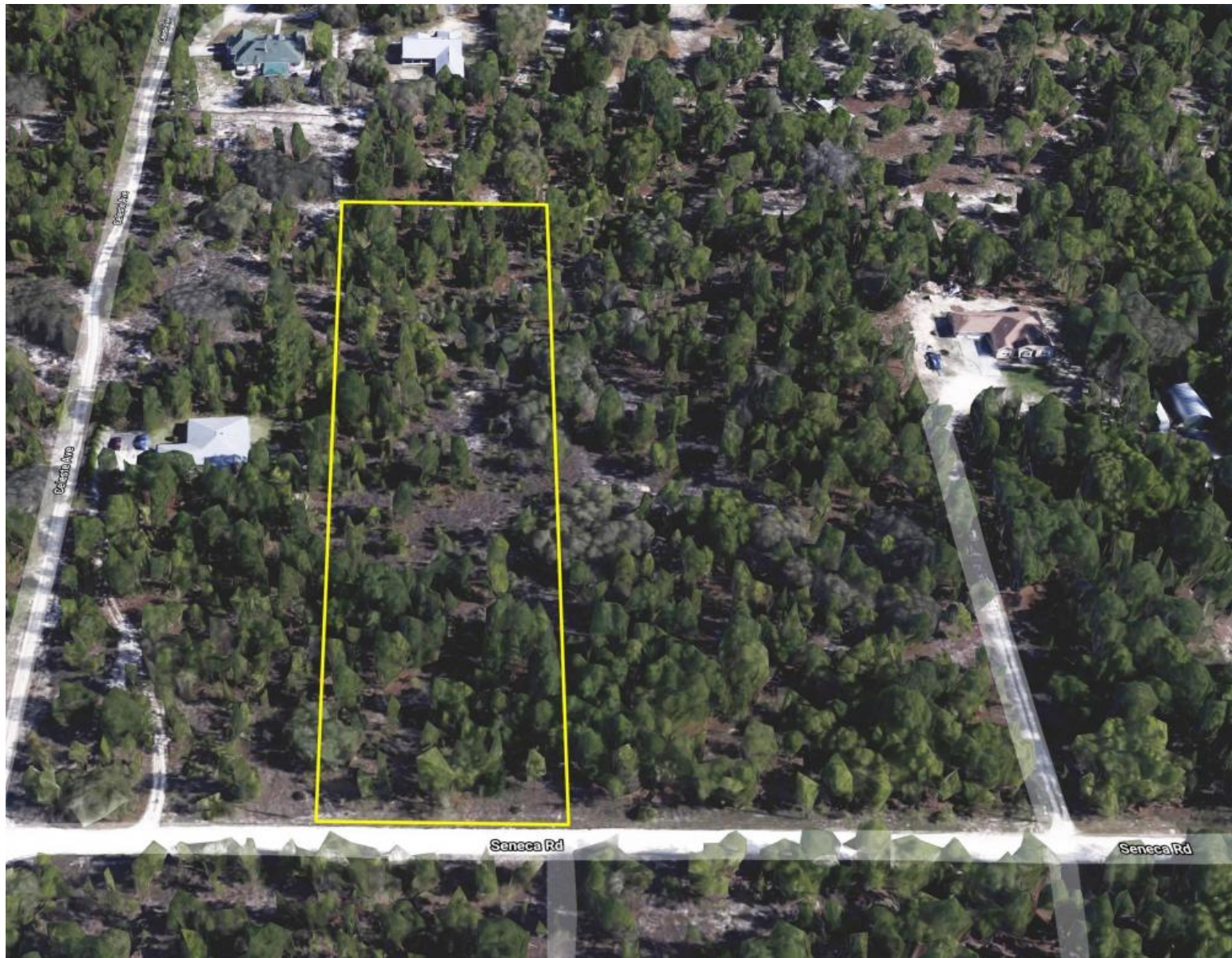


**RURAL VACANT  
HOMESTEAD  
PROPERTY  
2.3 +/- Acres  
Hernando County, FL  
\$40,000**

**NEW LISTING**

**NATIONAL  
LAND  
REALTY®**



**NATIONAL  
LAND  
REALTY®**

National Land Realty  
141 5th Street NW  
Suite 202  
Winter Haven, FL 33881  
[www.NationalLand.com](http://www.NationalLand.com)



**Clarence Zarnes, SGM (Ret.) U.S. Army**  
Office: 407.498.4114  
Cell: 904.651.1804  
Fax: 888.823.0412  
[Czarnes@nationalland.com](mailto:Czarnes@nationalland.com)

The information herein is from sources deemed reliable, however the accuracy is not guaranteed.  
National Land Realty assumes no liability for error, omissions or investment results.





### OVERVIEW:

This is a great oversized country homestead site ready to be developed. It's located in NW part of the County, near lots of activities. It's only minutes from the City Life, the Gulf of Mexico and Beach, Weeki Wachee Gardens, Homosassa Springs and the Underground Spring Feed Chassahowitzka River for Lodging, RVing, Camping, Canoeing, and Swimming. It's also near major roadways such as the Suncoast Parkway (589), US Hwy 98, US Hwy 19, which will take you the furthest points of Florida and beyond.

**PARCEL #/ID:** R21 221 18 1590 0000 0260

**TAXES:** \$419/year (2020)

### ADDRESS:

Seneca Rd  
Weeki Wachee, FL 34614

### LOCATION:

From the Intersection of Main St and Jefferson St in Brooksville, FL, head West on E Jefferson St 0.8 Miles to Southwest Ave and turn Right. Go 289 Ft to Fort Dade Ave and turn Left. Go 3.0 Miles to Citrus Way and turn Right. Go 4.2 Miles to Centralia Rd and turn Left. Go 3.2 Miles to Lelani Dr. Go 1.6 Miles to Quigley Ave and turn Right. Go 0.9 Miles to Celeste Ave and turn Left. Go 0.7 Miles to Seneca Rd and turn Right. Go 335 Ft and the Property is located on the Left.





## PROPERTY HIGHLIGHTS:

- This is a great oversized country homestead site ready to be developed.
- It's located in NW part of the County, near lots of activities.
- It's only minutes from the City Life, the Gulf of Mexico and Beach, Weeki Wachee Gardens, Homosassa Springs and the Underground Spring Feed Chassahowitzka River for Lodging, RVing, Camping, Canoeing, and Swimming.
- It's also near major roadways such as the Suncoast Parkway (589), US Hwy 98, US Hwy 19, which will take you the furthest points of Florida and beyond.

## LEGAL DESCRIPTION:

COUNTRY ESTATES LOT 26

## VIEW FULL LISTING:

[www.nationalland.com/viewlisting.php?listingid=1989140](http://www.nationalland.com/viewlisting.php?listingid=1989140)

