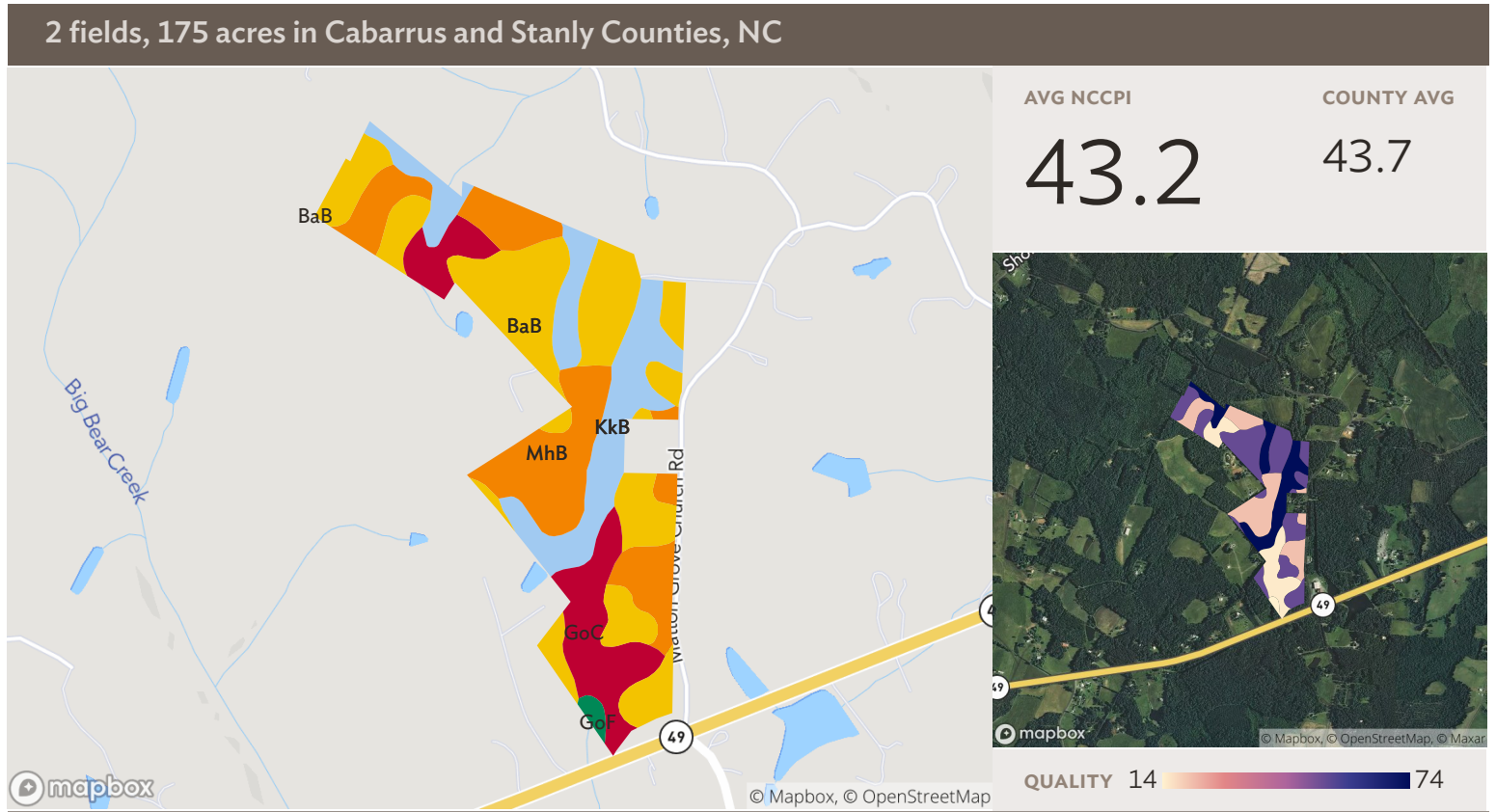


Source: NRCS Soil Survey

All fields

175 ac

SOIL CODE	SOIL DESCRIPTION	ACRES	PERCENTAGE OF FIELD	SOIL CLASS	NCCPI
BaB	Badin channery silt loam, 2 to 8 percent slopes	42.31	24.2%	3	53.4
BaB	Badin channery silt loam, 2 to 8 percent slopes	35.79	20.5%	3	53.4
MhB	Misenheimer channery silt loam, 0 to 4 percent slopes	29.02	16.6%	3	20.8
KkB	Kirksey silt loam, 0 to 6 percent slopes	23.49	13.4%	2	74.4
GoC	Goldston very channery silt loam, 4 to 15 percent slopes	17.04	9.7%	4	14.9
MsA	Misenheimer channery silt loam, 0 to 4 percent slopes	16.05	9.2%	3	20.8
KkB	Kirksey silt loam, 1 to 6 percent slopes	10.38	5.9%	2	74.4
GoF	Goldston very channery silt loam, 15 to 45 percent slopes	0.89	0.5%	7	3.5
174.97					45.1

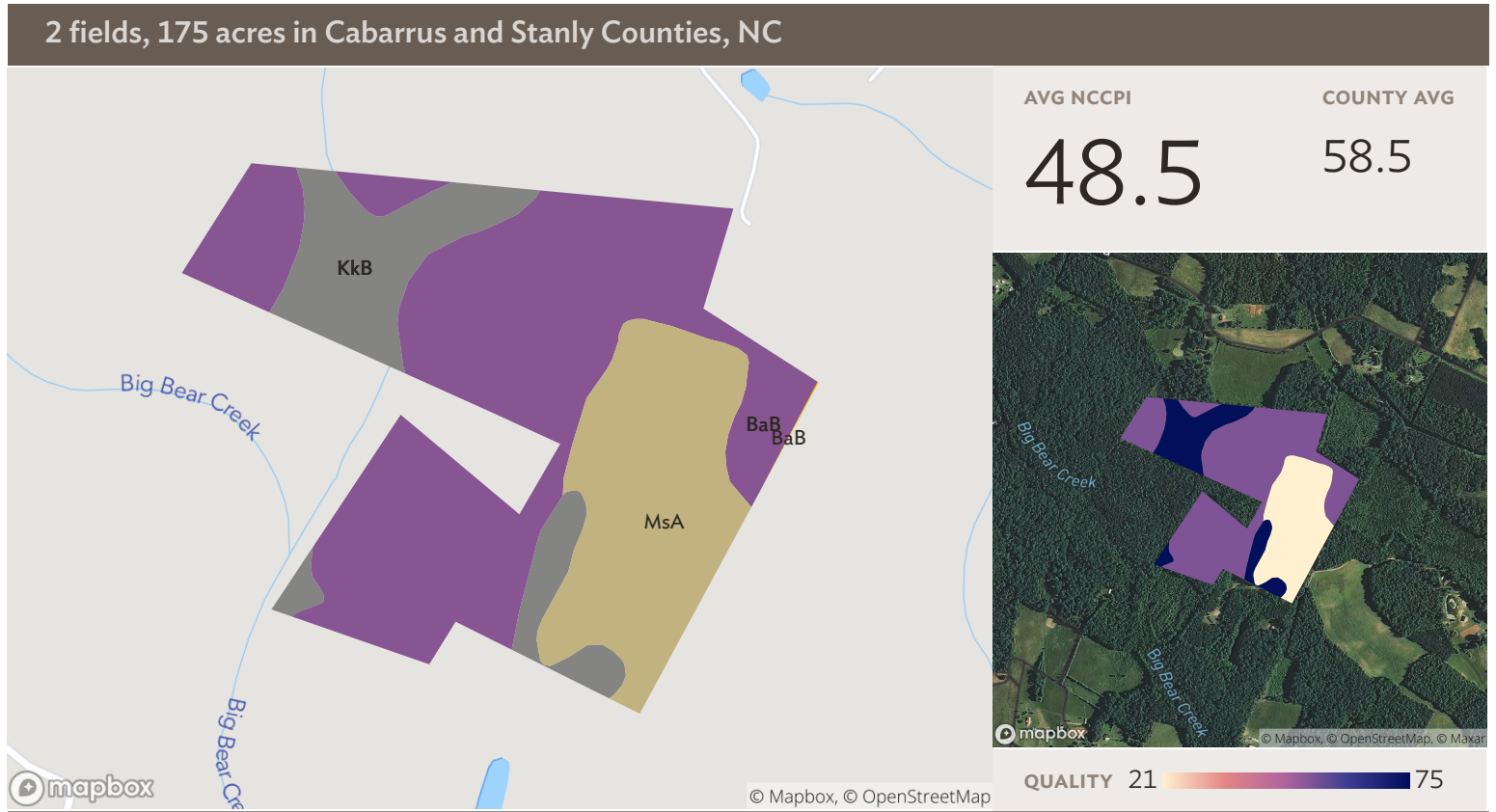


Field 1

Source: NRCS Soil Survey

113 ac

SOIL CODE	SOIL DESCRIPTION	ACRES	PERCENTAGE OF FIELD	SOIL CLASS	NCCPI
BaB	Badin channery silt loam, 2 to 8 percent slopes	42.29	37.5%	3	53.4
MhB	Misenheimer channery silt loam, 0 to 4 percent slopes	29.02	25.7%	3	20.8
KkB	Kirksey silt loam, 0 to 6 percent slopes	23.49	20.8%	2	74.4
GoC	Goldston very channery silt loam, 4 to 15 percent slopes	17.04	15.1%	4	14.9
GoF	Goldston very channery silt loam, 15 to 45 percent slopes	0.89	0.8%	7	3.5
BaB	Badin channery silt loam, 2 to 8 percent slopes	0.00	0.0%	3	53.4
112.73					43.2



Field 2

62 ac

SOIL CODE	SOIL DESCRIPTION	ACRES	PERCENTAGE OF FIELD	SOIL CLASS	NCCPI
BaB	Badin channery silt loam, 2 to 8 percent slopes	35.79	57.5%	3	53.4
MsA	Misenheimer channery silt loam, 0 to 4 percent slopes	16.05	25.8%	3	20.8
KkB	Kirksey silt loam, 1 to 6 percent slopes	10.38	16.7%	2	74.4
BaB	Badin channery silt loam, 2 to 8 percent slopes	0.02	0.0%	3	53.4
		62.24			48.5

2 fields, 175 acres in Cabarrus and Stanly Counties, NC


All fields

175 ac

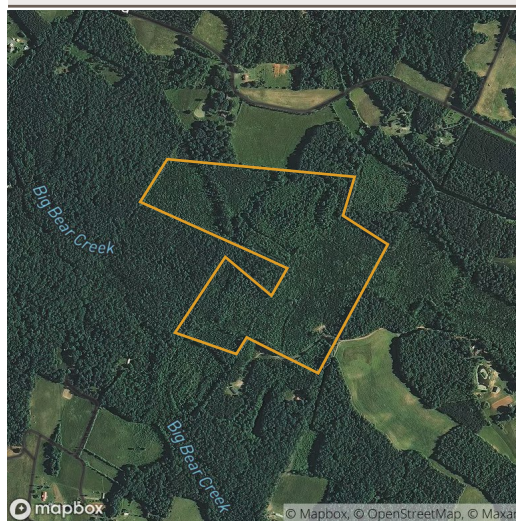
	2019	2018	2017	2016	2015
Forest	98.5%	90.9%	91.4%	90.1%	91.6%
Grass/Pasture	0.5%	4.2%	4.8%	5.3%	3.9%
Other	1.0%	4.9%	3.8%	4.6%	4.5%



Field 1

113 ac

	2019	2018	2017	2016	2015
Forest	97.9%	86.3%	86.7%	85.2%	87.4%
Grass/Pasture	0.8%	6.6%	7.4%	8.0%	5.8%
Non-Cropland	1.1%	6.8%	5.6%	6.6%	6.1%
Other	0.2%	0.4%	0.4%	0.2%	0.7%



Field 2

62 ac

	2019	2018	2017	2016	2015
Forest	99.5%	99.3%	100.0%	98.9%	99.3%
Other	0.5%	0.7%	–	1.1%	0.7%

Source: NASS Cropland Data Layer