

HWY 19 HOMESITE

12 +/- Acres
Taylor County, FL

\$63,000



National Land Realty
9 N. Conception St.
Mobile, AL 36602
www.NationalLand.com



Joe Baya
Office: 855.657.5263
Cell: 904.891.9639
Fax: 888.672.1810
Jbaya@nationalland.com



Caleb Risinger
Office: 855.384.5263
Cell: 540.809.4434
Fax: 864.331.1610
Crisinger@NationalLand.com

The information herein is from sources deemed reliable, however the accuracy is not guaranteed.
National Land Realty assumes no liability for error, omissions or investment results.



OVERVIEW:

Prime location just minutes from Perry, Florida, this site is an ideal development investment or large acreage homesite with timber investment potential and income producing pine straw operation. Great access from HWY 19. The property offers toll-free access to major Florida transportation arteries and is only 40 minutes from Steinhatchee. There are many potential options for the new owner. You need to see this one to appreciate all the possibilities. Additional adjoining acreage available, contact Joe Baya at 904-891-9639.

PARCEL #/ID: 08580-100, 08576-000

TAXES: (Call Agent for Details)

ACREAGE BREAKDOWN:

12 +/- acres



PROPERTY HIGHLIGHTS:

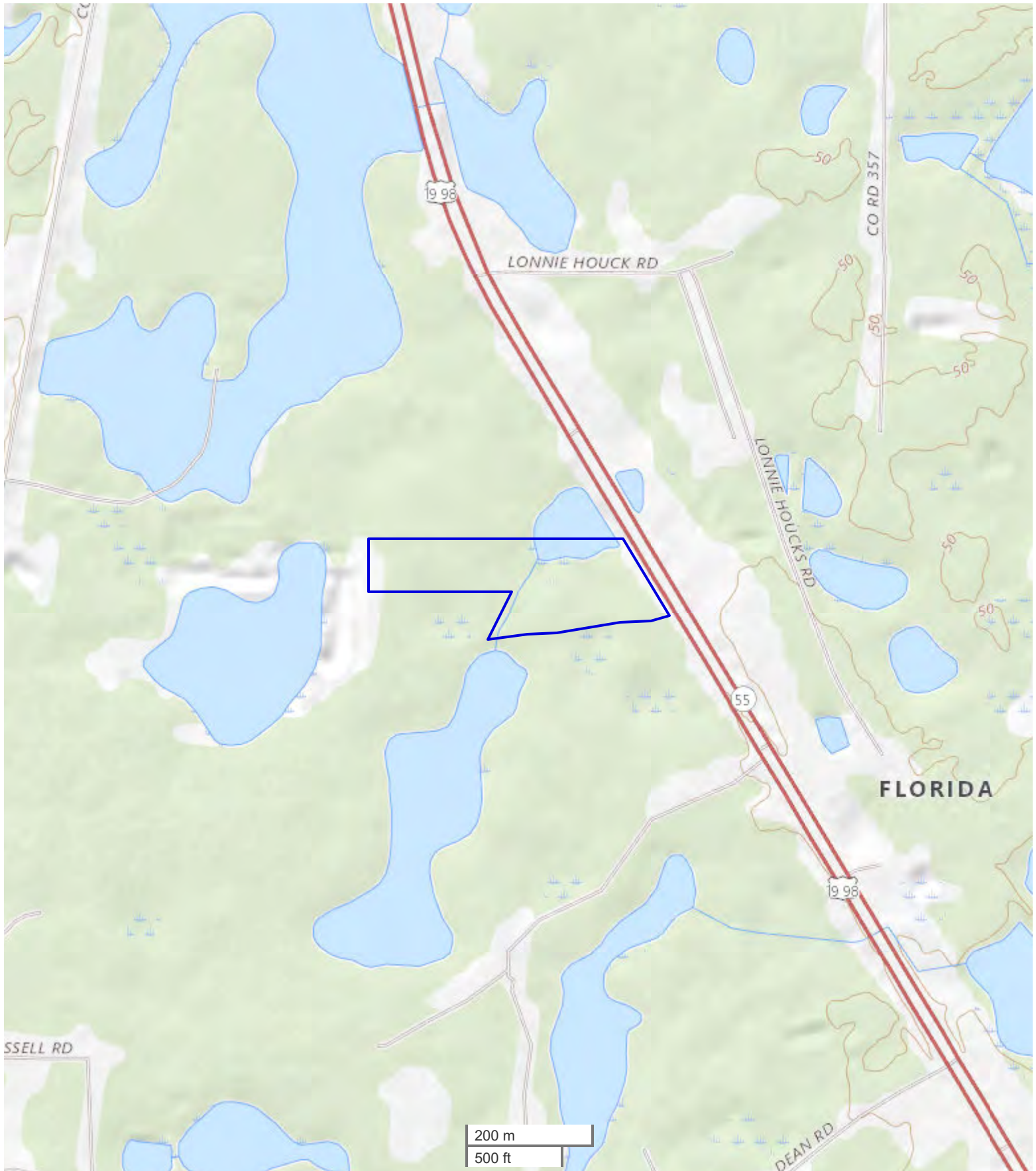
- Located minutes from Perry, FL lies a great investment opportunity for the person looking for large acreage where they can have privacy but still remain close to modern conveniences.
- Country living surrounded by timber for complete privacy yet still maintaining excellent access to HWY 19.
- Ideal development investment with timber investment potential and income producing pine straw operation.
- Many potential uses, could be maintained as a large acreage residential site, converted into pasture ground for a cattle operation, developed into a commercial site with great access from HWY 19, continued as a timber investment.
- 42 Acres plantation timber currently producing annual pine straw income.
- Close to local amenities yet offering a sense of remote privacy.
- Excellent highly visible road frontage.

VIEW FULL LISTING:

www.nationalland.com/viewlisting.php?listingid=1944287







All boundary lines noted in pictures, aeriels or maps should be considered estimates and not relied on as legal documents or descriptions.



