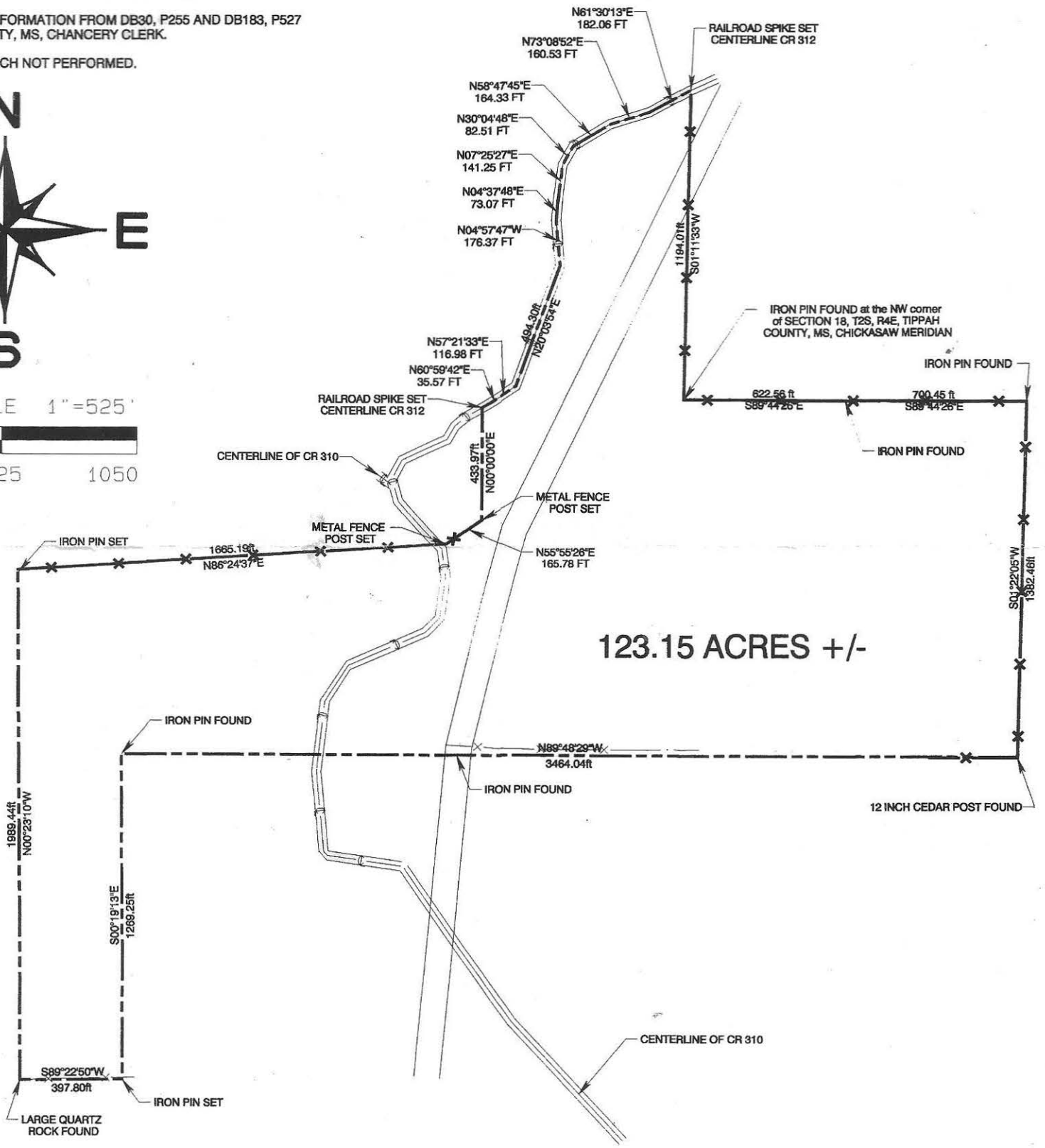
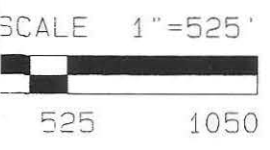


THIS SURVEY IS CLASSIFIED A CLASS B SURVEY.

TRUE NORTH IS BY SOLAR OBSERVATION.

FOR MORE INFORMATION FROM DB30, P255 AND DB183, P527
TIPPAH COUNTY, MS, CHANCERY CLERK.

DEED SEARCH NOT PERFORMED.



123.15 ACRES +/-

IRON PIN FOUND at the NW corner
of SECTION 18, T2S, R4E, TIPPAH
COUNTY, MS, CHICKASAW MERIDIAN

1989.44ft
N00°23'10"W

S00°19'13"E
1289.25ft

S89°22'50"W
397.80ft

1665.19ft
N86°24'37"E

433.97ft
N00°00'00"E

N55°55'26"E
165.78 FT

N89°48'29"W
3464.04ft

S01°22'05"W
1332.46ft

N57°21'33"E
116.98 FT

N60°59'42"E
35.57 FT

N04°57'47"W
176.37 FT

N04°37'48"E
73.07 FT

N07°25'27"E
141.25 FT

N30°04'48"E
82.51 FT

N58°47'45"E
164.33 FT

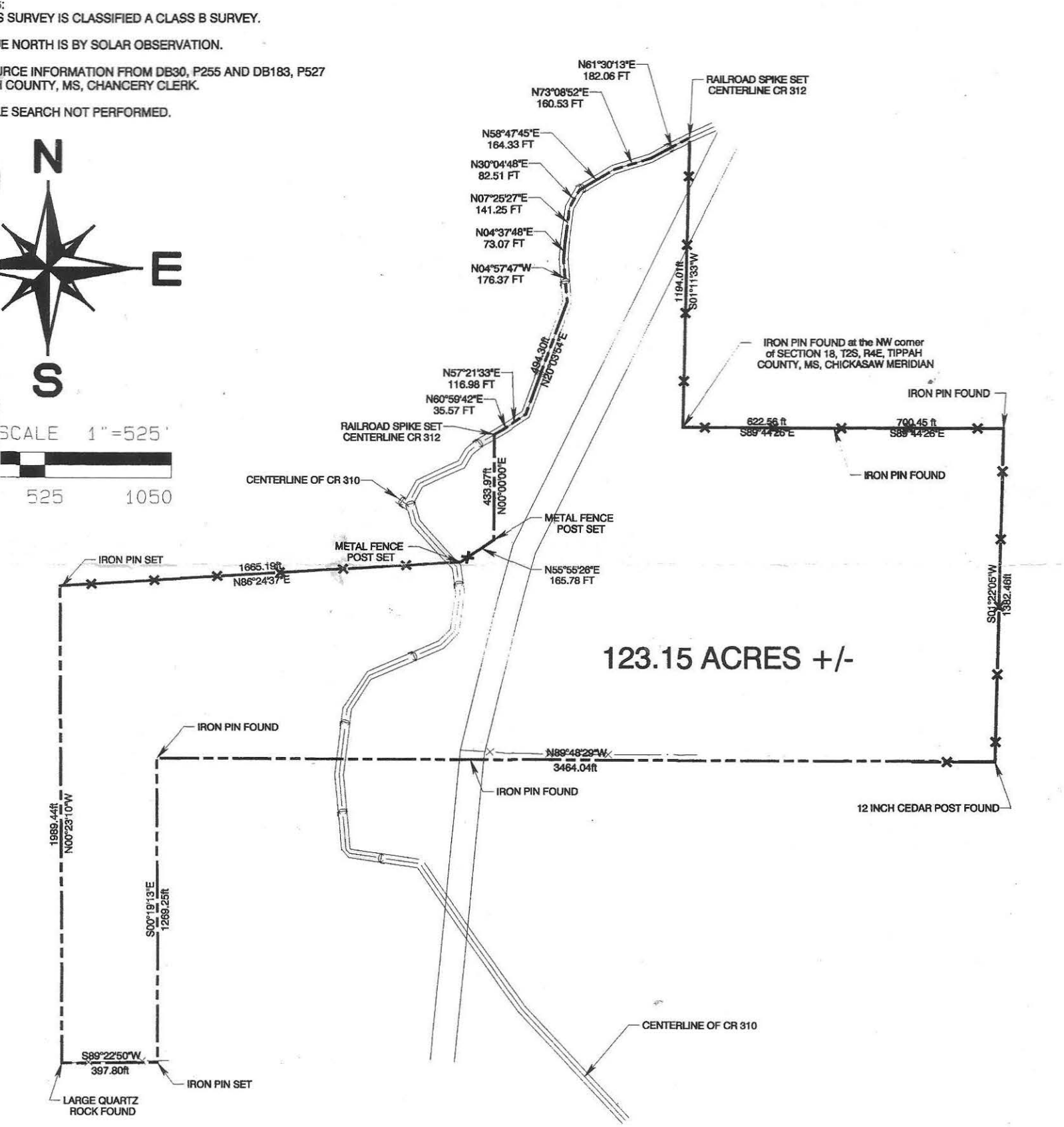
N73°08'52"E
160.53 FT

N61°30'13"E
182.06 FT

1194.01ft
S01°11'33"W

622.56 ft
S89°44'26"E

700.45 ft
S89°44'26"E



123.15 acres +/-
Tippah County, Mississippi

**INDEXING INSTRUCTIONS: Southeast Quarter, Section 12, Township 2 South, Range 3 East
Northeast Quarter, Section 13, Township 2 South, Range 3 East
Northwest Quarter, Section 18, Township 2 South,**

Range 4 East

Commencing and Beginning at an iron pin found at the Northwest corner Section 18, Township 2 South, Range 4 East, Tippah County, Mississippi, Thence, run South 89 degrees 44 minutes 26 seconds East a distance of 622.56 feet along an old fence to an iron pin found. Thence, run South 89 degrees 44 minutes 26 seconds East along an old fence a distance of 700.45 feet to an iron pin found. Thence, run South 01 degrees 22 minutes 05 seconds West a distance of 1382.46 feet to a 12 inch cedar post found. Thence, run North 89 degrees 48 minutes 29 seconds West a distance of 525.28 feet along the north boundary of the Rod Colom tract. Thence, run North 89 degrees 48 minutes 29 seconds West a distance of 447.94 feet along the north boundary of the Mary Joyce Rainer tract. Thence, run North 89 degrees 48 minutes 29 seconds West a distance of 447.94 feet along the north boundary of the Onie Mae Rainer tract. Thence, run North 89 degrees 48 minutes 29 seconds West a distance of 758.51 feet along the north boundary of the Mary Joyce Rainer tract. Thence, run North 89 degrees 48 minutes 29 seconds West a distance of 1384.07 feet along the north boundary of the Lee Anthony Foote tract to an iron pin found. Thence, run South 00 degrees 19 minutes 13 seconds East a distance of 1269.25 feet along the West boundary of the Lee Anthony Foote tract to an iron pin set. Thence, run South 89 degrees 22 minutes 50 seconds West a distance of 397.80 feet to a large quartz rock. Thence, run North 00 degrees 23 minutes 10 seconds West a distance of 1989.44 feet to an iron pin set by a fence. Thence, run North 85 degrees 24 minutes 37 seconds East along said fence and an agreed line 1665.19 feet to a metal fence post set on the East side of CR 310. Thence, continuing along said agreed line, run North 55 degrees 55 minutes 26 seconds East a distance of 165.78 feet to a metal fence post set. Thence, continuing along agreed line, run North 433.97 feet to a railroad spike set on the centerline of CR 312. Thence, following the course of the centerline of CR 312 North 60 degrees 59 minutes 42 seconds East 35.57 feet, North 57 degrees 21 minutes 33 seconds East 116.98 feet, North 20 degrees 03 minutes 54 seconds East 494.30 feet, North 04 degrees 57 minutes 47 seconds West 176.37 feet, North 04 degrees 37 minutes 48 seconds East 73.07 feet, North 07 degrees 25 minutes 27 seconds East 141.25 feet, North 30 degrees 04 minutes 48 seconds East 82.51 feet, North 58 degrees 47 minutes 45 seconds East 164.33 feet, North 73 degrees 08 minutes 52 seconds East 160.53 feet, North 61 degrees 30 minutes 13 seconds East 182.06 feet to a railroad spike set on the centerline of CR 312. Thence, leaving the centerline of said CR 312 and thence, run South 01 degrees 11 minutes 33 seconds West a distance of 1194.01 feet to an iron pin found and Point of Beginning. This tract being 123.15 acres, more or less, and lying in the Northwest Quarter of Section 18, Township 2 South, Range 4 East, the Southeast Quarter of Section 12, Township 2 South, Range 3 East and the Northeast Quarter of Section 13, Township 2 South, Range 3 East in Tippah County, Mississippi.

Subject to the right-of-way of Tippah County Roads 312 and 310 and to a TVA power line easement.



Randy P. Boyd