

**32 ACRES RESIDENTIAL  
DEVELOPMENT SITE AT  
LAKE BELLE**  
32 +/- Acres  
Polk County, FL  
**\$800,000**

**NATIONAL  
LAND  
REALTY®**



**NATIONAL  
LAND  
REALTY®**

National Land Realty  
141 5th Street NW  
Suite 202  
Winter Haven, FL 33881  
[www.NationalLand.com](http://www.NationalLand.com)



**Charles C (Squire) Smith, ALC**  
Office: 863.293.5600  
Cell: 863.559.0307  
Fax: 864.331.1610  
[Squire@NationalLand.com](mailto:Squire@NationalLand.com)

The information herein is from sources deemed reliable, however the accuracy is not guaranteed.  
National Land Realty assumes no liability for error, omissions or investment results.





**OVERVIEW:**

32 gross acres residential development site ready for development and features State Road 17 frontage with zoning for lakefront lots.

**PARCEL #/ID:** 273011000000022060, 273011000000022050

**TAXES:** (Call Agent for Details)

**ADDRESS:**

Scenic Hwy South  
Lake Wales, FL 33853

**LOCATION:**

From US 27 and SR 60, proceed east 1.2 miles to Scenic Hwy (SR 17). From SR 60 and Scenic Hwy proceed southbound on Scenic Hwy 8 tenths of a mile, Subject property on your right. From US 27 and Hunt Brothers Road, proceed east 3/4 mile to Scenic Hwy (SR 17), then northbound on Scenic 5 tenths of a mile, Subject property on your left.

**ACREAGE BREAKDOWN:**

27 usable acres





## PROPERTY HIGHLIGHTS:

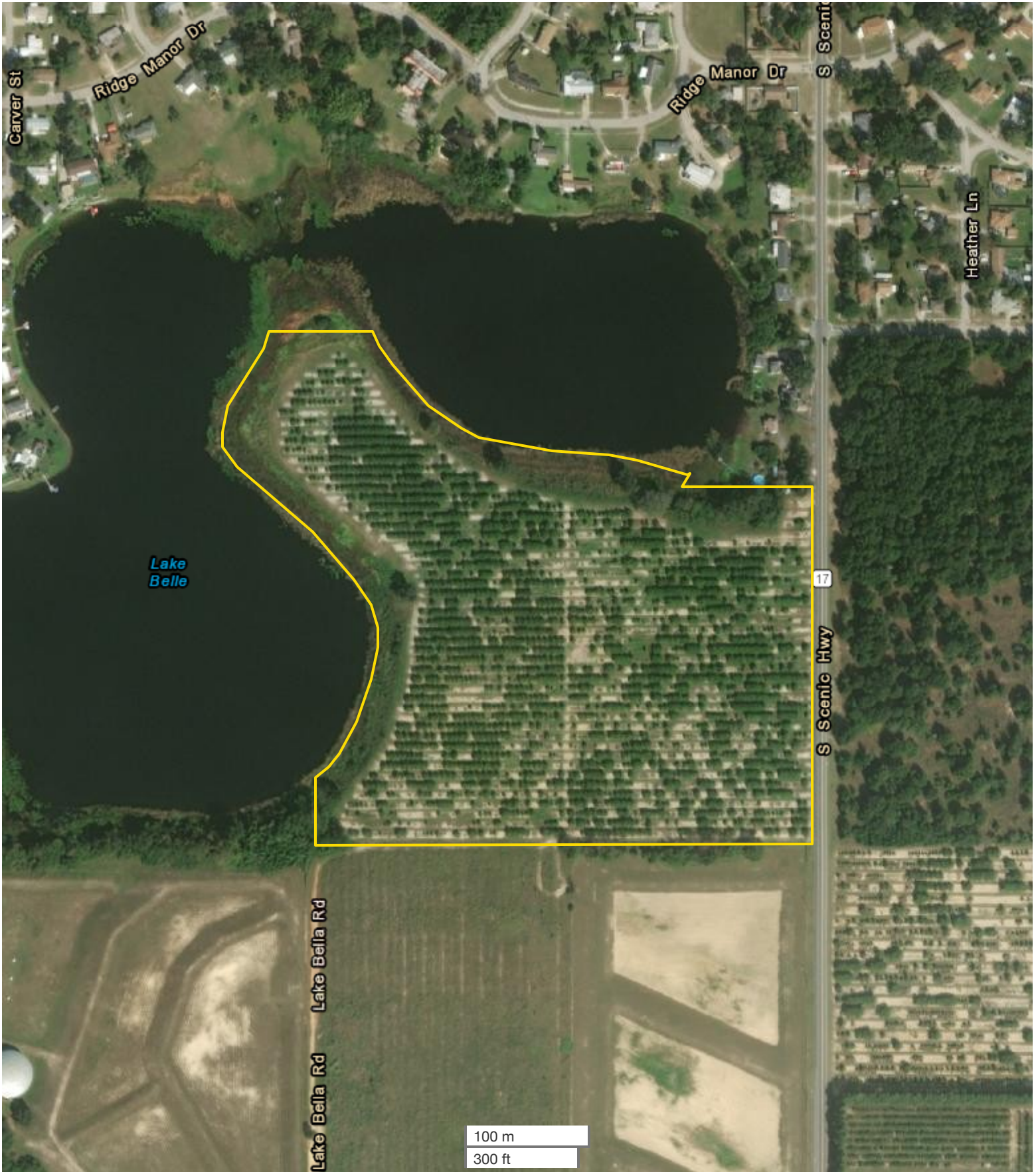
- 27 usable acres 5 minutes south of downtown Lake Wales, FL
- Subject property within the Lake Wales city limits
- 2,600 MOL feet frontage on Lake Belle ideal for lakefront living
- Approved for single family residential lots
- Water and Sewer available from City of Lake Wales Well drained ridge soils
- Close proximity to restaurants and shopping
- 10 minutes to the Eagle Ridge Mall

## VIEW FULL LISTING:

[www.nationalland.com/viewlisting.php?listingid=1389347](http://www.nationalland.com/viewlisting.php?listingid=1389347)





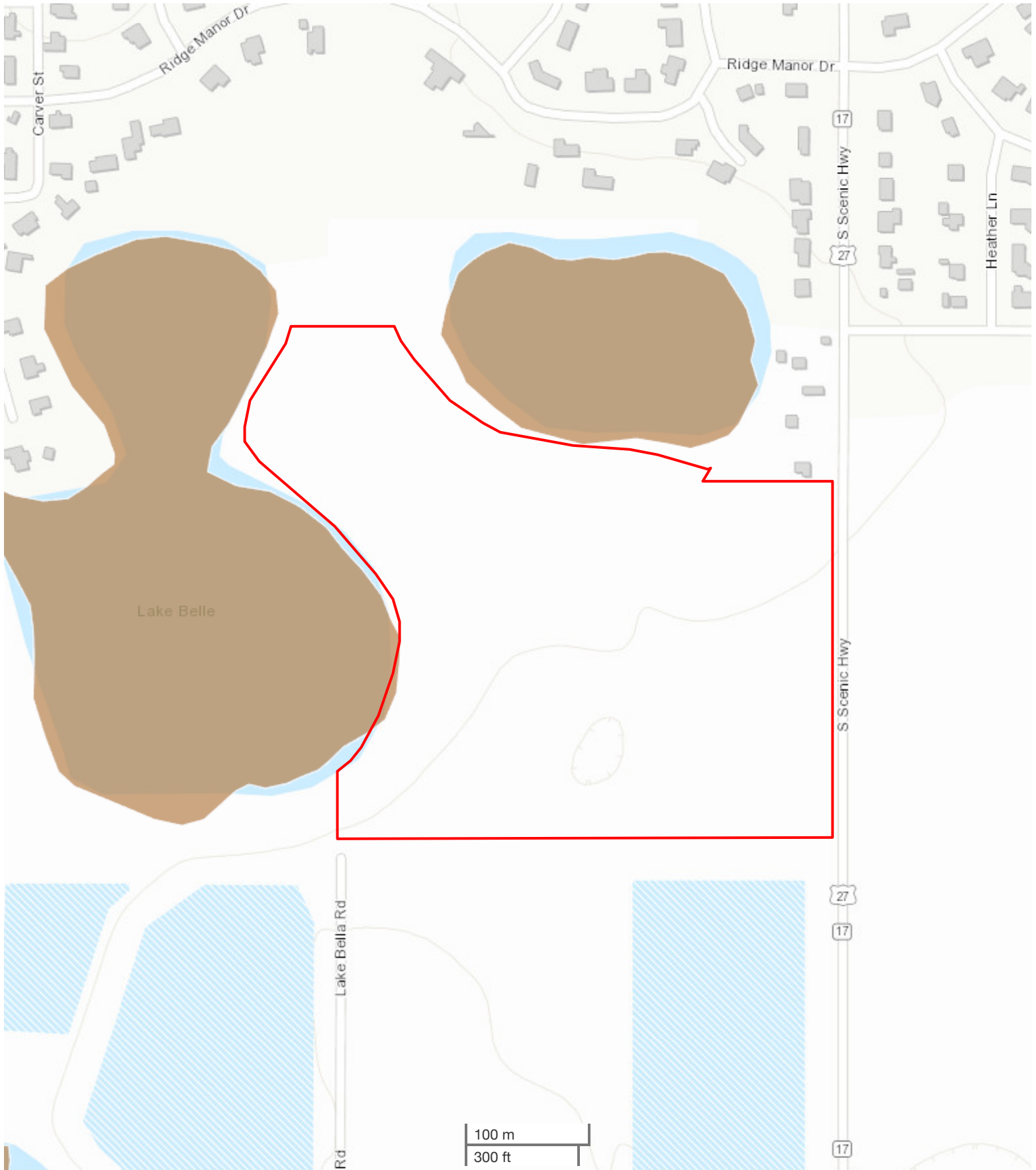


All boundary lines noted in pictures, aerials or maps should be considered estimates and not relied on as legal documents or descriptions.









All boundary lines noted in pictures, aeriels or maps should be considered estimates and not relied on as legal documents or descriptions.