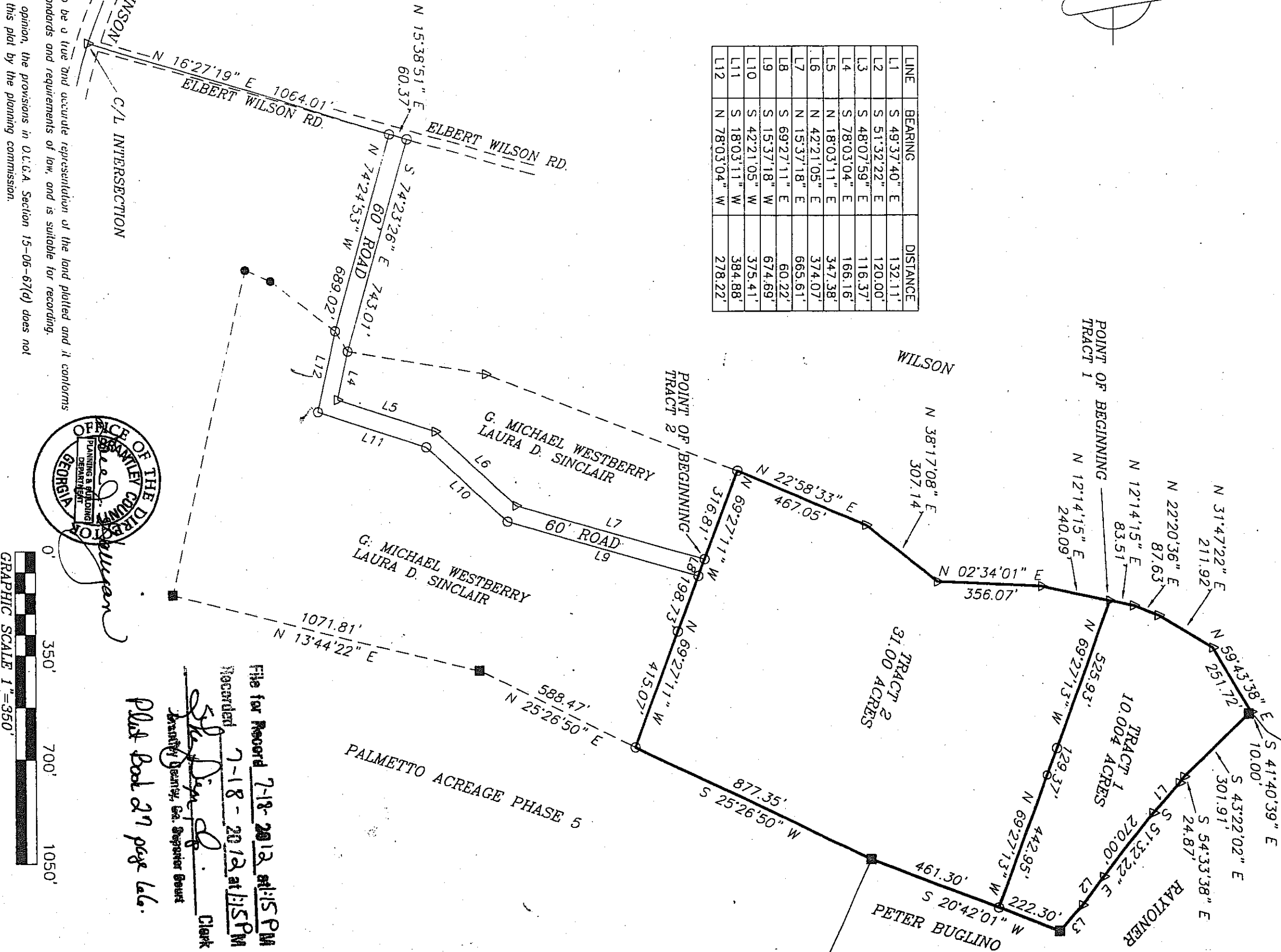
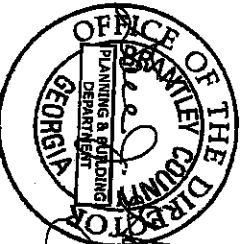


LINE	BEARING	DISTANCE
L1	S 49°37'40" E	132.11'
L2	S 51°32'22" E	120.00'
L3	S 48°07'59" E	116.37'
L4	S 78°03'04" E	166.16'
L5	N 18°03'11" E	347.38'
L6	N 42°21'05" E	374.07'
L7	N 15°37'18" E	665.61'
L8	S 69°27'11" E	60.22'
L9	S 15°37'18" W	674.69'
L10	S 42°21'05" W	375.41'
L11	S 18°03'11" W	384.88'
L12	N 78°03'04" W	278.22'



I certify this plat to be a true and accurate representation of the land platted and it conforms to the minimum standards and requirements of law, and is suitable for recording.
I certify that in my opinion, the provisions in O.C.G.A. Section 15-06-67(d) does not require approval of this plat by the planning commission.
Everett Tomberlin, the Land Surveyor whose seal is affixed hereto does not guarantee that all assessments which may affect this property are shown.



File for Record **7-18-2012** at **1:15 PM**
 Recorded **7-18-2012** at **1:15 PM**
Stephany Gentry
 Stephany Gentry, Co. Superior Court Clerk
 Plat Book 27 page 66.

Pursuant to the Development Code of _____ County, Georgia, all requirements have been fulfilled and this plat is approved.
 This _____ Day of _____ 20____
 Codes Director, _____ County, Georgia

SURVEY FOR:
EASTERN PROPERTY SERVICES INC.
 Land Lot: _____ G.M.D.: 149380 Survey Date: 06/07/2012 Date Drawn: 06/07/2012
 Land Dist.: _____ City: _____ Drawn By: ET JOB REF. CAMRONOWENS
 County BRANTLEY State: Georgia Scale: 1"=350' Checked By: ET

The field data upon which this plat is based has a closure precision of one foot in _____ feet, and an angular error of _____ per angle point, and was adjusted using the compass rule. This plat has been calculated for closure and has been found to be accurate within one foot in 100,000+ feet.

REFERENCES:
 PLAT: _____
 DEED: _____
 REFERENCES:
 () 5/8" re-bar set
 ● Iron Pin or Pipe Found
 □ Concrete Monument Set
 ■ Concrete Monument Found
 △ Computed Point
 ◆ Land Lot or Legal Tie Point

This plat has been recorded in Plat Book _____ Page _____ in the Office of the Clerk of Superior Court of _____ County, Georgia. This _____ Day of _____ 20____
 Clerk of Superior Court _____

EVERETT TOMBERLIN and ASSOCIATES
 LAND SURVEYING
 EVERETT TOMBERLIN REGISTERED LAND SURVEYOR #2922
 1144 RADIO STATION ROAD
 ALMA, GEORGIA 31510
 PH. 912-632-8034 FAX 912-632-0734

