

**SANITA'S RESIDENTIAL
DEVELOPMENT
PROPERTY**
4.9 +/- Acres
Osceola County, FL
\$925,000

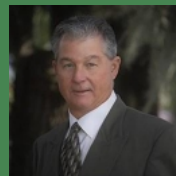
NEW LISTING

**NATIONAL
LAND
REALTY®**



**NATIONAL
LAND
REALTY®**

National Land Realty
141 5th Street NW
Suite 202
Winter Haven, FL 33881
www.NationalLand.com



Tommy Addison
Office: 863.293.5600
Cell: 863.557.5035
Fax: 864.331.1610
taddison@nationalland.com

The information herein is from sources deemed reliable, however the accuracy is not guaranteed.
National Land Realty assumes no liability for error, omissions or investment results.



Park Square
Homes Segovia

Campbell Cove

Subject

OVERVIEW:

This is one of the last remaining development parcels in the Buenaventura Lakes area of northern Osceola County/Kissimmee. With a Future Land Use of Low Density Residential, up to 40 units could be developed on this site. This infill property has easy access to the Osceola Parkway, Florida's Turnpike and the 417 making Orlando a short commute. With Commercial and retail businesses within walking distance, this site is ideal for a single family detached or attached development, with townhouses also being a possible option.

PARCEL #/ID: 05-25-30-0000-0070-0000

TAXES: \$3,673/year (2019)

ADDRESS:

2700 Myers Road
Kissimmee, FL 34743

ACREAGE BREAKDOWN:

+/- 4.9 upland acres



PROPERTY HIGHLIGHTS:

· Future Land Use (FLU): Low Density Residential (LDR)
up to 8 develop-able units per acre

Zoning: Agricultural Development and Conservation (AC)
· Water and Sewer: available

(Available capacity to be verified by buyer)

· Unincorporated Osceola County
· 6 minute drive to the 417 toll road

7 minute drive to the Florida Turnpike

12 minute drive to the Orlando International Airport

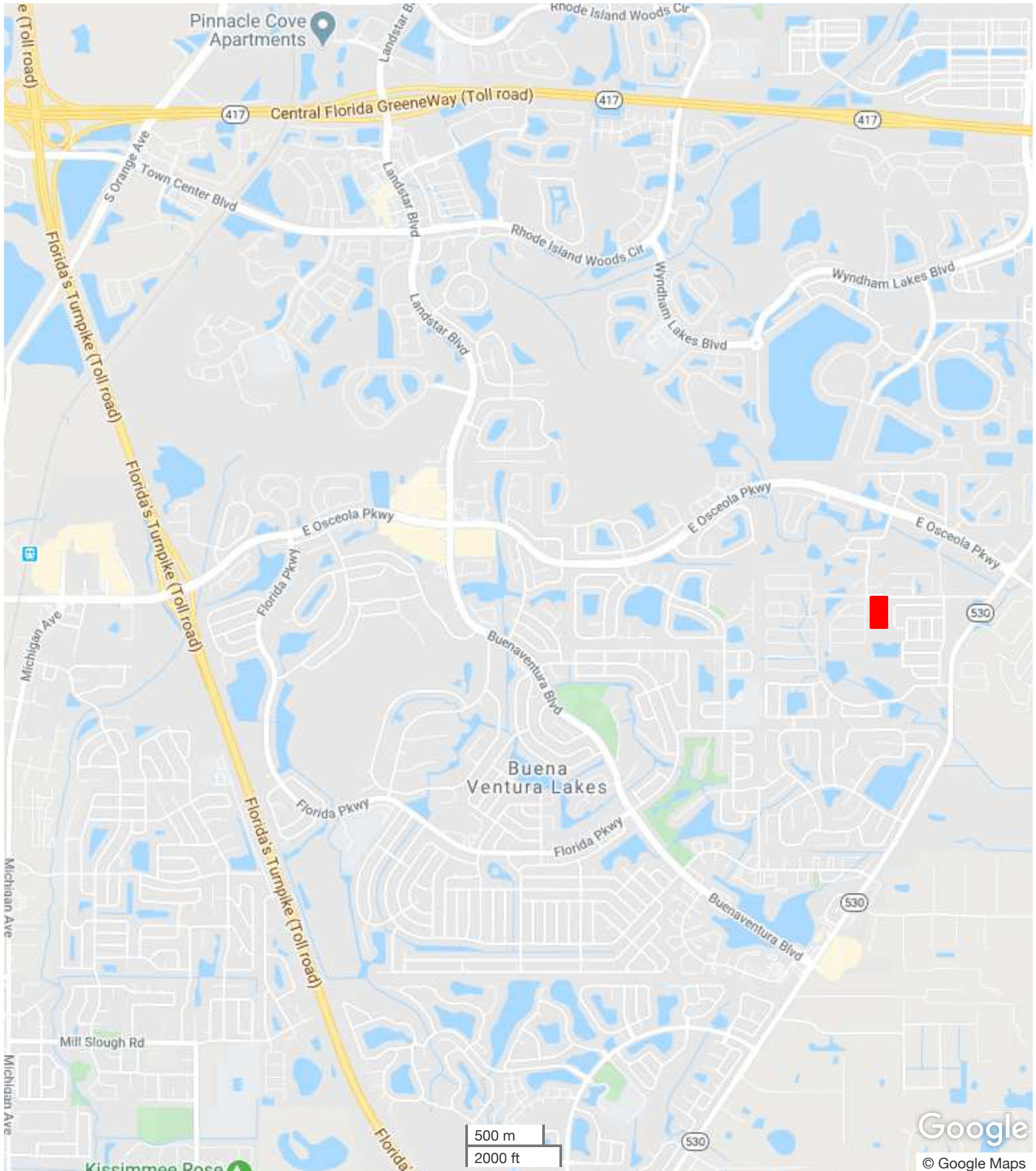
VIEW FULL LISTING:

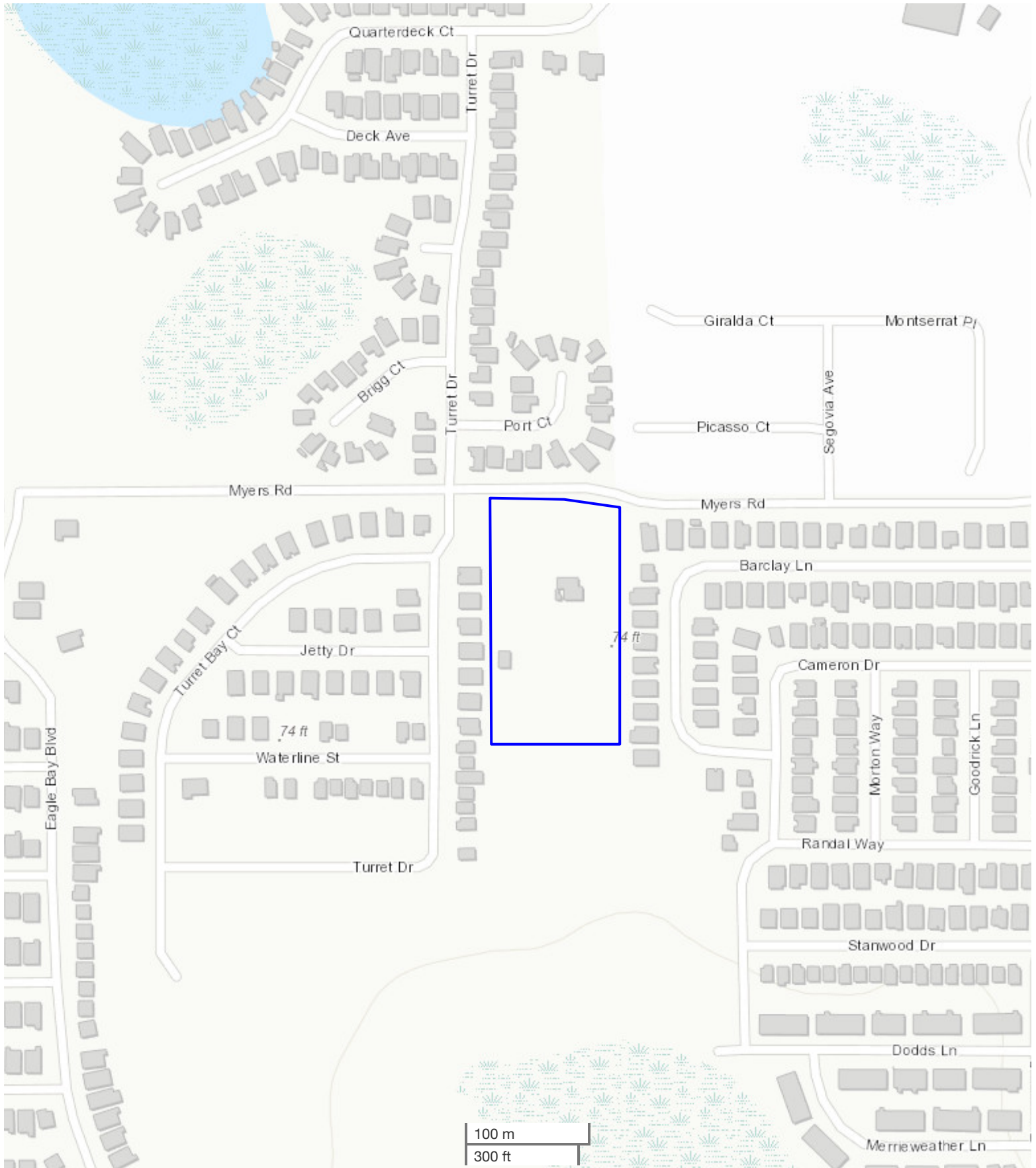
www.nationalland.com/viewlisting.php?listingid=1432936





All boundary lines noted in pictures, aerials or maps should be considered estimates and not relied on as legal documents or descriptions.





All boundary lines noted in pictures, aeriels or maps should be considered estimates and not relied on as legal documents or descriptions.