

**14± ACRES ON LAKE  
DELL, DUNDEE FL**  
14 +/- Acres  
Polk County, FL  
**\$600,000**

**NATIONAL  
LAND  
REALTY®**



**National Land Realty**  
141 5th Street NW  
Suite 202  
Winter Haven, FL 33881  
[www.NationalLand.com](http://www.NationalLand.com)



**Chip Fortenberry, ALC, MBA**  
Office: 863.293.5600  
Cell: 863.673.9368  
Fax: 864.331.1610  
[Cfortenberry@NationalLand.co](mailto:Cfortenberry@NationalLand.co)



**Charles C (Squire) Smith, ALC**  
Office: 863.293.5600  
Cell: 863.559.0307  
Fax: 864.331.1610  
[Squire@NationalLand.com](mailto:Squire@NationalLand.com)

The information herein is from sources deemed reliable, however the accuracy is not guaranteed.  
National Land Realty assumes no liability for error, omissions or investment results.





**OVERVIEW:**

We are offering 14 acres of lakeside land for sale in Dundee, FL located on Lake Dell. This property has residential use development potential. The zoning is multi-family residential and future land use is medium density residential. Lake Dell is a public lake that provides a great source of entertainment for the surrounding area.

**PARCEL #/ID:** 272828846000000010

**TAXES:** \$9,642/year (2020)

**ADDRESS:**

Old Highway 542  
Dundee, FL 33838

**LOCATION:**

Near the lake is a regional shopping mall, restaurants, Home Depot, Legoland, and the Chain of Lakes. Disney and other Orlando attractions are only 45 minutes away.

**ACREAGE BREAKDOWN:**

14 +/- acres





## PROPERTY HIGHLIGHTS:

- City Water Available
- Sewer is 200 ft Away
- Zoning: Multi-Family Residential 12 units per acre  
Future Land Use: Medium Density Residential
- Lakeside Development Opportunity
- Conveniently Located to Winter Haven, Haines City, and I-4
- Wooded Property
- Previously Utilized as a Grove

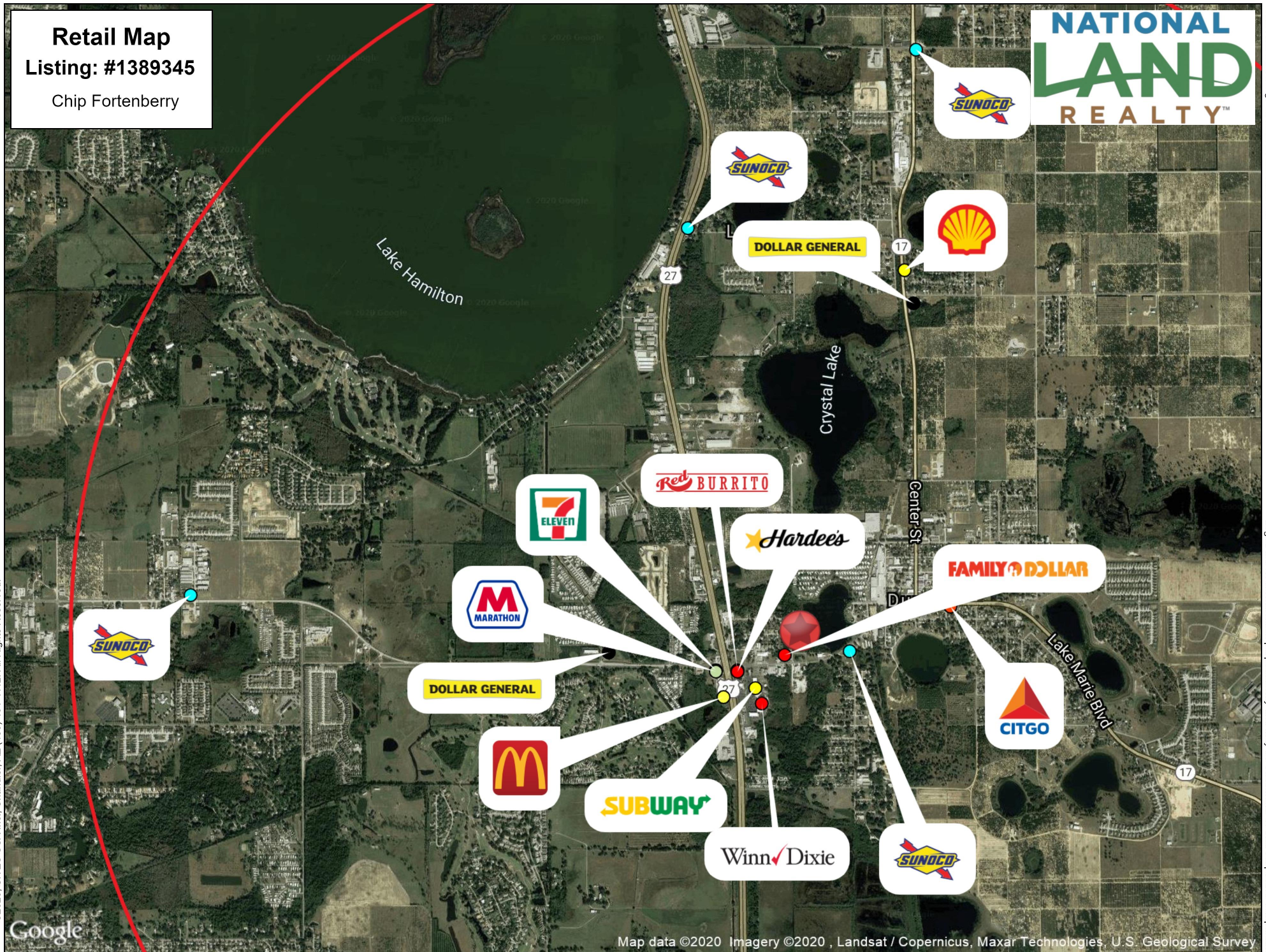
## VIEW FULL LISTING:

[www.nationalland.com/viewlisting.php?listingid=1389345](http://www.nationalland.com/viewlisting.php?listingid=1389345)





**Retail Map**  
Listing: #1389345  
Chip Fortenberry



©2020, SITES USA Inc., Chandler, AZ (480) 491-1112. All Rights Reserved.

Google

Map data ©2020 Imagery ©2020, Landsat / Copernicus, Maxar Technologies, U.S. Geological Survey

This map was produced using data from private and government sources deemed to be reliable. The information herein is provided without representation or warranty

Lat: 28.02974 Long: -81.63879 Zoom: 5.17 mi

Logos are for identification purposes only and may be trademarks of their respective companies.