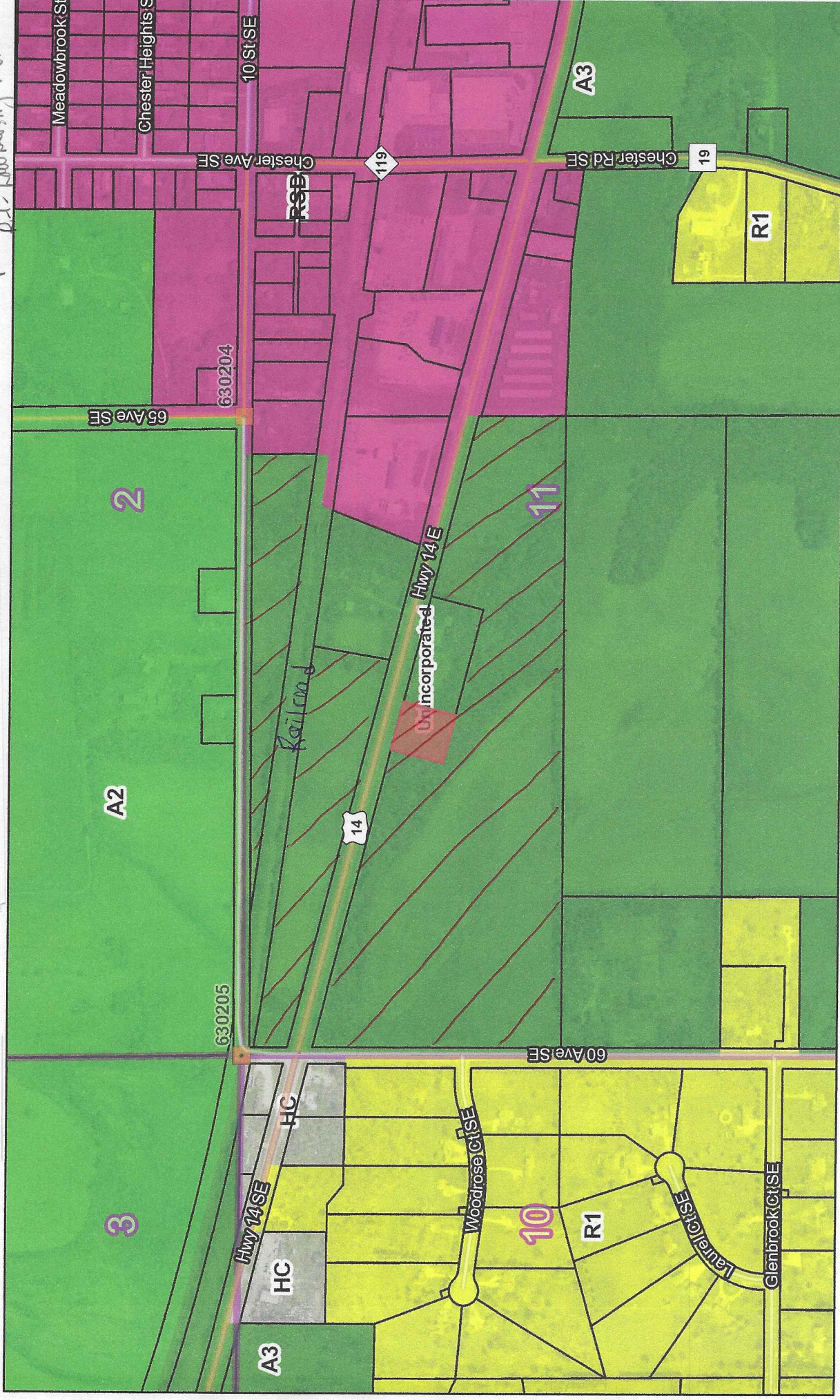
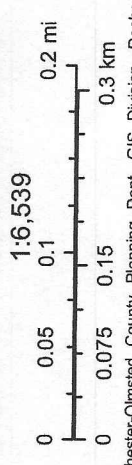


1.26 Ac PID 63.11.21.035691

RSD - Rural Service Center District
P.D. - Low Density Residential



December 12, 2018



Rochester-Olmsted County Planning Dept. GIS Division, Roche
 Utilities and Rochester Public Works Dept.
 Rochester-Olmsted County Planning Dept.
 Rochester-Olmsted County GIS

Zoning M