

**13± ACRE GROVE WITH
POTENTIAL
RESIDENTIAL
DEVELOPMENT USE**
13 +/- Acres
Polk County, FL
\$455,000

**NATIONAL
LAND
REALTY®**



**NATIONAL
LAND
REALTY®**

National Land Realty
141 5th Street NW
Suite 202
Winter Haven, FL 33881
www.NationalLand.com



Erin Carden, CCIM
Office: 863.293.5600
Cell: 863.604.0564
Fax: 834.331.1610
Ecarden@NationalLand.com

The information herein is from sources deemed reliable, however the accuracy is not guaranteed.
National Land Realty assumes no liability for error, omissions or investment results.



OVERVIEW:

13 plusmn; Acres Grove with Potential Residential Development with approx. 400 feet of access on Rankin Road. Polk County is a trustee of the right of way easement south of property to continue Rankin Road through to Buckeye Loop Road. Water from the City of Winter Haven is approximately 1800 feet from site. Country Estates Subdivision with RL-2 land use is across the street.

PARCEL #/ID: 262814532500003080, 262814532500003090

TAXES: (Call Agent for Details)

ADDRESS:

0 Rankin Rd
Winter Haven, FL 33881

LOCATION:

Located on Rankin Road just off Lake Buckeye Drive. The property sits north east of Winter Haven Christian School and Buckeye Point Subdivision.

ACREAGE BREAKDOWN:

13 +/- acres



PROPERTY HIGHLIGHTS:

- Current Density RL-1, minimum lots 40,000sf
- RL-2 and RL-3 land uses properties nearby
- 400 plusmn; Feet Access on Rankin Road
- Income producing grove in place

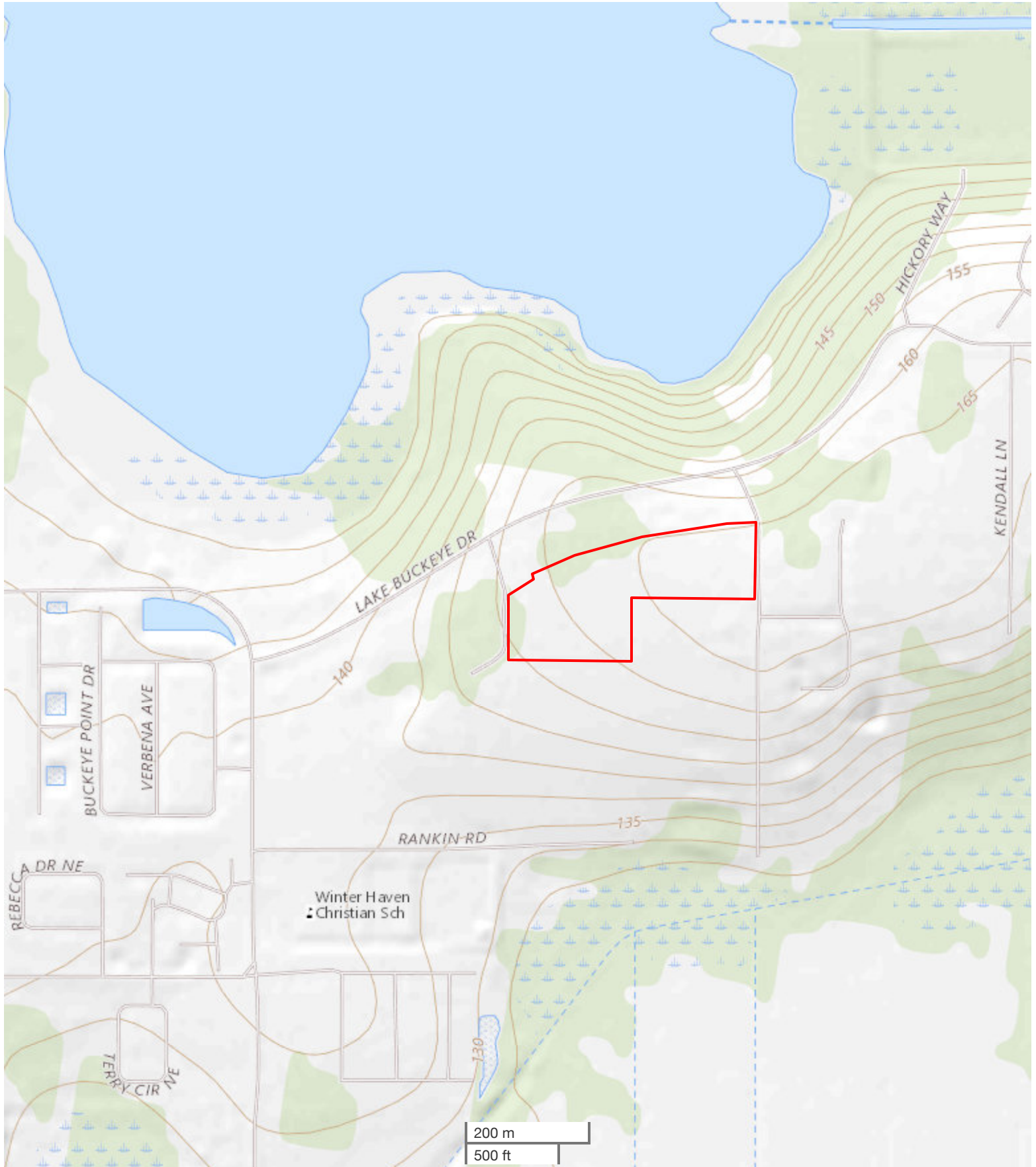
VIEW FULL LISTING:

www.nationalland.com/viewlisting.php?listingid=1389659





All boundary lines noted in pictures, aerials or maps should be considered estimates and not relied on as legal documents or descriptions.



All boundary lines noted in pictures, aerials or maps should be considered estimates and not relied on as legal documents or descriptions.