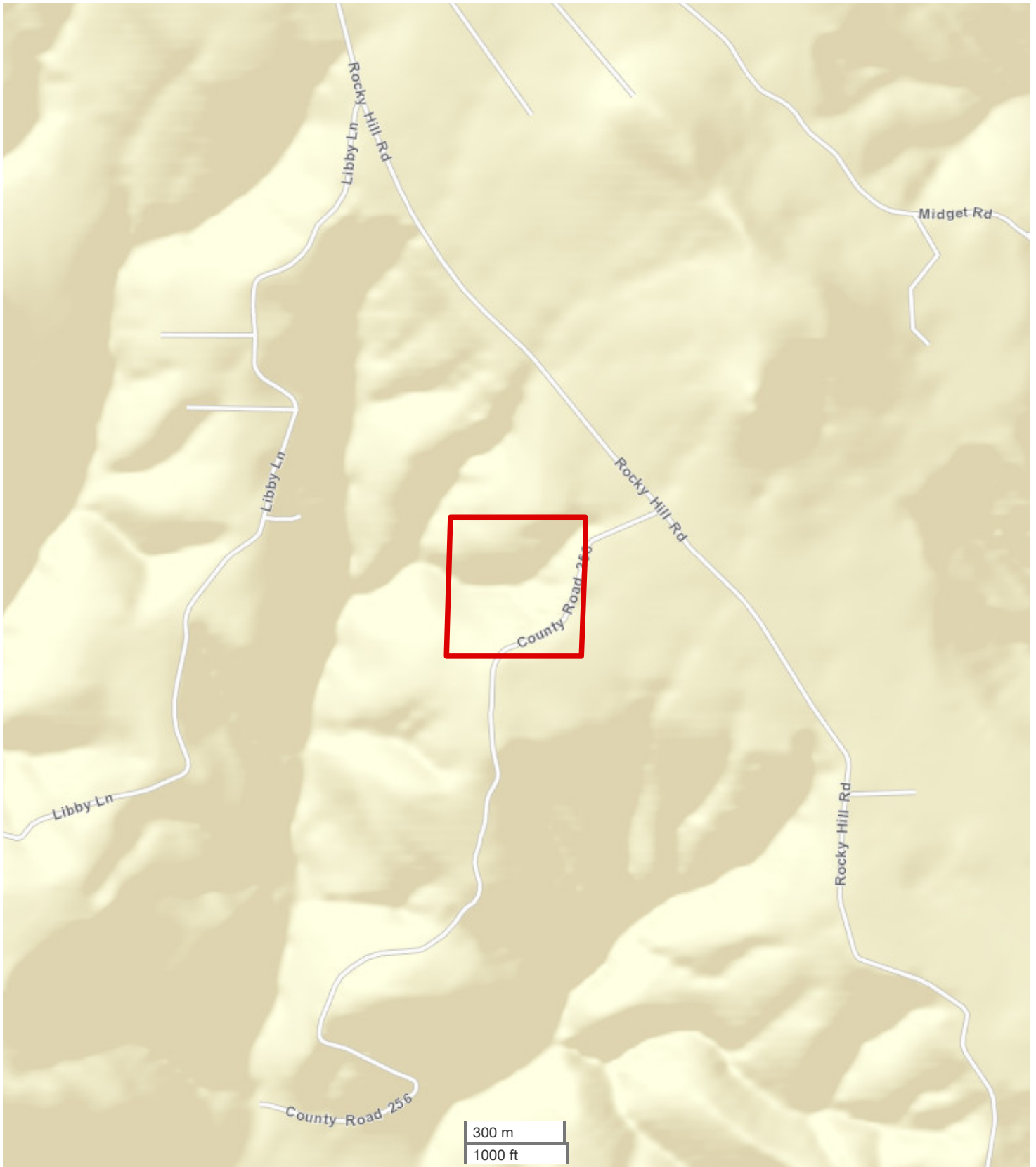




JERAMY STEPHENS, ALC  
Broker/Partner, Little Rock, AR Office  
Cell: 870-672-3250  
Office: 864-331-1600  
Fax: 501-325-0080  
Jstephens@nationalland.com

40+/- Acres Timberland & Hunting Property  
Van Buren County, AR  
40 +/- Acres (\$1,000/acre)  
\$40,000



All boundary lines noted in pictures, aerials or maps should be considered estimates and not relied on as legal documents or descriptions.