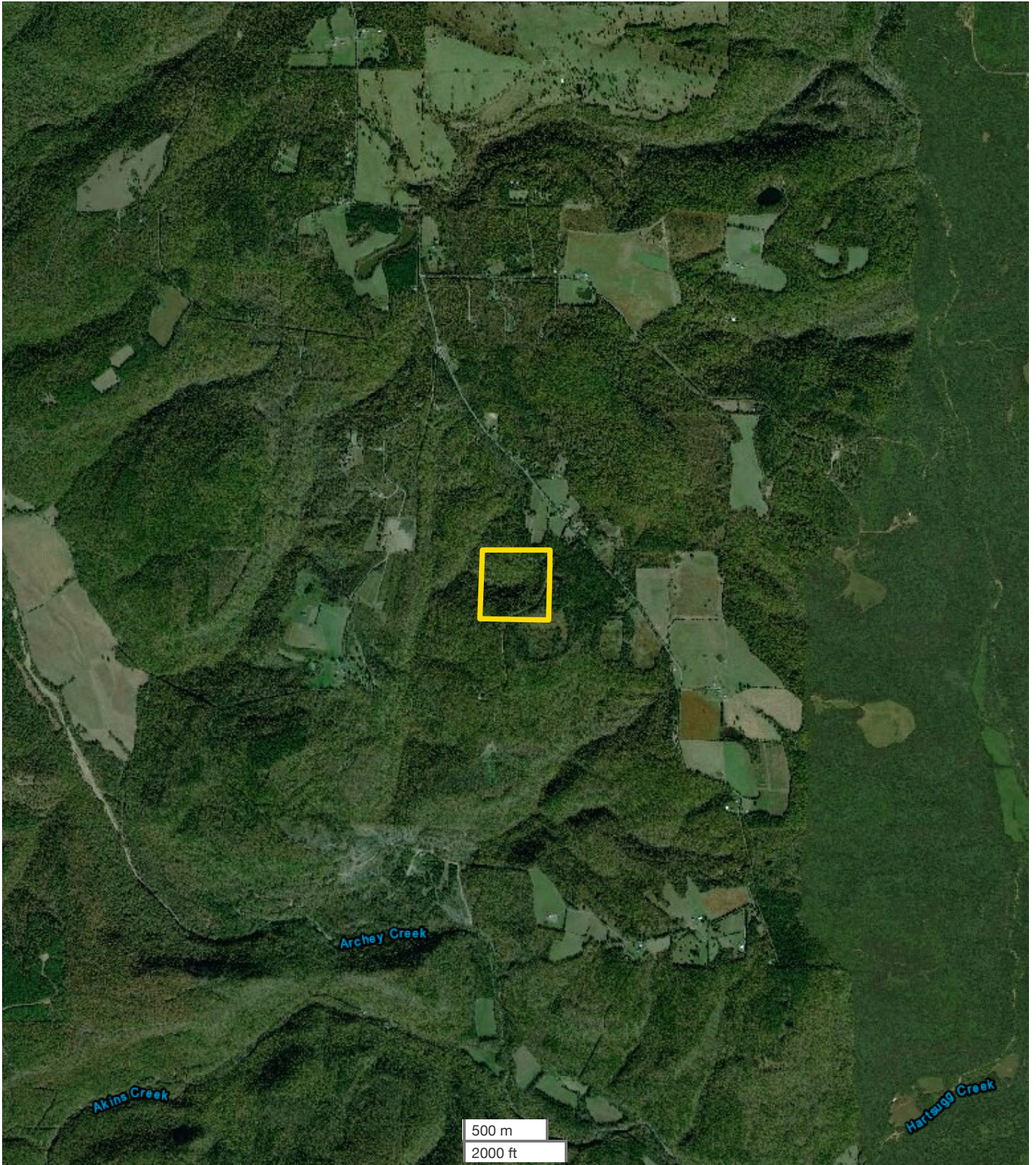




JERAMY STEPHENS, ALC
Broker/Partner, Little Rock, AR Office
Cell: 870-672-3250
Office: 864-331-1600
Fax: 501-325-0080
Jstephens@nationalland.com

40+/- Acres Timberland & Hunting Property
Van Buren County, AR
40 +/- Acres (\$1,000/acre)
\$40,000



All boundary lines noted in pictures, aerials or maps should be considered estimates and not relied on as legal documents or descriptions.