

**A DIAMOND IN THE  
ROUGH**  
**155 +/- Acres**  
**Canadian County, OK**  
**\$987,500**

**NEW LISTING**

**NATIONAL  
LAND  
REALTY®**



**National Land Realty**  
1805 E 8th Street  
Chandler, OK 74834  
[www.NationalLand.com](http://www.NationalLand.com)



**Jeff Danker**  
Office: 855.384.5263  
Cell: 405.229.8458  
Fax: 864.331.1610  
[Jdanker@nationalland.com](mailto:Jdanker@nationalland.com)



**Daniel McVay**  
Office: 855.384.5263  
Cell: 918.223.7780  
Fax: 864.331.1610  
[Dmcvay@nationalland.com](mailto:Dmcvay@nationalland.com)

The information herein is from sources deemed reliable, however the accuracy is not guaranteed.  
National Land Realty assumes no liability for error, omissions or investment results.



**OVERVIEW:**

Truly a diamond in the rough. This 160 acres has so much to offer! Located just a little over a mile south of NW Expressway so it has endless opportunities for development. Property also is some of the best hunting/recreational ground for miles. Big timber, crop fields, creek, ponds...it has it all. Do yourself a favor and schedule an appointment to see this one of a kind gem!!! Piedmont Schools.

**PARCEL #/ID:** 191144-000000-000001

**TAXES:** (Call Agent for Details)

**ADDRESS:**

0 N. Richland Rd  
Piedmont, OK 73078

**LOCATION:**

corner of N Richland Rd and Schein Rd

**ACREAGE BREAKDOWN:**

155 +/- acres



## PROPERTY HIGHLIGHTS:

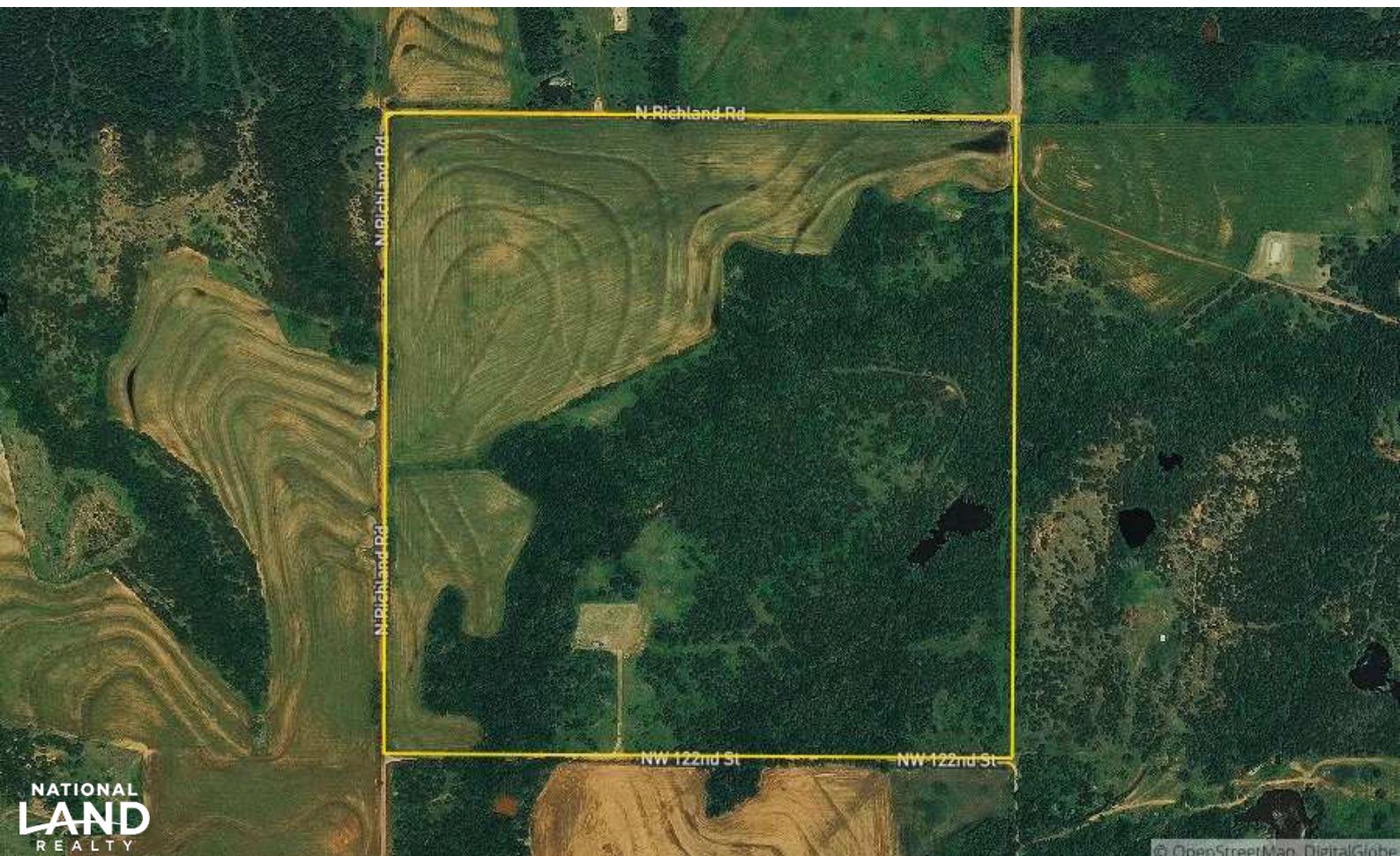
- This property is very secluded with private access.
- Remote rural setting
- A developer's dream.
- Possibilities for recreation and development are boundless
- Highly productive farm ground
- Thick and wooly timber comprised of many mature oaks along with providing ample cover and bedding thickets.
- Large population of deer, turkeys, quail and small game.
- Wildlife haven
- Close to local amenities yet offering a sense of remote privacy.

## LEGAL DESCRIPTION:

T13N R06W S14 SE4 A 1 PT SE BEING SE4 LESS and EXC A STRIP OF LAND 33' WIDE RUNNING THE FULL LENGTH ALONG W SIDE SE4

## VIEW FULL LISTING:

[www.nationalland.com/viewlisting.php?listingid=1362869](http://www.nationalland.com/viewlisting.php?listingid=1362869)







# ed aquifers may help with wa

needs.

And Oklahoma is not just people. Take cattle for instance. According to Troy Marshall with the National Agricultural Statistics Service, a branch of the U.S. Department of Agriculture, Oklahoma has 5.1 million cattle. One cow consumes from 12 to 15 gallons a day, according to Rod Hall, state veterinarian.

Then there's the current oil boom in Oklahoma. Fracking requires water, the amount dependent on the depth of the well among other factors.

A Columbia University study this year shows Oklahoma becoming drier in a long term trend putting increasing stress on demands for water.

However, there may be a solution right under our feet. Nearly

every inch of the state has an underground bedrock aquifer below it. There are 12 major bedrock aquifers and 19 minor ones in the state. Two major aquifers, the Roubidoux and the Vamoosa-Ada, bracket Tulsa to the east and the west, while Oklahoma City sits on top of the Garber-Wellington Aquifer.

An aquifer is not an underground lake. It is an area of water-saturated soil or rock below ground. Probably the state's most famous aquifer is the Ogallala Panhandle, which is an extension of the vast Ogallala Aquifer that extends from Nebraska deep into West Texas.

It's the principal source of water for the Oklahoma Panhandle,

## Oklahoma's major aquifers



## LARGEST OKLAHOMA BEDROCK

1. Ogallala Panhandle:	5,125 square miles	4. Garber-Wellington:	2,891 square miles
2. Roubidoux:	4,638 square miles	5. Rush Springs:	2,891 square miles
3. Artesian:	4,280 square miles		

• See *Aquifers*, page E6

