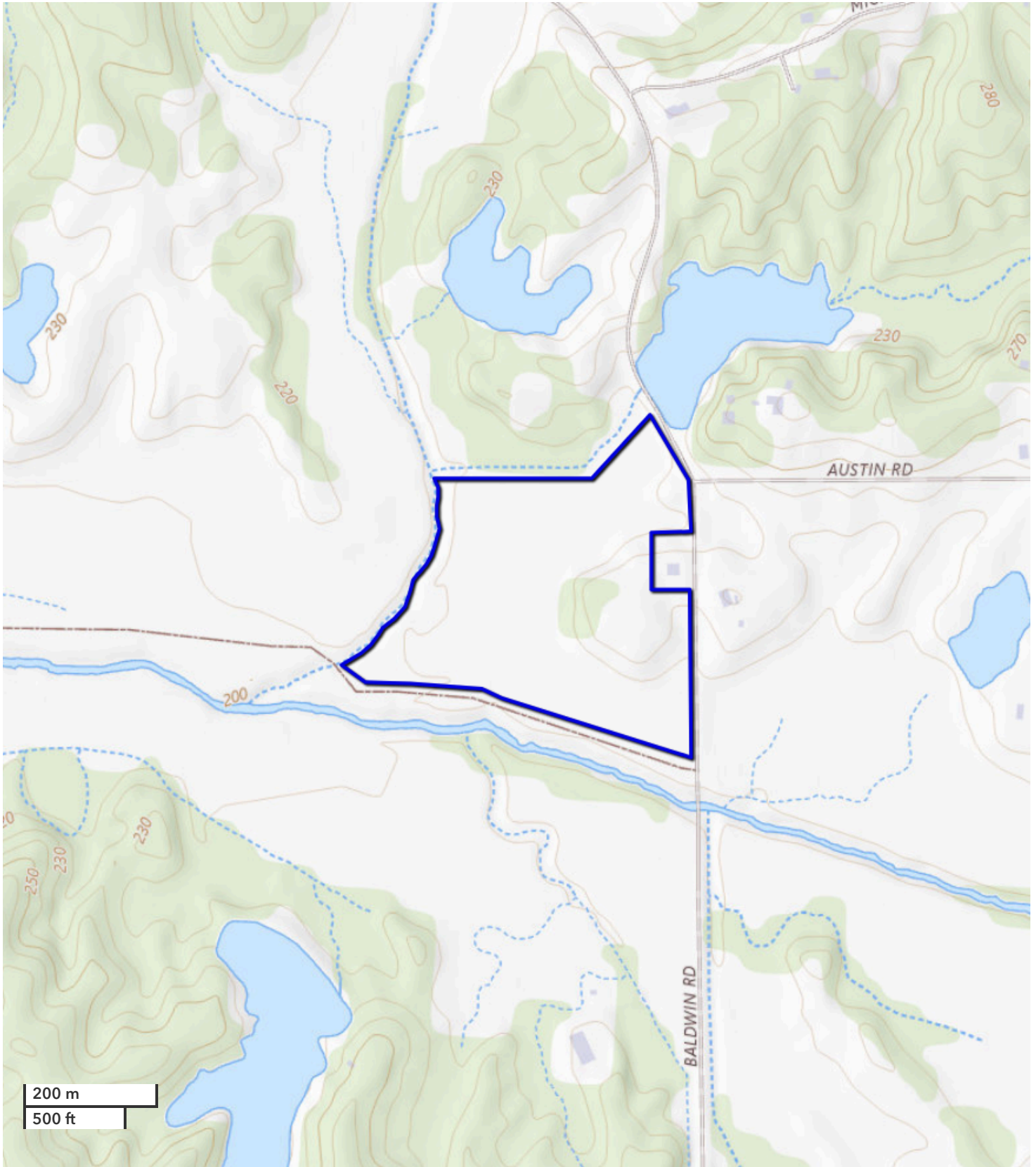




LOUIS HOLBROOK  
Land Broker  
lholbrook@nationalland.com  
Mobile: 901-355-2988  
Office: 901-676-8556  
Fax: 864-331-1610

Johnson Creek Residential Acreage  
DeSoto County, MS  
37 +/- Acres



*All boundary lines noted in pictures, aerials or maps should be considered estimates and not relied on as legal documents or descriptions.*