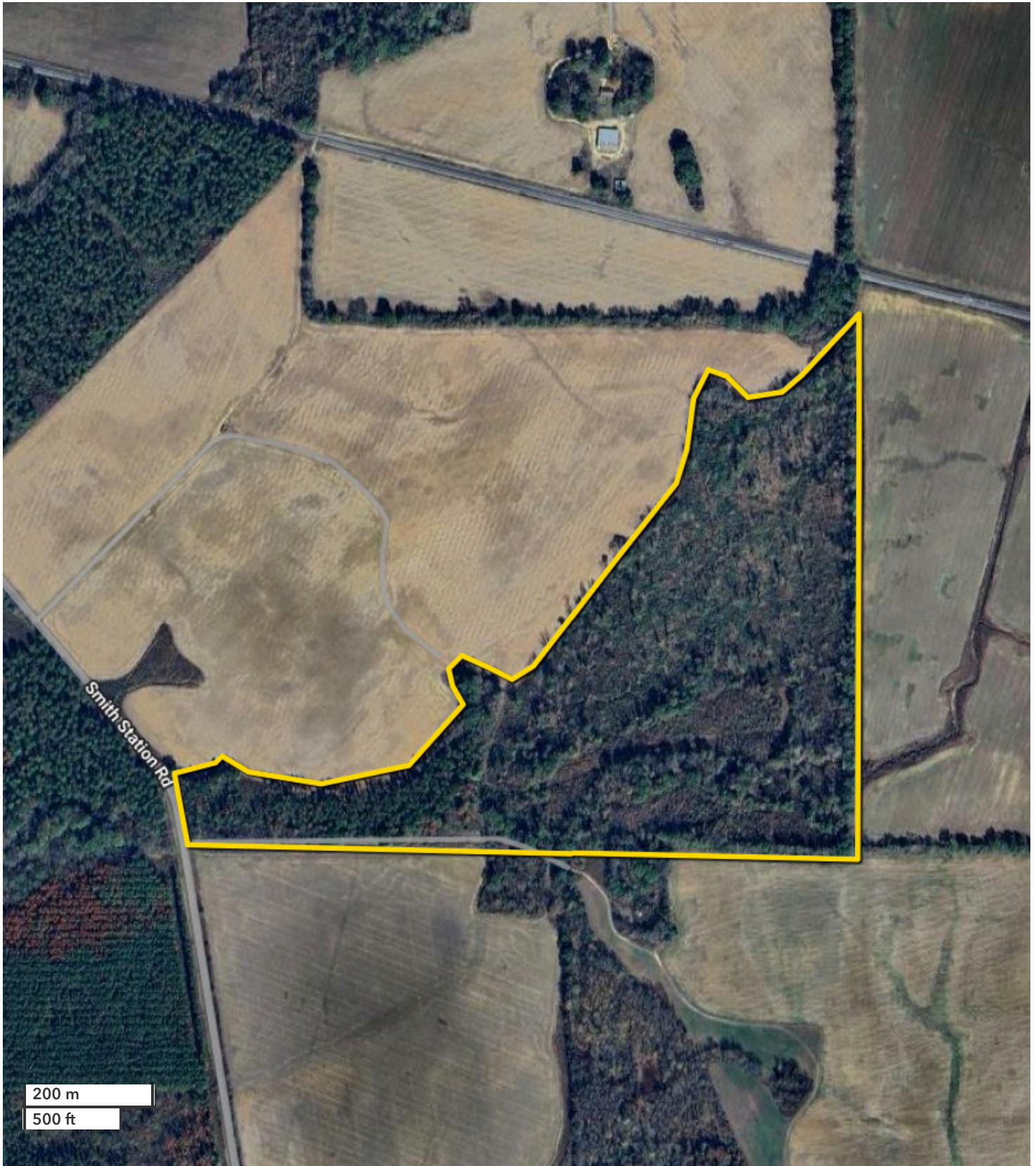




GREG CLEARMAN
Land Professional
gclearman@nationalland.co
Mobile: 601-408-0019
Office: 601-895-1956
Fax: 601-878-5424

JOSEPH PORTER
Broker Associate
jporter@nationalland.com
Mobile: 601-937-6613
Office: 601-844-7439
Fax: 864-331-1610

Hunting Land in the Big Black River Basin Hinds Co
Hinds County, MS
88 +/- Acres



200 m
500 ft

All boundary lines noted in pictures, aerials or maps should be considered estimates and not relied on as legal documents or descriptions.