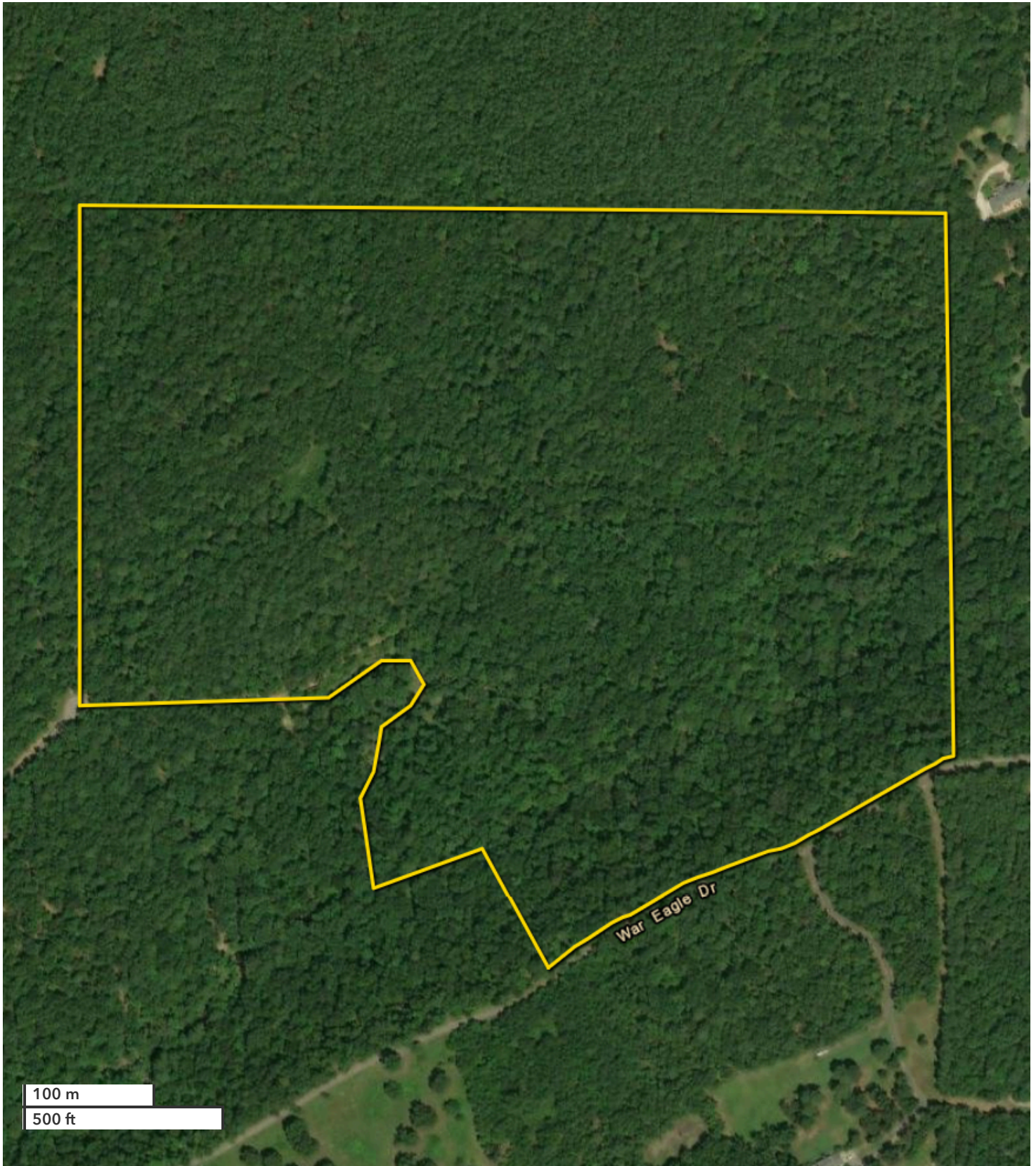




BRETT HARDEN  
Land Broker  
bharden@nationalland.com  
Mobile: 205-835-9922  
Office: 205-548-1682  
Fax: 864-331-1610

Shades Falls Homesites, Timber & Hunting  
Jefferson County, AL  
71 +/- Acres



*All boundary lines noted in pictures, aerials or maps should be considered estimates and not relied on as legal documents or descriptions.*