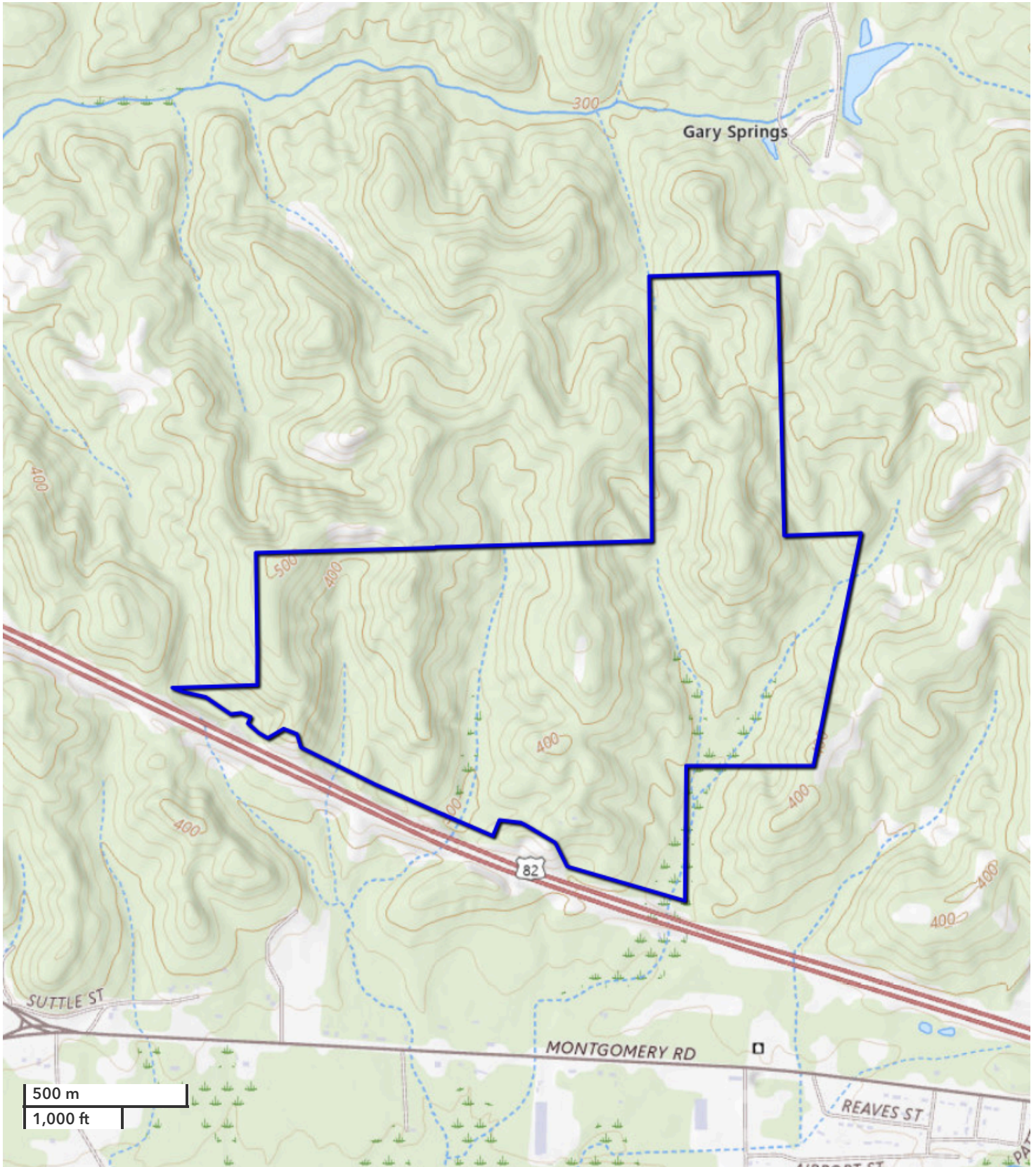




GABE GOODSON  
Land Professional  
ggoodson@nationalland.com  
Mobile: 205-365-8388  
Office: 205-548-1202  
Fax: 864-331-1610

JONATHAN BERRYHILL  
Land Broker  
jberrhill@nationalland.com  
Mobile: 256-874-7354  
Office: 256-408-5130  
Fax: 864-331-1610

Centreville Recreation & Investment Tract  
Bibb County, AL  
425 +/- Acres



*All boundary lines noted in pictures, aerials or maps should be considered estimates and not relied on as legal documents or descriptions.*