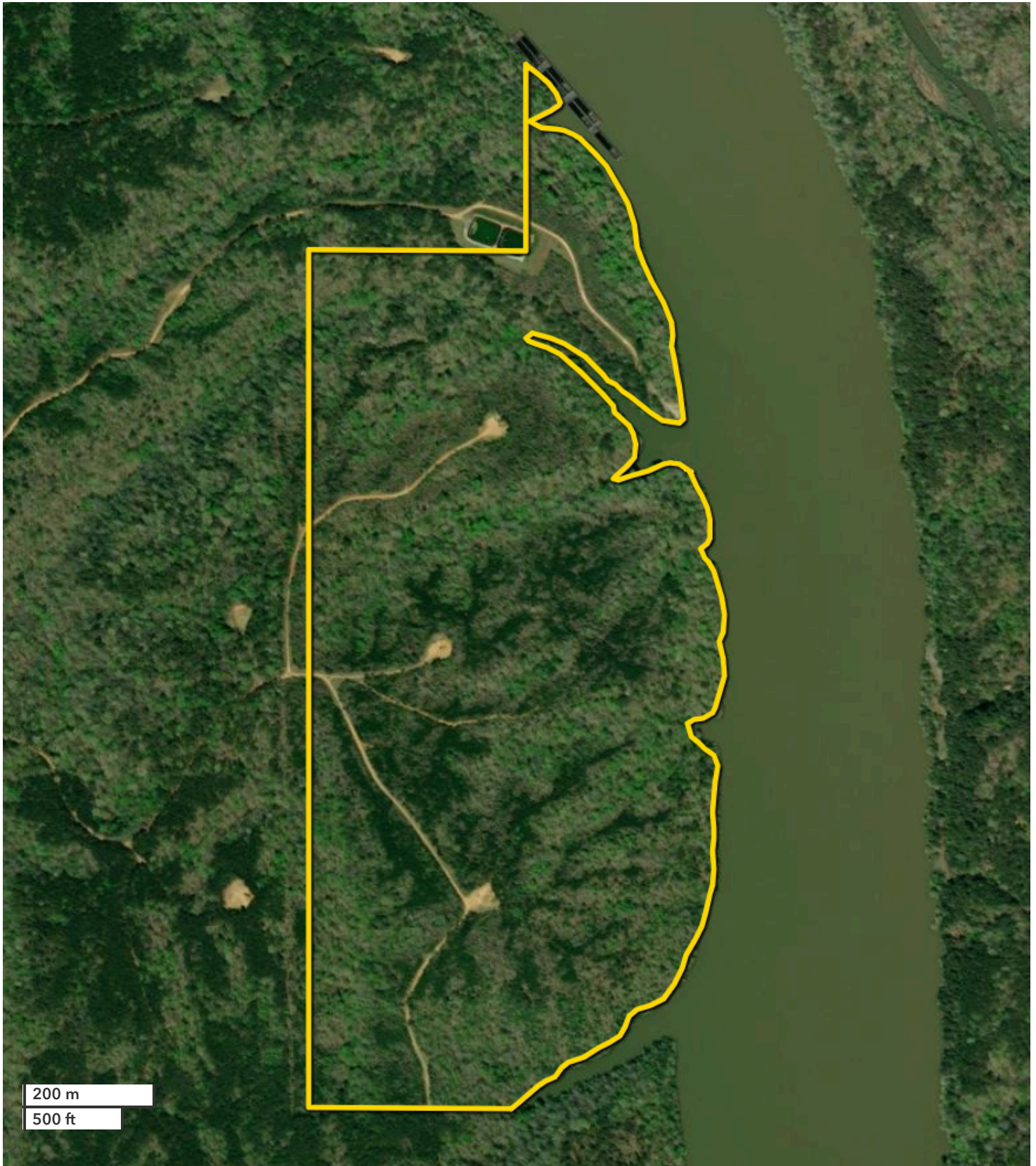




JOSH HIXON
Land Professional
jhixon@nationalland.com
Mobile: 205-361-0946
Office: 205-557-8272
Fax: 864-331-1610

BOB JAMISON
Partner
bjamison@nationalland.com
Mobile: 205-454-2239
Office: 205-859-2373
Fax: 205-343-2144

Warrior River Timber & Recreational Tract
Tuscaloosa County, AL
184 +/- Acres



200 m
500 ft

All boundary lines noted in pictures, aerials or maps should be considered estimates and not relied on as legal documents or descriptions.